

House Six-bedroom (7+kk)

Sold

250 m², Prague 4, Kunratice, Nad Šeberákem



House Six-bedroom (7+kk)

Sold250 m², Prague 4, Kunratice, Nad Šeberákem

Plot	925 m ²
Foot print	154 m ²
Garden	771 m ²
Parking	Garage for 1 car
Garage	Yes
Cellar	-
PENB	D
Reference number	22199

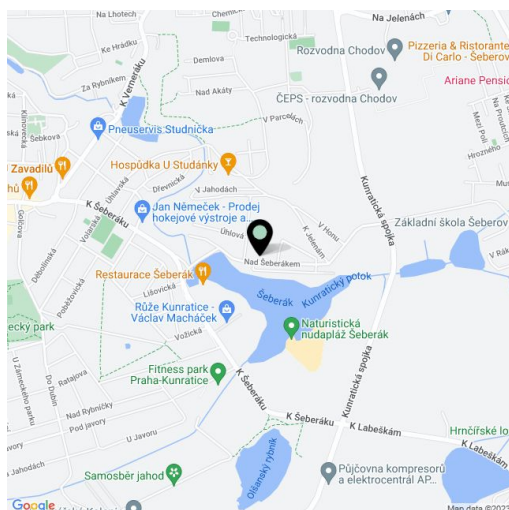
Family house with a garage, large garden and view of Šeberák pond, located on the outskirts of the residential area near the Kunratický les forest in Kunratice, Prague 4. Complete amenities within easy reach, bus stop with direct connections (8 minutes) to the Chodov metro station.

The ground floor is wheelchair accessible. It consists of an entrance hall with direct access to the one-car garage, a bedroom with en-suite bathroom, separate toilet, and a living room with kitchen and dining area. The 1st floor features 3 bedrooms, a study, 2 bathrooms, and a walk-in wardrobe. The attic is used as a storage space.

Facilities include large format tiles, floating floors (poured concrete underneath), wooden French windows, **wooden doors with concealed hinges**, underfloor heating, **central vacuum cleaner**, Hansgrohe and Villeroy & Boch bathroom fixtures, suspended ceilings with LED lighting, built-in wardrobes, a fireplace with both outdoor and internal chimney, Junkers gas boiler, alarm, remote controlled garage doors and gate. Kitchen is suitable for exchange.

In Kunratice you can find a kindergarten and elementary school, swimming pool, squash hall, tennis courts, supermarket and other services. There is also a Baroque chateau, Baroque church and ruins of a Gothic castle where King Wenceslas IV died. Good connections to the center of Prague by car or by public transport.

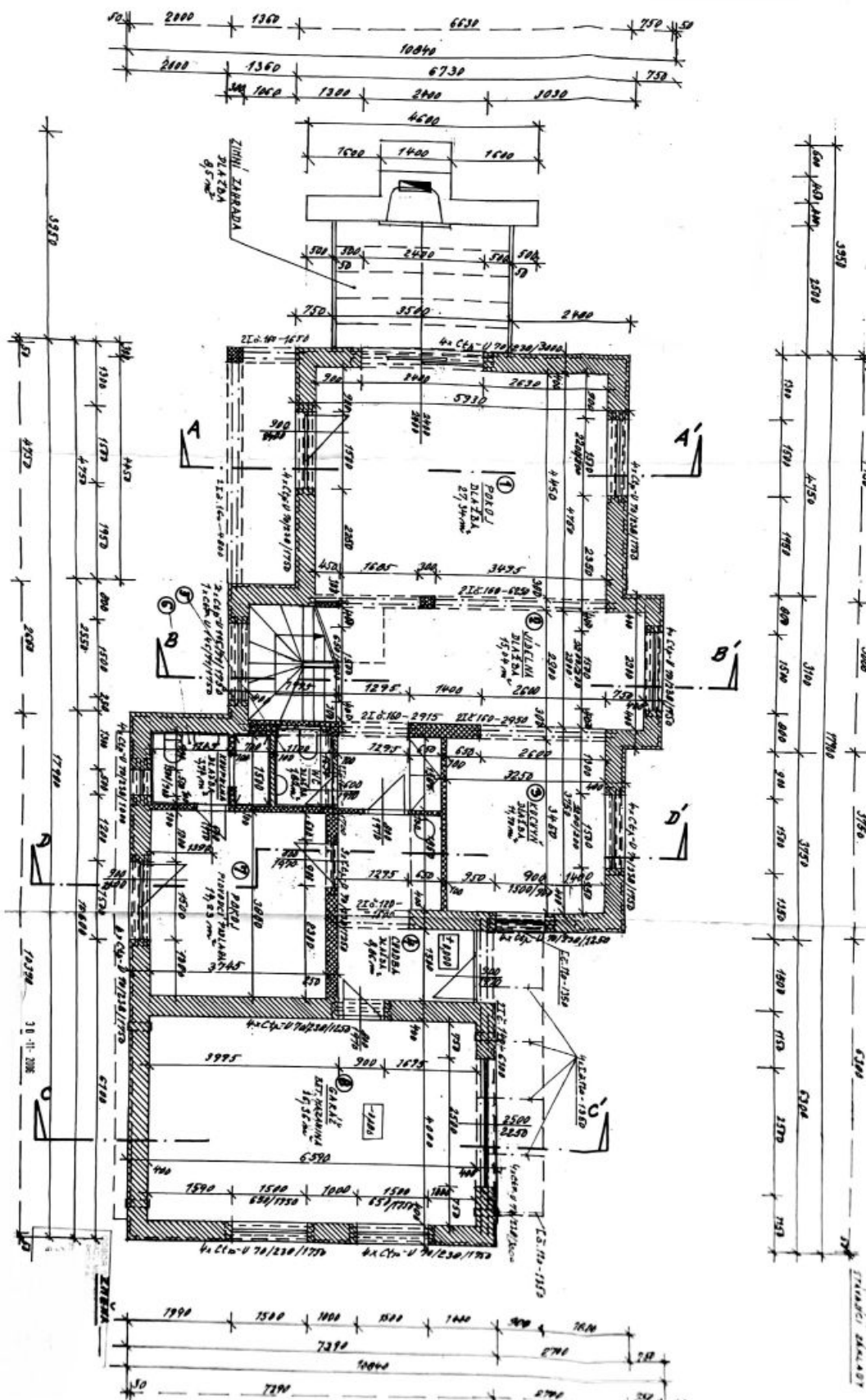
Interior 250 m² built-up area 154 m², garden 771 m², plot 925 m².



House Six-bedroom (7+kk)

Sold

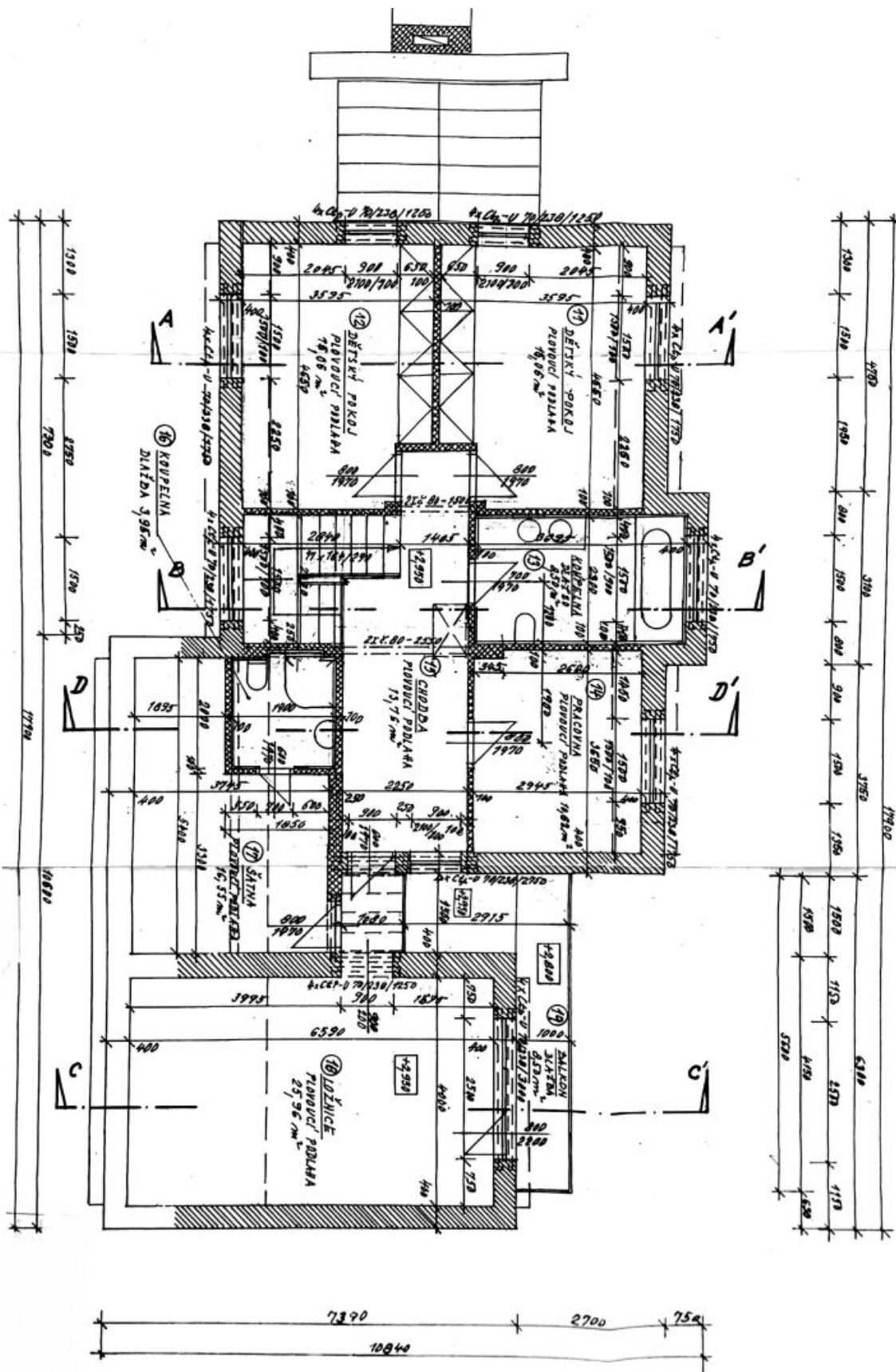
250 m², Prague 4, Kunratice, Nad Šeberákem



House Six-bedroom (7+kk)

Sold

250 m², Prague 4, Kunratice, Nad Šeberákem



House Six-bedroom (7+kk)

Sold

250 m², Prague 4, Kunratice, Nad Šeberákem

