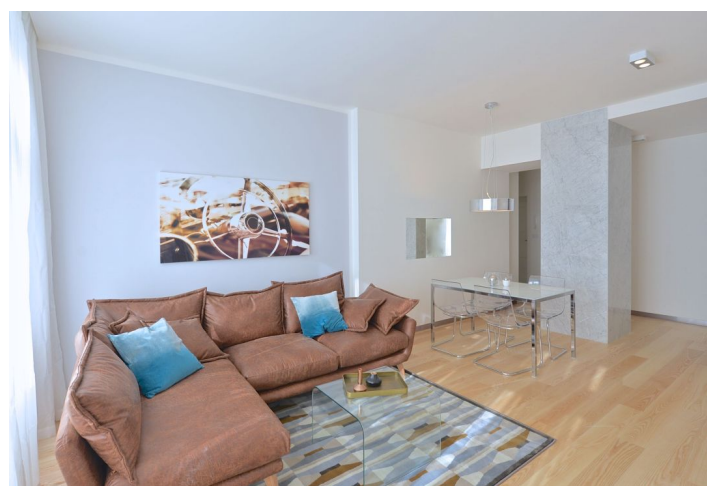
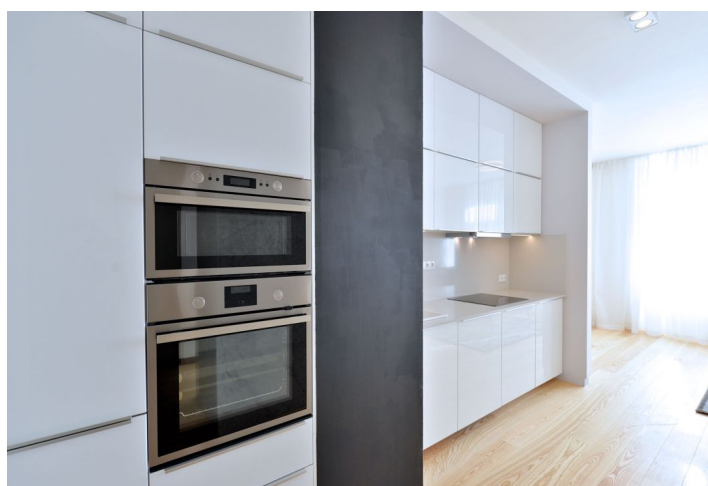
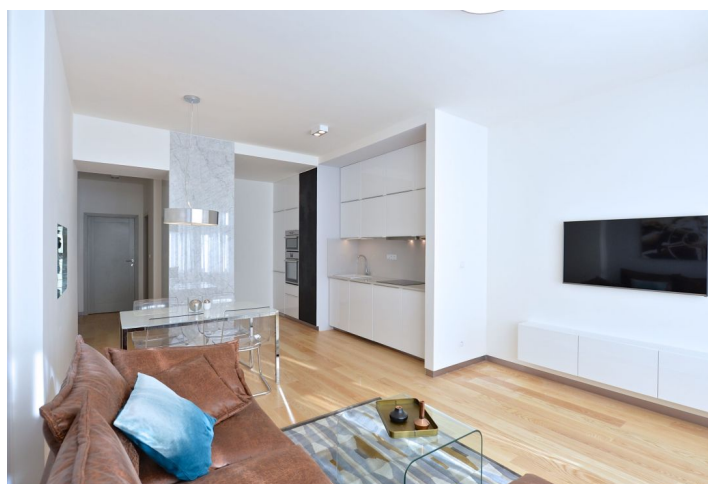


## Apartment One-bedroom (2+kk)

Rented

55 m<sup>2</sup>, Prague 5, Smíchov, Na Václavce



# Apartment One-bedroom (2+kk)

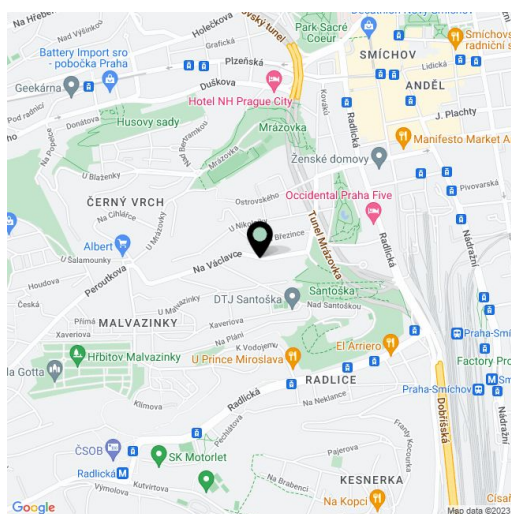
**Rented**55 m<sup>2</sup>, Prague 5, Smíchov, Na Václavce

Total area	55 m <sup>2</sup>
Parking	-
Cellar	-
PENB	G
Reference number	22013
Available from	Immediately

Completely renovated 1-bedroom apartment designed by an architect and furnished with stylish furniture, situated on the first floor of a residential building without an elevator. Located on a quiet street in close vicinity of Santoška Park, quick access to the Anděl commercial zone and metro station, as well as to the German and French Schools.

The interior features a sunny living room with a fully integrated modern kitchen, one bedroom facing the quiet courtyard, a bathroom (bathtub with a shower screen, sink, toilet), and an entry hall.

High quality materials and finishes, built-in wardrobes and storage, wooden floors, marble floors and tiles, security entry door, central heating, electric boiler for hot water, a washer, a dishwasher, a microwave oven, a TV, UPC cable for the TV and the Internet, and an audio entry phone. Parking is outside on the street. Common building charges and utilities CZK 2,500 per month. Electricity is billed separately.



\* Area of the unit according to the Civil Code. The area consists of the sum total area of the entire unit bounded by perimeter walls.