



Apartment Two-bedroom (3+kk)

Rented

240 m², Prague 9, Libeň, Ocelářská





Apartment Two-bedroom (3+kk)

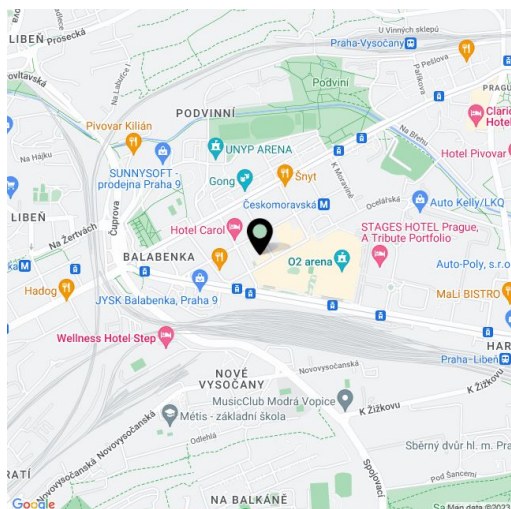
Rented240 m², Prague 9, Libeň, Ocelářská

Total area	355 m ²
Floor area*	240 m ²
Terrace	115 m ²
Parking	Garage parking.
Garage	Yes
Cellar	-
PENB	G
Reference number	22003
Available from	Immediately

New 2-bedroom 3-bathroom split-level penthouse apartment boasting a 104 m² terrace (providing amazing views), two enclosed balconies, a jacuzzi and sauna. The apartment, which is completely furnished with design furniture, is situated on the 8th and 9th floors of the newly built Sedmíráska (Daisy) Residence that offers a gated courtyard garden and underground parking. Located in a Prague 9 neighborhood, just a few blocks from the Českomoravská metro station (line B), the Sazka Arena multipurpose venue, and the Galerie Harfa shopping mall.

The lower level features a huge living room with a fireplace and access to the terrace, a fully fitted open kitchen and dining area with access to an enclosed balcony, a glassed in relaxation / fitness room with jacuzzi, sauna and shower, two guest toilets, and entry hall. The upper level includes two separate bedrooms, both with access to the second enclosed balcony, a master bedroom also with a fitted walk-in closet and en-suite bathroom (shower, toilet), family bathroom (bathtub, toilet), and hall with built-in storage.

Wooden floors, security entry door, automatic outdoor blinds, French windows, built-in wardrobes, video entry phone, washer, dryer, quality kitchen appliances incl. a wine fridge. Two or three garage parking spaces available. Common building charges and deposit for utilities CZK 14 217 per month.



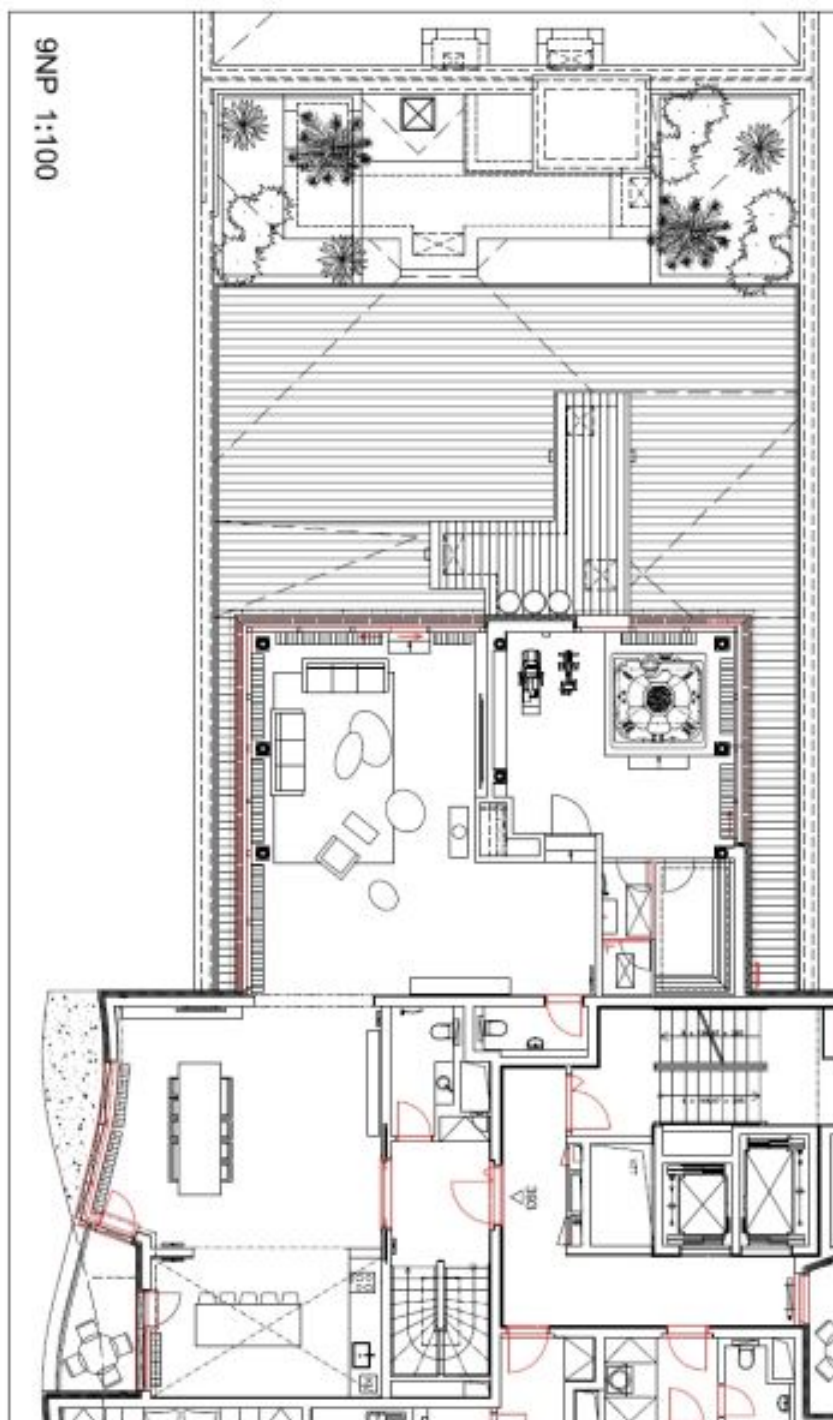
* Area of the unit according to the Civil Code. The area consists of the sum total area of the entire unit bounded by perimeter walls.



Apartment Two-bedroom (3+kk)

240 m², Prague 9, Libeň, Ocelářská

Rented





Apartment Two-bedroom (3+kk)

240 m², Prague 9, Libeň, Ocelářská

Rented

