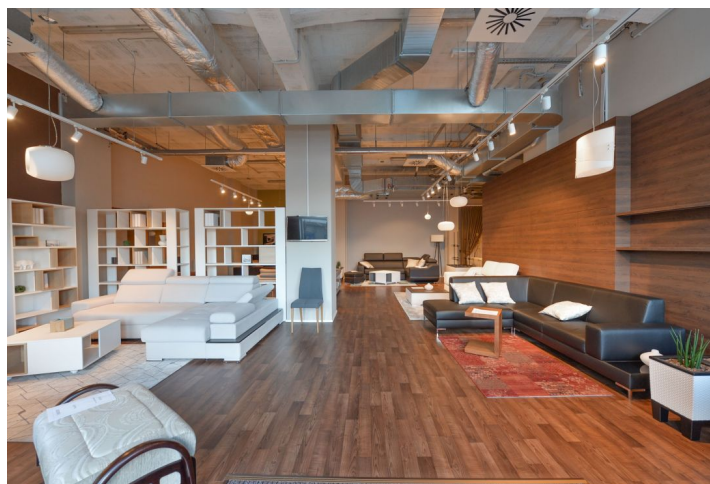


Retail space

Rented

Prague 4, Nusle, Bartoškova



## Retail space

Rented

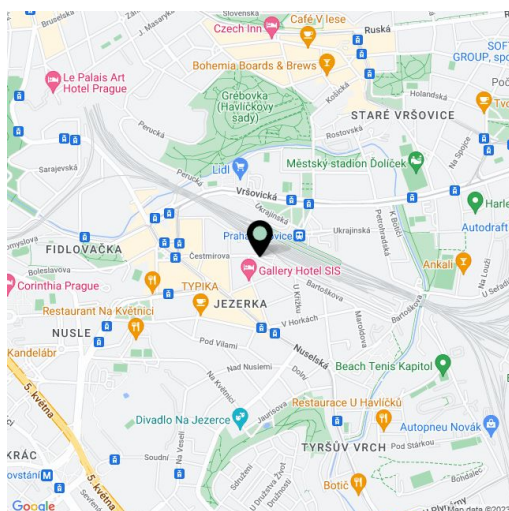
Prague 4, Nusle, Bartoškova

Service price	50 CZK monthly per m <sup>2</sup>
Available area	182 m <sup>2</sup>
Parking	Yes
PENB	C
Reference number	21966

Commercial premises for lease in a newly renovated building situated in Prague 4 - Nusle. Premises are situated on the ground floor of the residential building; established showrooms are nearby and there is also a bathroom studio opposite the building.

The premises are suitable for retail/office space or showroom. Spaces are bright with high windows facing the street and have a ventilation system. 1 parking place in the underground garage. Good transport accessibility – bus and tram stops within walking distance from the building.

The rent is 65 000 CZK/month. Lessee pays no commission.



Retail space

Rented

Prague 4, Nusle, Bartoškova

