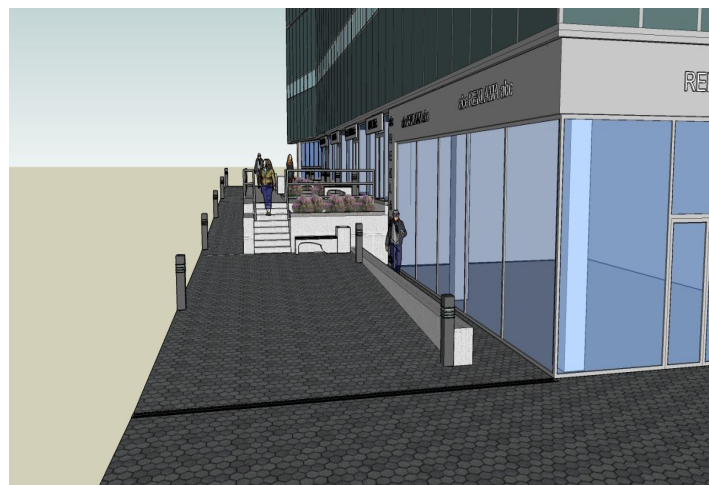
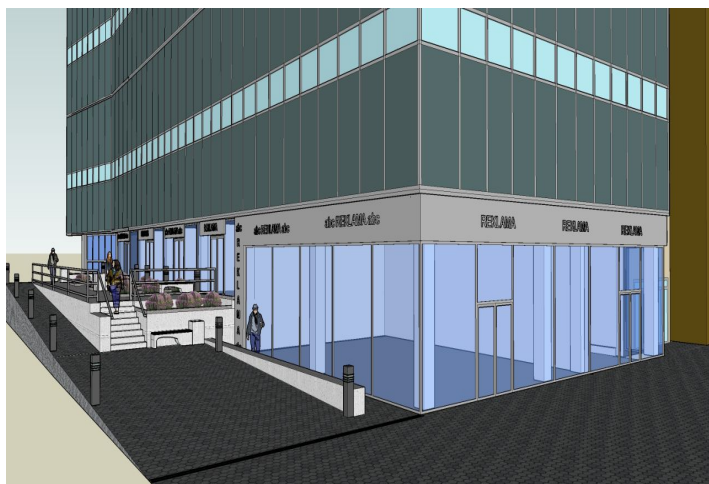


## Retail space

Rented

Prague 10, Vršovice, Kubánské náměstí



## Retail space

Rented

Prague 10, Vršovice, Kubánské náměstí

Service price	174 CZK monthly per m <sup>2</sup>
Available area	118 m <sup>2</sup>
Parking	EUR 90 / ps / month
PENB	D
Reference number	21878

Retail premises on the ground floor of a seven-story administrative building, with excellent parking opportunity, located on Prague 10.

**Location:**

Good accessibility by car and public transportation – in close vicinity of tram stations, within walking distance (ca. 10 minutes) of the Strašnická metro station (line A), good connection to the southern arterial road (Jižní spojka), D1 and D11 motorways.

**Features and Services:**

- Access card entry system
- Copy centrum
- Canteen
- Air-conditioned offices
- Openable windows
- Parking for visitors
- Carwash

Rental and service charges listed without VAT. Lessee pays no commission.

