

Farmhouse estate Five-bedroom (6+kk)

Sold

Kladno, Kamenné Žehrovice, Na Spáleništi

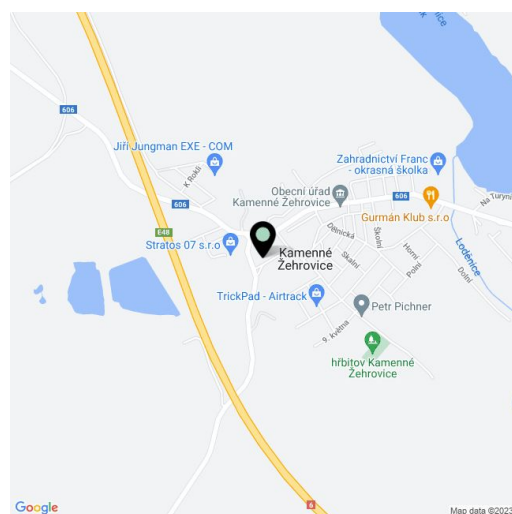


Farmhouse estate Five-bedroom (6+kk)

Sold

Kladno, Kamenné Žehrovice, Na Spáleníšti

Total area	550 m ²
Foot print	2 142 m ²
Plot	3 537 m ²
Parking	Garage for 3 cars, additional parking on the plot
PENB	E
Reference number	21684



Completely renovated large homestead with fireplace, summer kitchen and a carefully landscaped garden, situated opposite a park in the residential area of Kamenné Žehrovice, just a 25-minute drive via the R6 expressway from the metro station and shopping center in Zličín.

The homestead consists of the main building with basement, guest house connected to the workshop and garage for three cars, and a large barn. The ground floor of the main building consists of a generous living room with **glazed fireplace**, dining area, kitchen and pantry; there is also a bedroom, study, bathroom with bathtub, shower and toilet, hall and storage room. From the living room and the bedroom you can enter the covered patio connected to the **summer kitchen with brick barbecue**. On the first floor you can find a spacious living room with a kitchen, built-in mezzanine and two balconies, a bedroom and a bathroom (walk through to the attic). The guest house consists of a lounge with a kitchen and separate toilet; the attic consists of an open space suitable for dividing into several bedrooms. There is a garage for 3 cars, workshop and storage space for garden tools and furniture. The barn is currently used as a sports hall with golf simulator.

Amenities include **solid wood floors and windows**, large format tiles, 3x fully equipped kitchen, **massage shower**, a large amount of storage space, exposed ceiling beams. The purchase price includes custom made furniture.

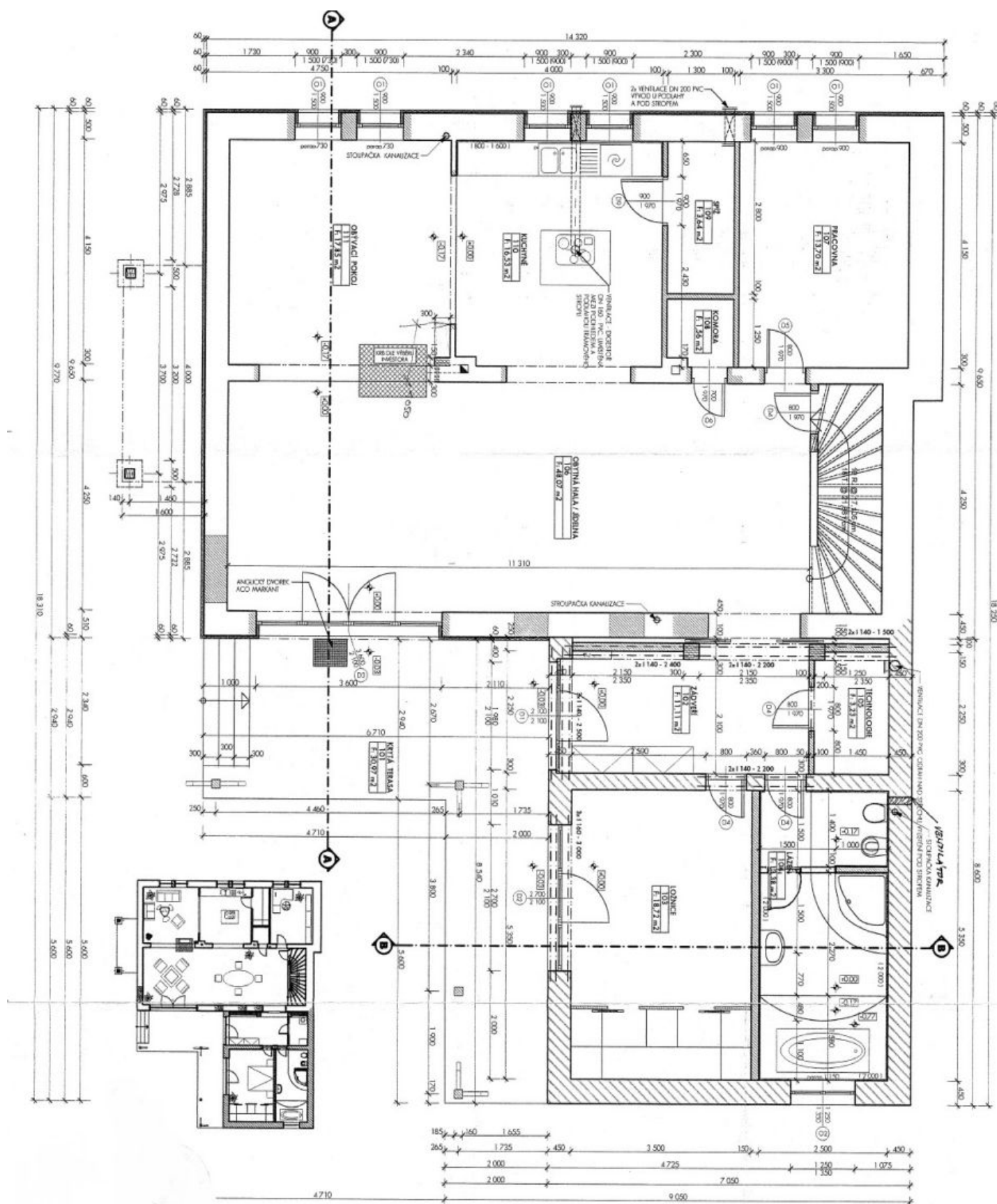
Quiet residential location with basic amenities and good access to Prague. The village has a kindergarten and elementary school, restaurant, shop and children's playground, complete services are available in nearby Kladno, about 10 minutes away by car.

Interior 550 m², footprint 2 142 m², plot 3 537 m².

Farmhouse estate Five-bedroom (6+kk)

Sold

Kladno, Kamenné Žehrovice, Na Spáleništi



Farmhouse estate Five-bedroom (6+kk)

Sold

Kladno, Kamenné Žehrovice, Na Spáleništi

