

House Five-bedroom (6+kk)

Sold

327 m², Prague 5, Slivenec, K Váze



House Five-bedroom (6+kk)

Sold327 m², Prague 5, Slivenec, K Váze

Plot	1 116 m ²
Foot print	173 m ²
Garden	943 m ²
Parking	Garage for 1 car
Garage	Yes
Cellar	-
PENB	G
Reference number	21683

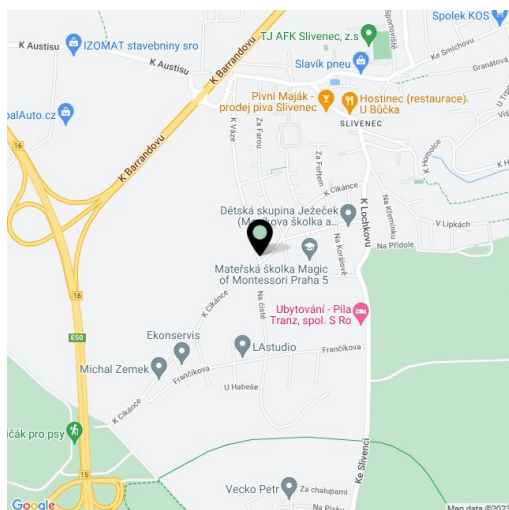
New house with a fireplace and outdoor swimming pool situated on a quiet street on the edge of a residential area in the town of Slivenec, just a 5-minute drive from complete amenities in neighboring Barrandov and just 15 minutes to the city center.

The ground floor consists of a living room with fireplace, kitchen and French doors leading to the garden, study / bedroom, cloakroom, bathroom with shower, sink and toilet, pantry, walkthrough to the garage for one car. The 1st floor consists of 4 bedrooms, bathroom with bathtub, shower, double sink and toilet, and a staircase hall.

Facilities include **hardwood floors**, wooden windows and doors, fully equipped kitchen, central vacuum cleaner, **security system**, underfloor heating provided by a heat pump. In the garden there is a heated RivieraPool swimming pool and a rainwater reservoir with a capacity of 13 m³.

The village has a kindergarten and elementary school, tennis hall, cafe and several restaurants. The bus stop with links to the Na Knížecí bus station in Smíchov is a 5-minute walk from the house.

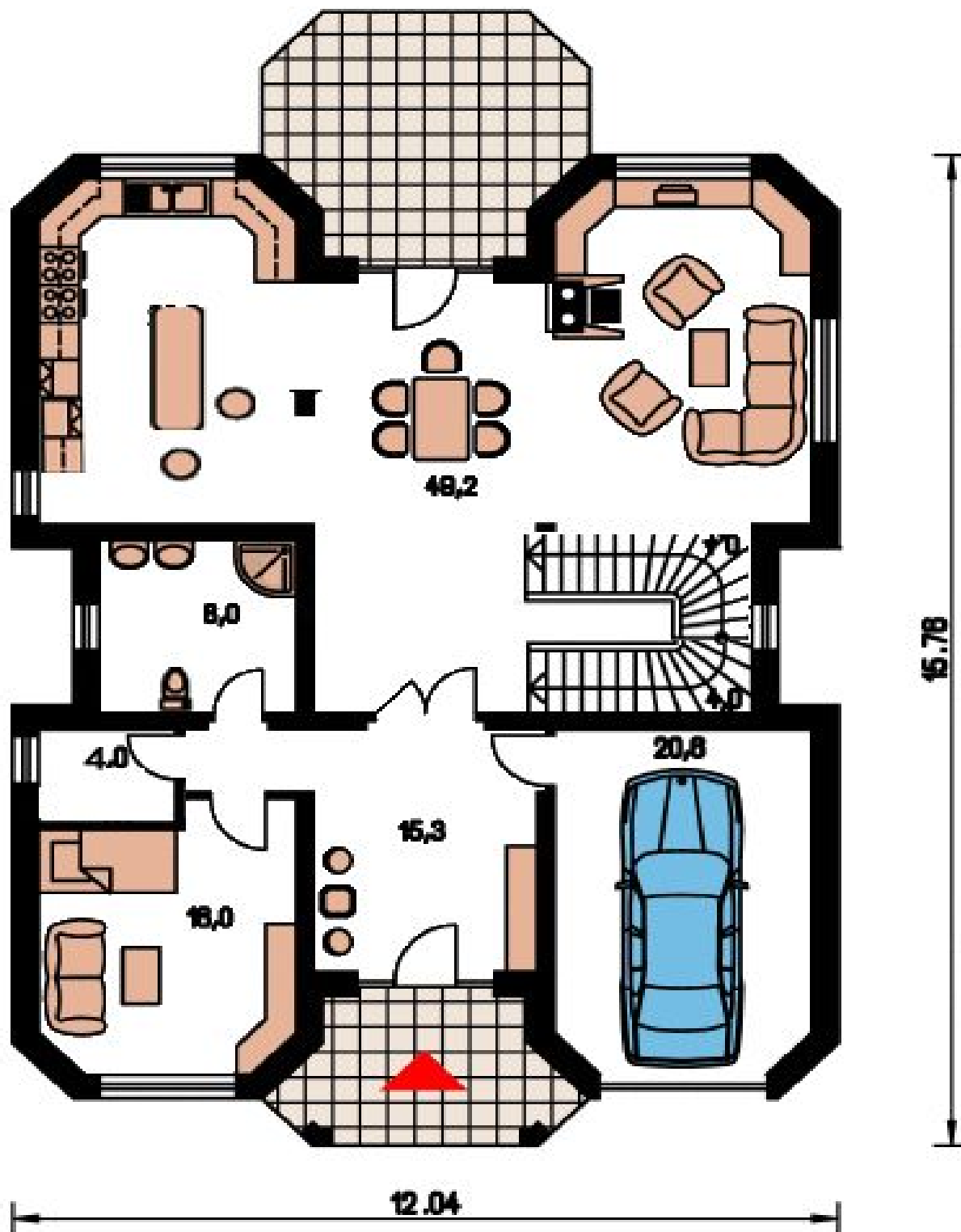
Interior 327.3 m², built-up area of 172.8 m², garden 943 m², plot 1 1116 m².



House Five-bedroom (6+kk)

327 m², Prague 5, Slivenec, K Váze

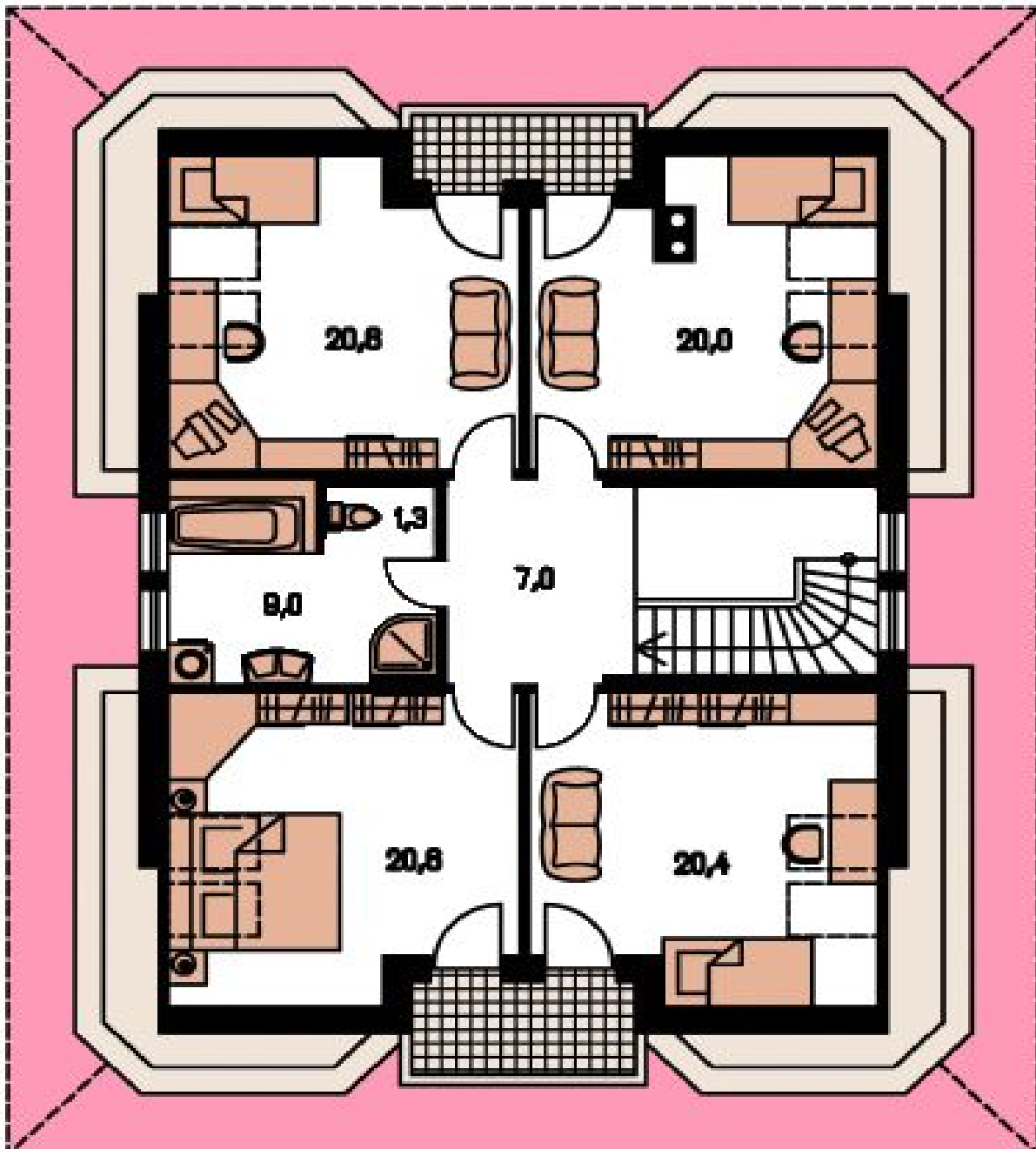
Sold



House Five-bedroom (6+kk)

Sold

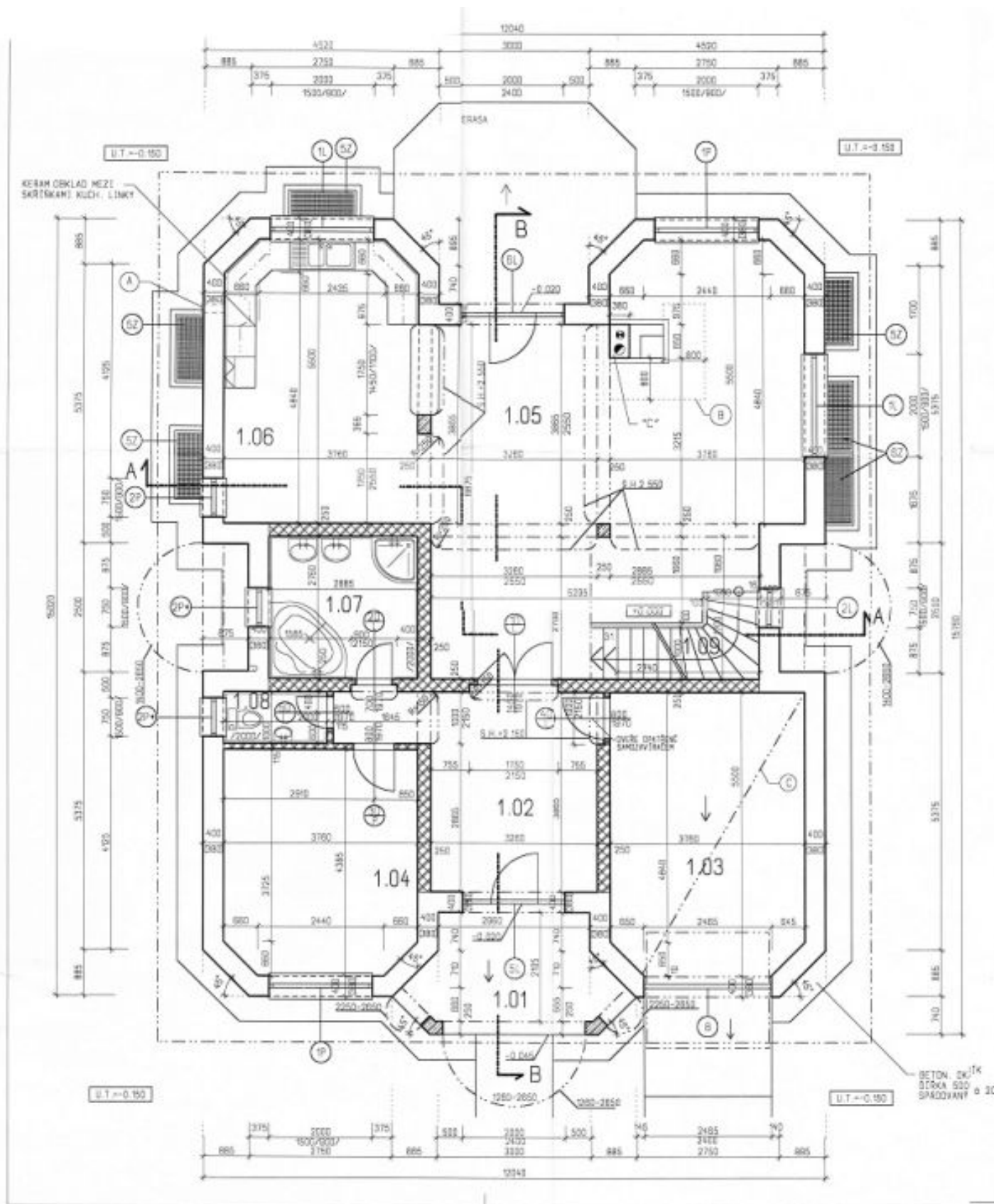
327 m², Prague 5, Slivenec, K Váze



House Five-bedroom (6+kk)

Sold

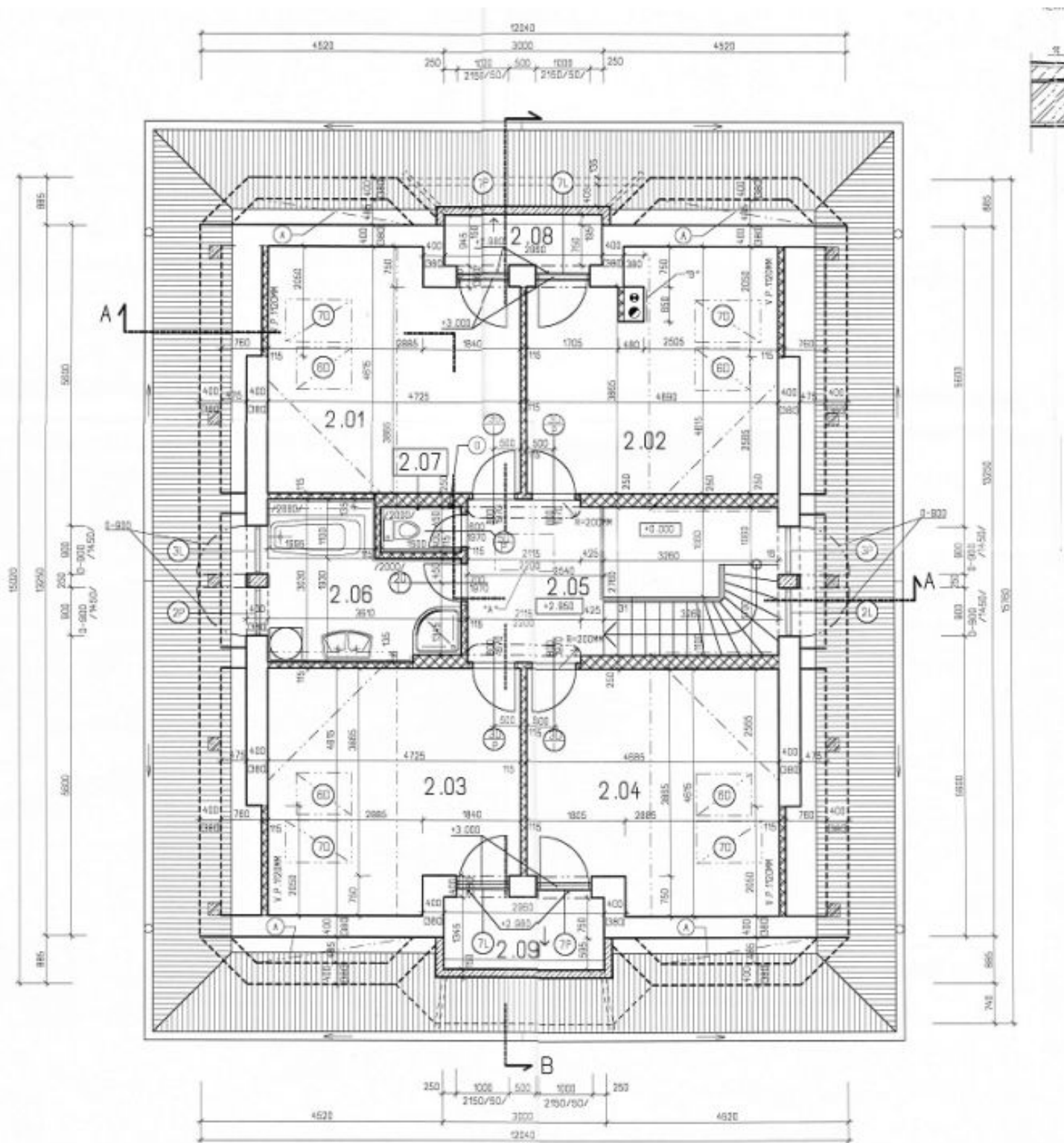
327 m², Prague 5, Slivenec, K Váze



House Five-bedroom (6+kk)

Sold

327 m², Prague 5, Slivenec, K Váze



House Five-bedroom (6+kk)

Sold

327 m², Prague 5, Slivenec, K Váze

