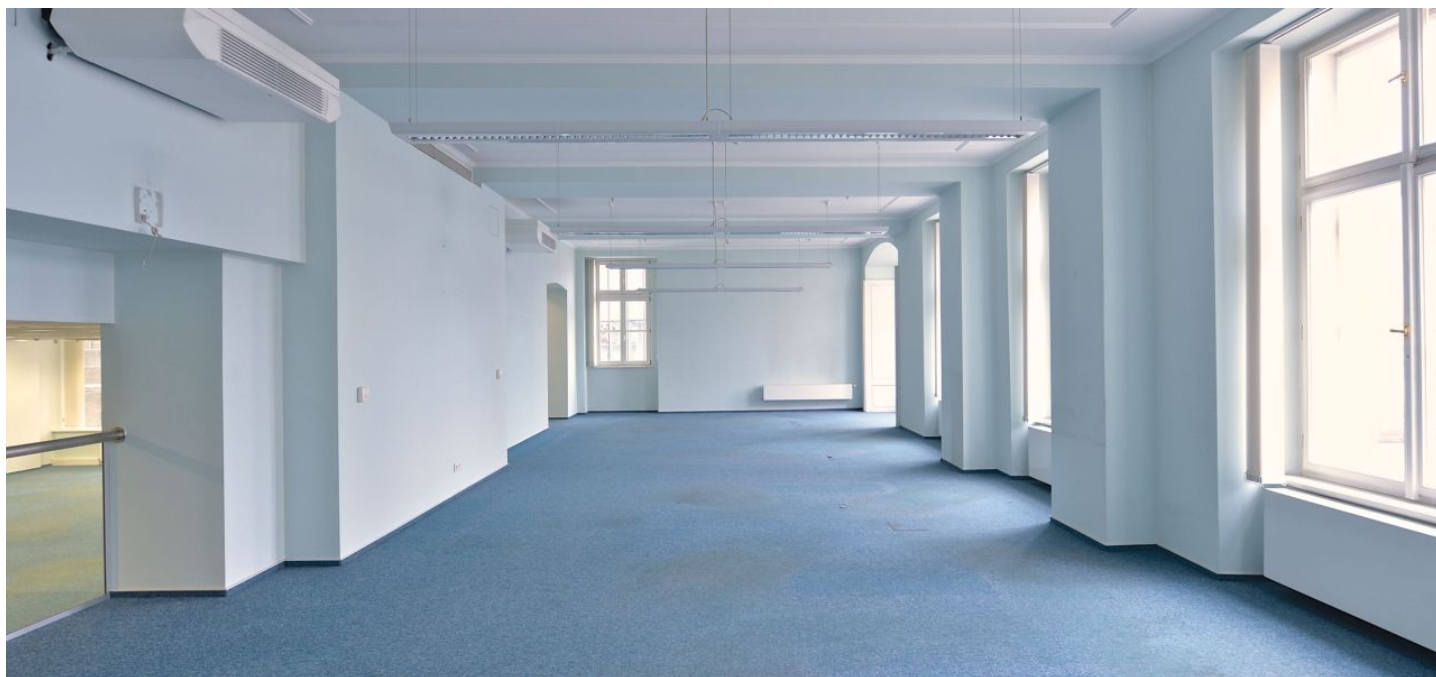


Office space

Rented

Prague 1, Staré Město, V Celnici



Office space

Rented

Prague 1, Staré Město, V Celnici

Service price	155 CZK monthly per m ²
Available area	800 m ²
Cellar	-
Parking	CZK 5 500 / ps / month
PENB	C
Reference number	21612

Office space for lease on the mezzanine in administrative building in the center of Prague with excellent access by car and public transport. Building also offers underground parking with more than 400 parking spaces.

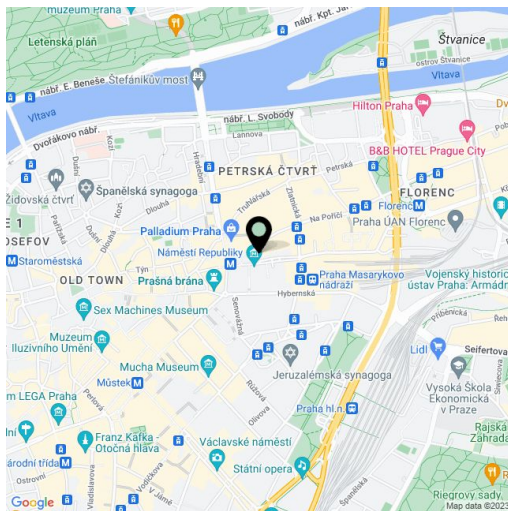
Location:

Outstanding accessibility by car and public transportation - close to Náměstí Republiky metro station (line B), important tram hub and Masaryk train station and close to city highway with direct connection to D1 highway.

Features and Services:

Lowered ceilings with built-in lighting
 Double floors
 Carpet
 Air conditioning
 Heating with backup power supply
 Kitchenette
 Toilets
 24/7 security
 Representative reception
 Chip card access

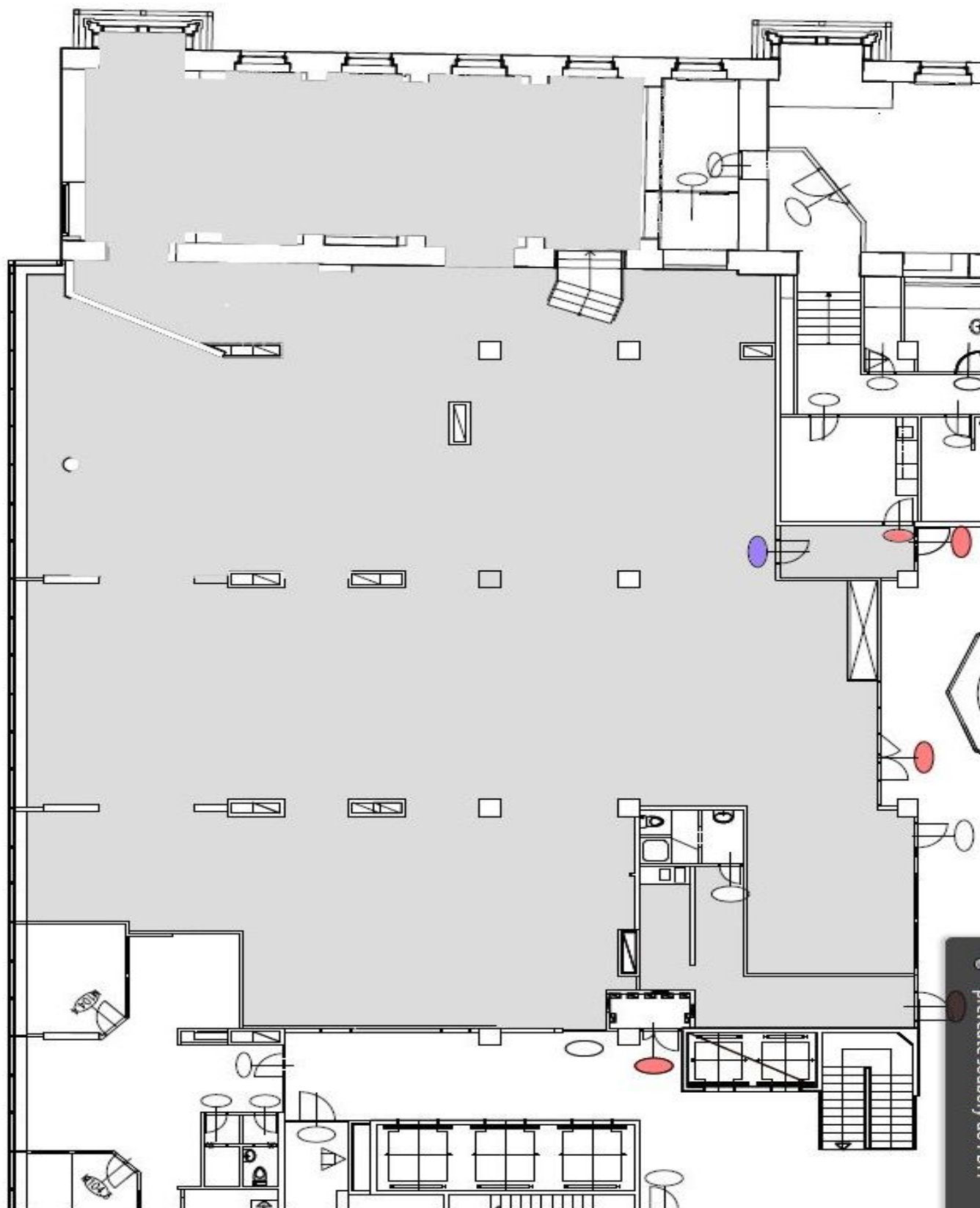
Rental and service charges listed without VAT. Lessee pays no commission.



Office space

Rented

Prague 1, Staré Město, V Celnici



Klikněte na Nástroje a
převeďte soubory do PDF.