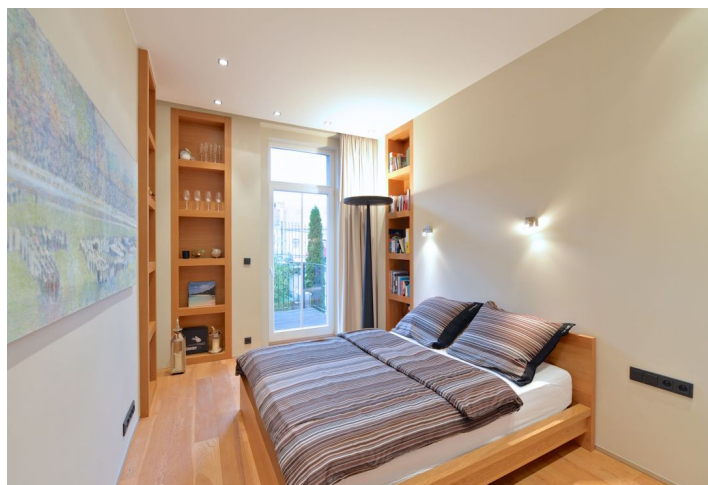


Apartment One-bedroom (2+kk)

Rented

68 m², Prague 3, Žižkov, Řehořova



Apartment One-bedroom (2+kk)

Rented

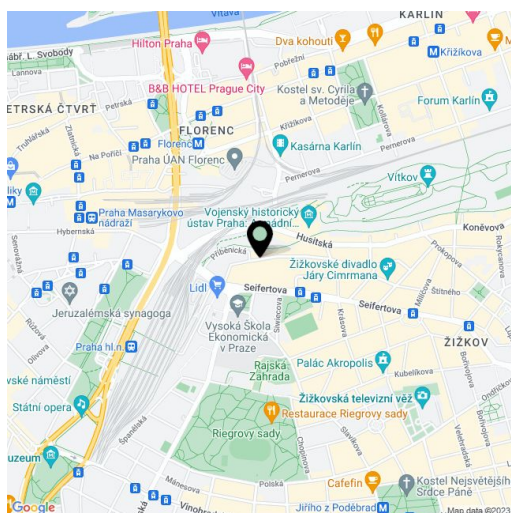
68 m², Prague 3, Žižkov, Řehořova

| | |
|------------------|--|
| Total area | 74 m ² |
| Floor area* | 68 m ² |
| Terrace | 6 m ² |
| Parking | Garage parking available 200 m from the building at CZK 1600-1900/month. |
| Garage | Yes |
| Cellar | - |
| PENB | G |
| Reference number | 21557 |
| Available from | Immediately |

Architect designed and tastefully furnished 1-bedroom flat with a terrace, in a completely reconstructed classic building with a lift. Conveniently located a short walk from the city center (one tram stop from Hlavní nádraží metro station), and close to the Vítkov and Parukářka parks. Two minute walk from tram stops, just a five minute tram ride to the city center, Riegrovy sady Park within walking distance. Design by the renowned Donlić studio.

With quality materials and finishes, the flat features a fully fitted open plan kitchen with integrated appliances and lots of storage space, living room, one bedroom with built-in wardrobes and shelves plus access to the terrace facing the back yard, shower bathroom with bidet and toilet, a fitted walk-in closet, and entry hall.

Custom made furniture, high ceilings, wooden floors, security entry door, recessed lighting, washer, dryer, TV, alarm that can be connected to a security agency, audio entry phone, camera system in the building. Garage parking available 200 m from the building at CZK 1600-1900/month. Common building charges and deposit for utilities CZK 3600 per month.



* Area of the unit according to the Civil Code. The area consists of the sum total area of the entire unit bounded by perimeter walls.

Apartment One-bedroom (2+kk)

Rented

68 m², Prague 3, Žižkov, Řehořova

