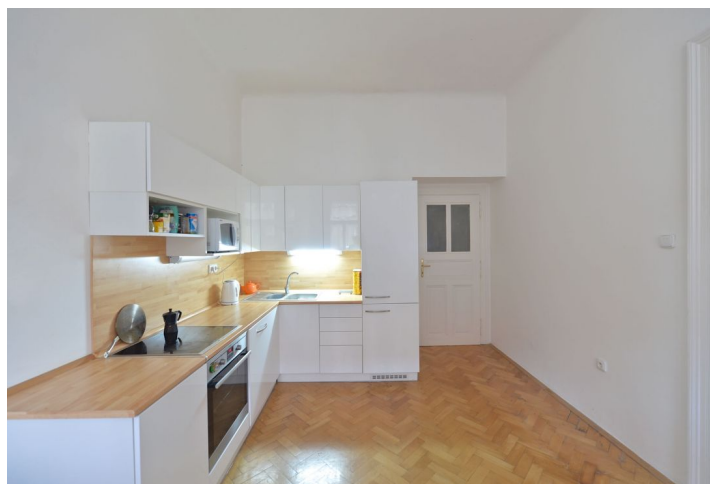


Apartment Two-bedroom (3+1)

Rented

97 m², Prague 7, Bubeneč, Šmeralova



Apartment Two-bedroom (3+1)

Rented

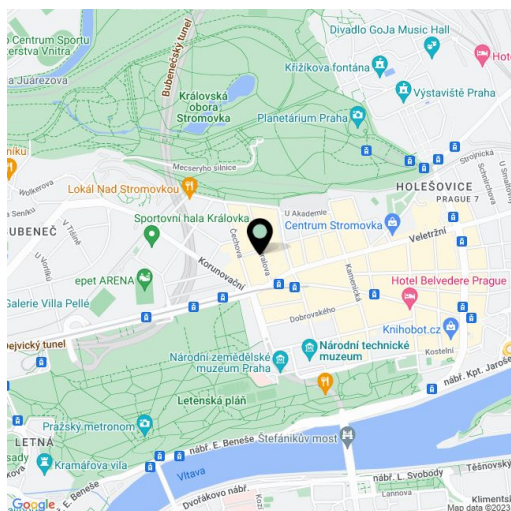
97 m², Prague 7, Bubeneč, Šmeralova

Total area	97 m ²
Parking	-
Cellar	-
PENB	G
Reference number	21500
Available from	Immediately

Reconstructed unfurnished 2-bedroom flat with preserved original details, on the third floor of a renovated building with no lift. Located in a quiet street steps from Stromovka Park, the largest park in Prague, a 15 minute walk to the city center through another popular Prague park - Letná, and not far from the Prague Castle. Full amenities within easy reach, tram connections (tram stop one minute from the building), convenient to Hradčanská (line A) and Vltavská (line C) metro stations.

The flat includes two separate bedrooms (one with a walk-in closet) facing the quiet courtyard, living room, a fully fitted eat-in kitchen, shower bathroom, a separate toilet, and a large central entry hall.

High ceilings, solid wood parquet floors, laminated floors, tiles, security entry door, double interior doors, gas boiler, dishwasher, induction cooktop, UPC cable, audio entry phone. Common building charges CZK 600/person/month. Utilities are billed separately. UNFURNISHED.



* Area of the unit according to the Civil Code. The area consists of the sum total area of the entire unit bounded by perimeter walls.