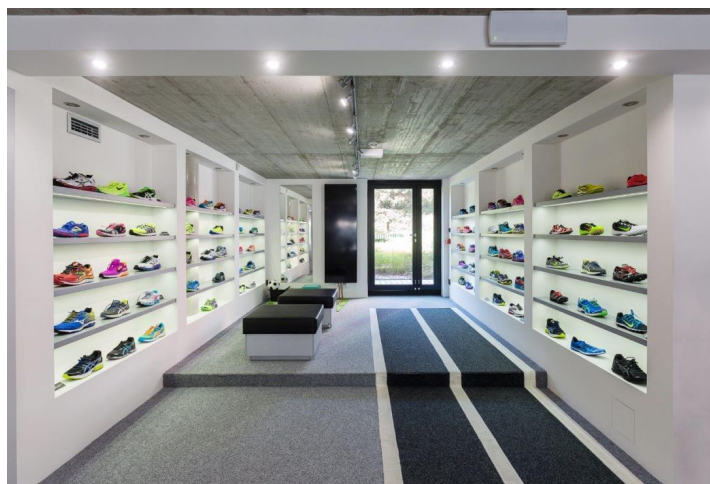


Retail space

Rented

Prague 4, Michle, Michelská

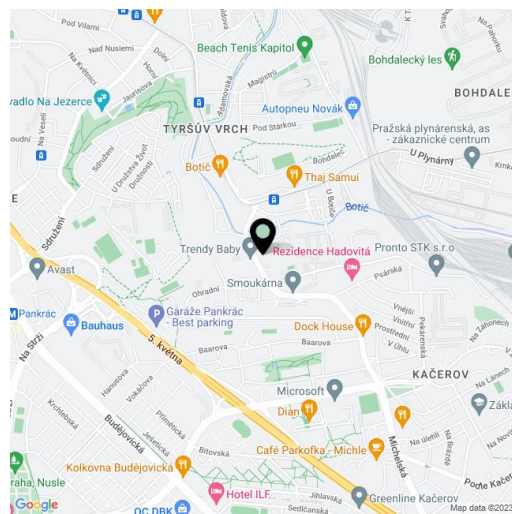


Retail space

Rented

Prague 4, Michle, Michelská

Service price	100 CZK monthly per m ²
Available area	162 m ²
Parking	EUR 100 / ps / month
PENB	B
Reference number	21360



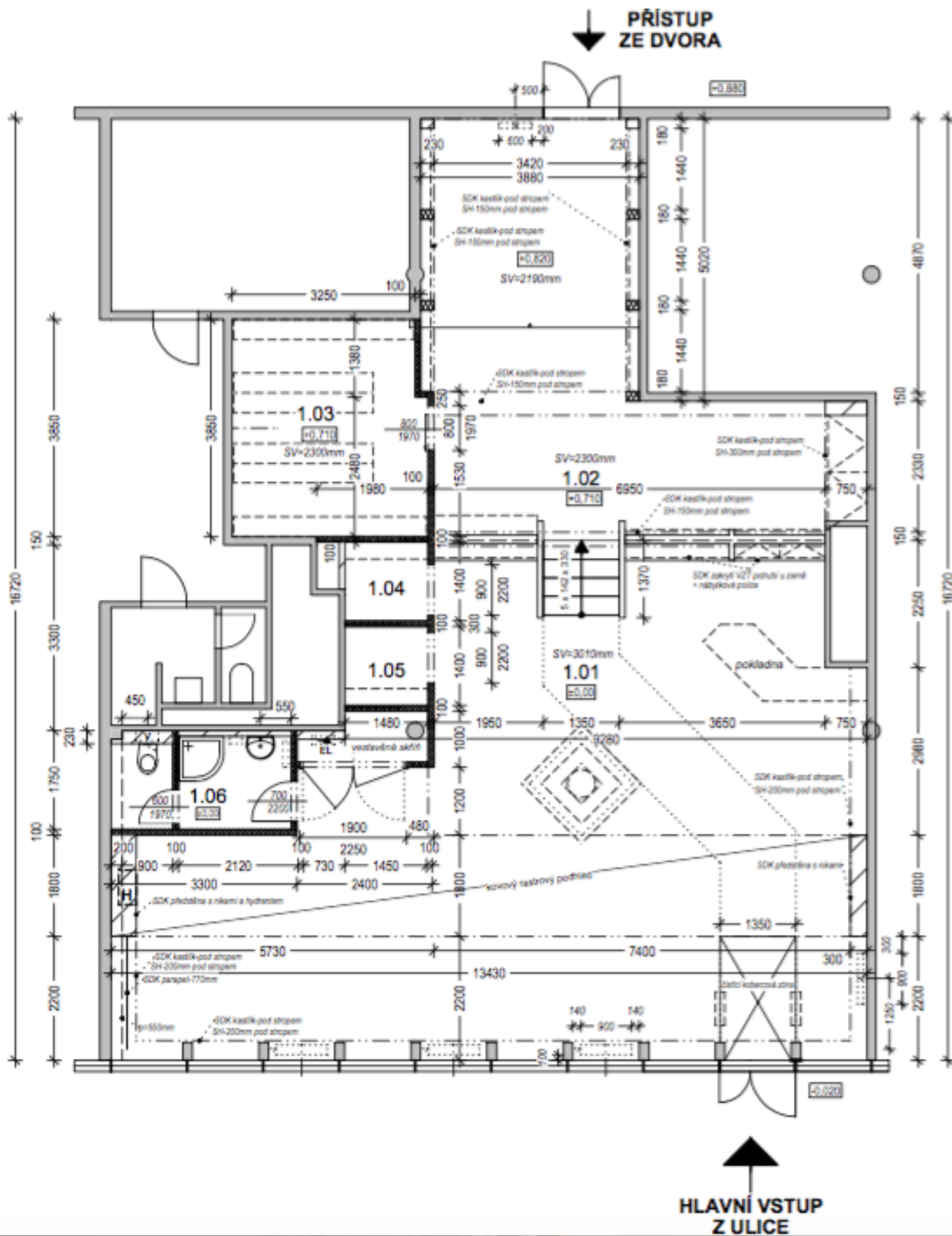
Retail premises for lease on the ground floor of an administrative building situated in Prague 4. The building offers more than 5 500 m² of office space and 1 000 m² of retail space and is part of the BB Centrum administrative complex. The premises were used as a sports store and are suitable for the operation of a shop or showroom.

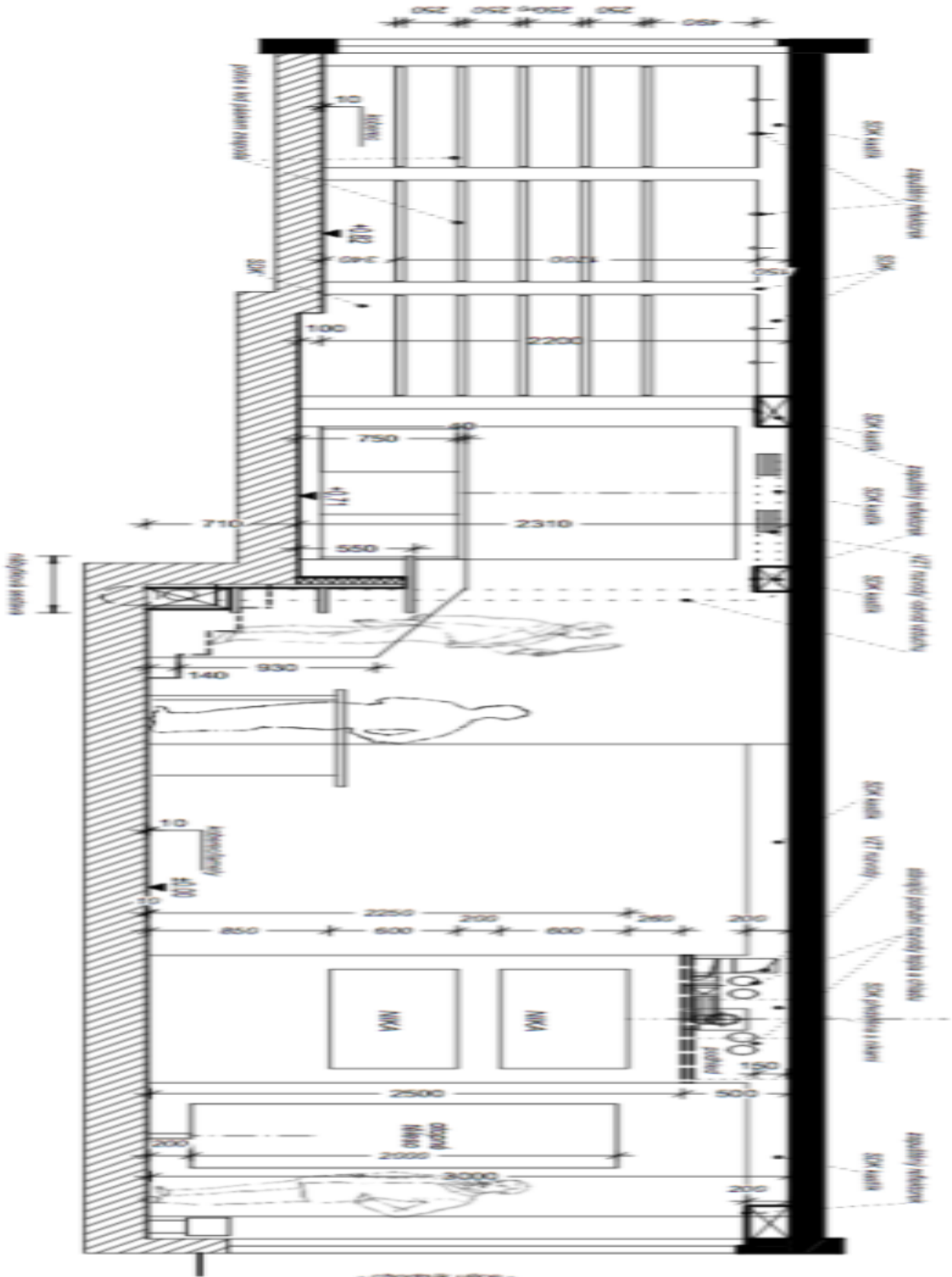
Location:

Very good accessibility by car and public transport – Budějovická and Kačerov metro stations (line C) are just 2 minutes by bus or 8 minutes on foot. A shuttle bus connects the building with the metro stations. Easy access to Prague's city ring and to the D1 highway leading to Brno.

Parking is available in the underground garages.

Rental and service charges listed without VAT. Lessee pays no commission.





Retail space

Rented

Prague 4, Michle, Michelská

