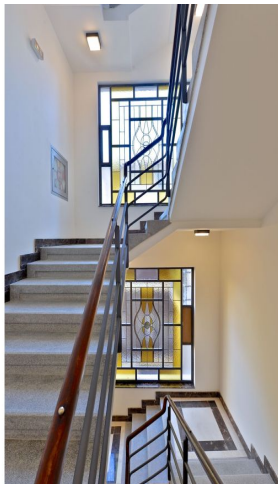




## Apartment One-bedroom (2+kk)

Sold

62 m<sup>2</sup>, Prague 1, Nové Město, Příčná





## Apartment One-bedroom (2+kk)

**Sold**62 m<sup>2</sup>, Prague 1, Nové Město, Příčná

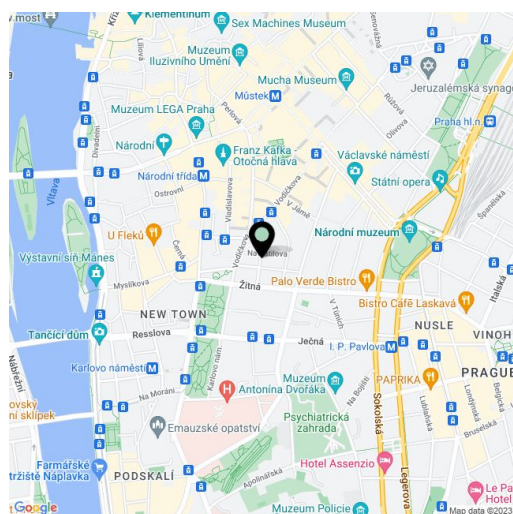
Total area	62 m <sup>2</sup>
Parking	605 000
Garage	Yes
Cellar	-
PENB	G
Reference number	21327

New 1-bedroom apartment on the 4th floor of a completely renovated Functionalist apartment building with a cellar and 11 garage parking spaces. Located in the city center on a quiet street between the Můstek and Karlovo náměstí metro stations. The building was carefully renovated with an emphasis on high quality materials, attention to detail, preserved original features, and the addition of a reception. The project offers a total of 19 apartments of various sizes and layouts.

The apartment consists of a west-facing living room with a kitchen, a bedroom, a bathroom, and a hallway. The apartment is renovated to a **high standard** including materials such as **Italian marble**, oak floors, and high-end sanitary ware.

The apartment is located near the Novoměstská radnice town hall, just a 3-minute walk from the metro and tram stops on Karlovo náměstí square and 7 minutes from the Můstek metro station on Wenceslas Square. The location offers complete urban amenities and plenty of cultural, social, and sports activities.

Interior 61.91 m<sup>2</sup>.



\* Area of the unit according to the Civil Code. The area consists of the sum total area of the entire unit bounded by perimeter walls.



## Apartment One-bedroom (2+kk)

**Sold**62 m<sup>2</sup>, Prague 1, Nové Město, Příčná

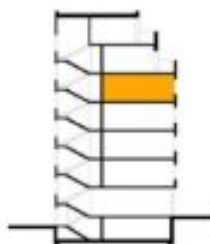
# VITRAGE HOUSE

BYT 5.15 2+KK



### LEGENDA MÍSTNOSTÍ

01	CHODBA	6,10 m <sup>2</sup>
02	OBÝVACÍ POKOJ, KK	32,55 m <sup>2</sup>
03	LOŽNICE	17,85 m <sup>2</sup>
04	KOUPELNA	7,30 m <sup>2</sup>

UŽITNÁ PLOCHA BYTU 63,80 m<sup>2</sup>



## Apartment One-bedroom (2+kk)

Sold

62 m<sup>2</sup>, Prague 1, Nové Město, Příčná

SNP - BYT 5.15

