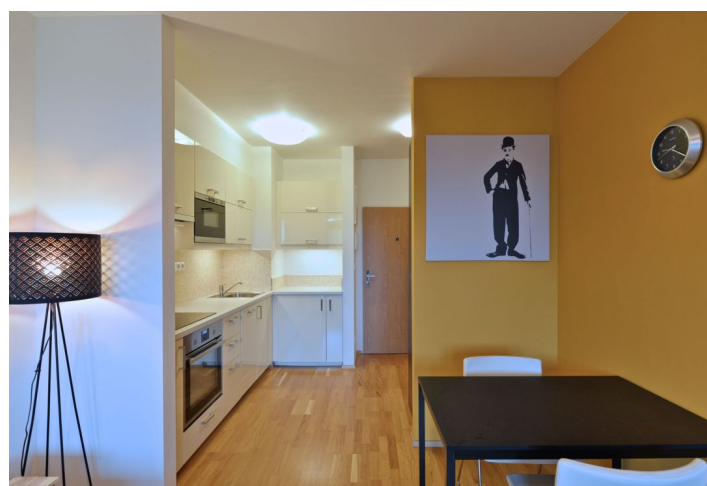
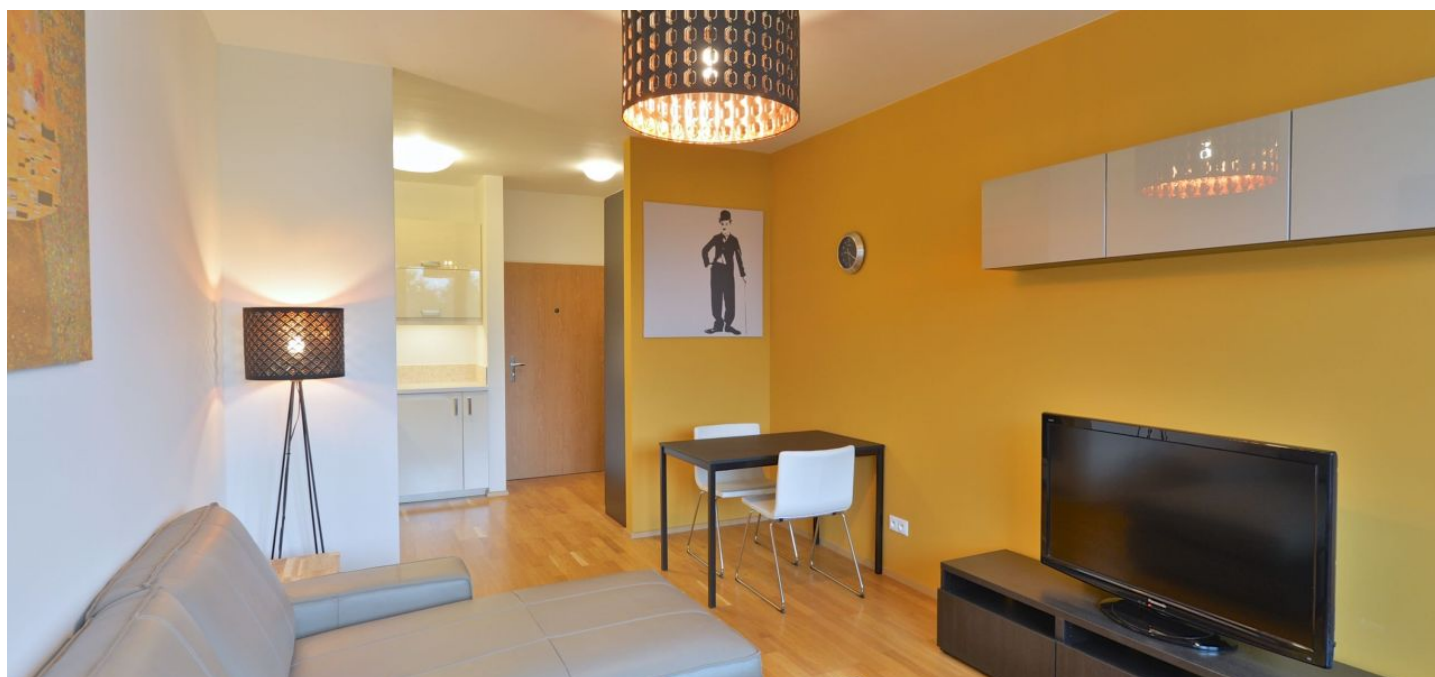


Apartment One-bedroom (2+kk)

Rented

43 m², Prague 6, Veleslavín, Pod Dvorem



Apartment One-bedroom (2+kk)

Rented

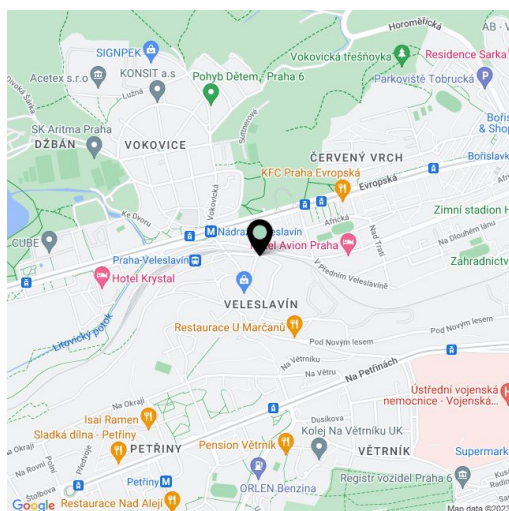
43 m², Prague 6, Veleslavín, Pod Dvorem

Total area	59 m ²
Floor area*	43 m ²
Terrace	16 m ²
Parking	One garage parking space included.
Garage	Yes
Cellar	Yes
Service price	x
PENB	G
Reference number	21282
Available from	Immediately

Fully furnished 1-bedroom flat with a 16 m² terrace, on the third floor with lift in a contemporary residential project with underground parking. Situated next to a park, on the border of Veleslavín and Ořechovka Prague residential areas, with quick access to the city center, with Nádraží Veleslavín metro station and trams just a few min. walk from the building. Green and quiet location, convenient to the airport and international schools in Prague 6.

The bright interior features a living room with a fully fitted open plan kitchen and a dining area, one bedroom, and a bathroom (bathtub with a shower screen, toilet). The **terrace** is accessible from both rooms.

Green views, **wooden floors**, security entry door, large windows, blinds, washer, dishwasher, microwave oven, TV, garden furniture, **cellar**, shared pram and bike storage in the building. One **garage parking space** is included. Monthly deposit for service charges and utilities: CZK 3500.

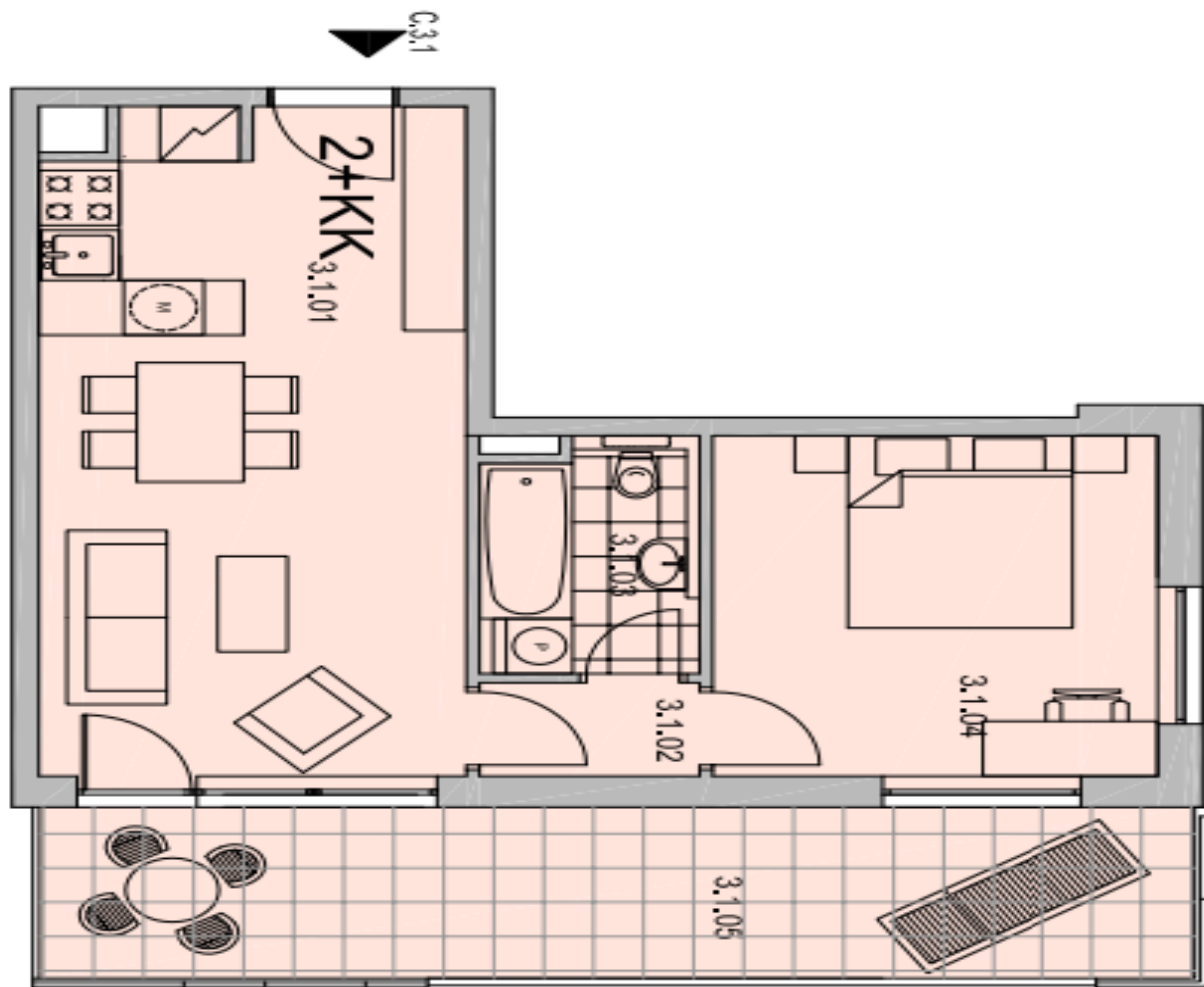


* Area of the unit according to the Civil Code. The area consists of the sum total area of the entire unit bounded by perimeter walls.

Apartment One-bedroom (2+kk)

Rented

43 m², Prague 6, Veleslavín, Pod Dvorem



BYT / FLAT C.3.1 2+kk

Č.MÍST. ROOM No.	NÁZEV MÍSTNOSTI / ROOM	PLOCHA AREA
3.1.01	OBYVACÍ POKOJ + KUCH. KOUT LIVING ROOM + KITCHEN	23,7
3.1.02	CHODBA / CORRIDOR	1,9
3.1.03	KOUPELNA, WC / BATHROOM, WC	4,5
3.1.04	LOŽNICE / BEDROOM	13,1
CELKOVÁ PLOCHA BYTU TOTAL AREA OF ROOMS		43,2
3.1.05	TERASA / TERRACE	16,2
CELKOVÁ PODLAHOVÁ PLOCHA TOTAL AREA OF FLAT		59,4