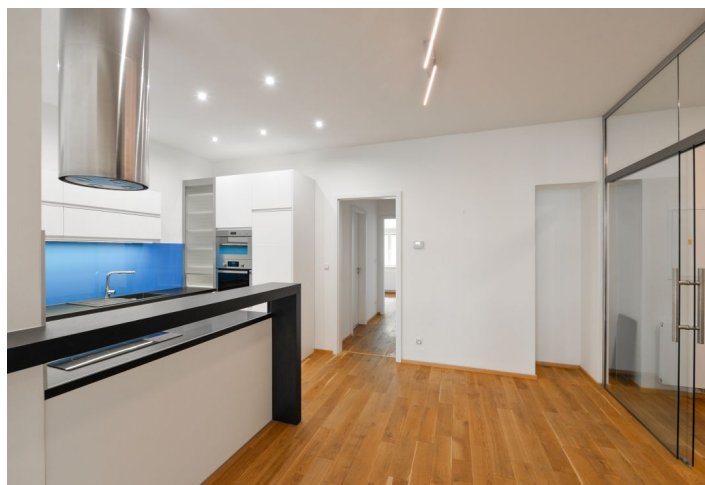




## Apartment Two-bedroom (3+kk)

Rented

96 m<sup>2</sup>, Prague 2, Vyšehrad, Vratislavova





## Apartment Two-bedroom (3+kk)

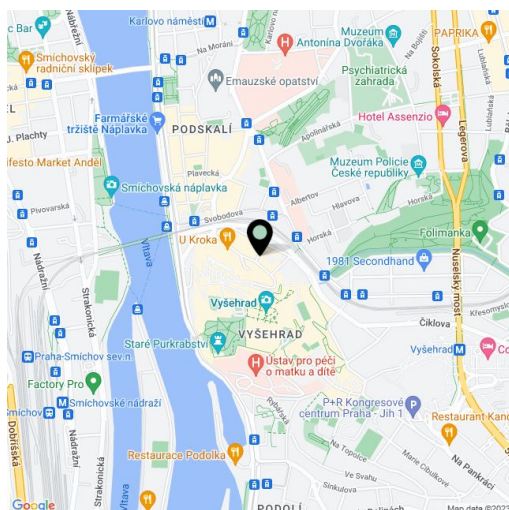
**Rented**96 m<sup>2</sup>, Prague 2, Vyšehrad, Vratislavova

Total area	101 m <sup>2</sup>
Floor area*	96 m <sup>2</sup>
Balcony	5 m <sup>2</sup>
Parking	-
Cellar	-
PENB	G
Reference number	21274
Available from	Immediately

Unfurnished 2-bedroom flat with a balcony in an attractive location right beneath the Vyšehrad Castle park. This completely reconstructed flat is on the second floor of a fully refurbished historic building from the turn of the 19th and 20th centuries, with a lift and a shared courtyard garden. Located in a quiet street within walking distance of the Vltava embankment, with quick tram connections to the city center and Karlovo náměstí (Palackého) metro station.

The interior includes a comfortable living room with dining area, a fully fitted open kitchen, two separate bedrooms facing the courtyard (one with a balcony and one with a small clothes closet), bathroom (large walk-in shower, double sink, toilet), guest toilet, and entry hall.

Nice views of the picturesque facades of the houses across the road, wooden floors, security entry door, gas boiler, dishwasher, microwave oven, audio entry phone. Parking on the street. Common building charges CZK 750/person/month. Gas and electricity are billed separately.



\* Area of the unit according to the Civil Code. The area consists of the sum total area of the entire unit bounded by perimeter walls.