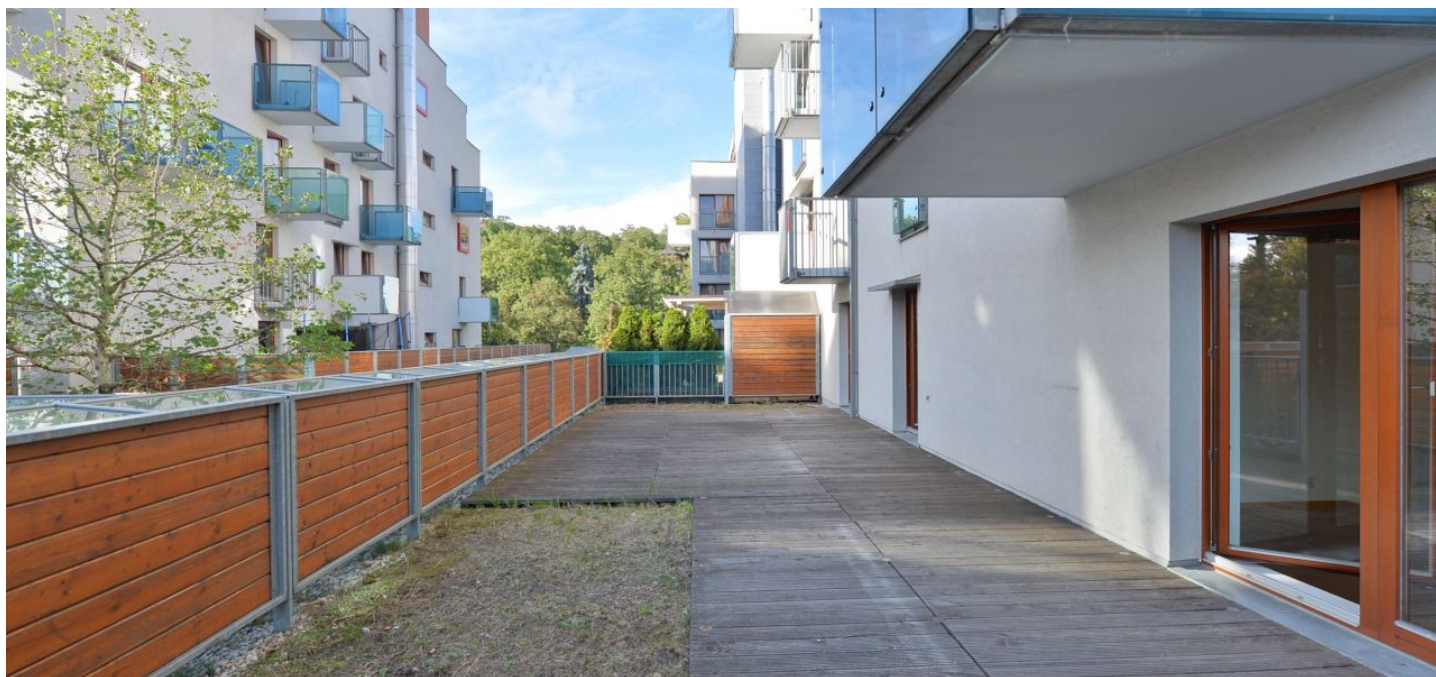


Apartment Two-bedroom (3+kk)

Sold

83 m², Prague 10, Vršovice, Vršovická



Apartment Two-bedroom (3+kk)

Sold

83 m², Prague 10, Vršovice, Vršovická

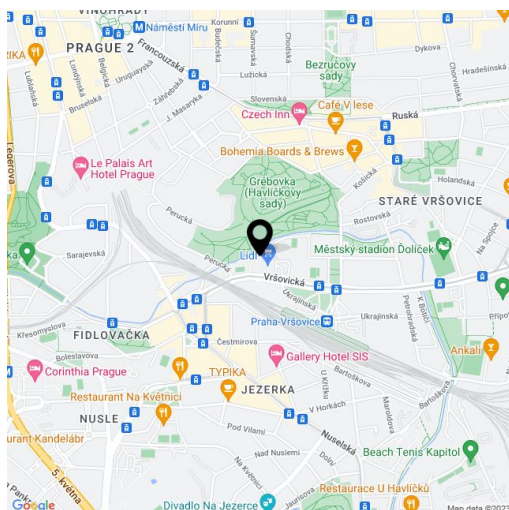
Total area	148 m ²
Floor area*	83 m ²
Terrace	65 m ²
Parking	300 000
Garage	Yes
Cellar	Yes
PENB	C
Reference number	21168

West-facing apartment with a terrace and garden, situated on the 1st floor of a new building next to the Havlíčkovy Sady park - just a 3-minute walk from a bus stop, with full amenities onsite.

The apartment features an open-plan living room with kitchen, 2 bedrooms, a full bathroom (with bathtub, shower and sink), separate toilet, closet, and a hallway. All rooms have access to the terrace. Equipped **with large format wood windows, timber floors**, fully equipped Alno kitchen, brand sanitary ware in the bathrooms. The purchase price includes **1 parking space in the onsite underground garage** and a **cellar**.

The residential complex has a grocery store, fitness studio with indoor swimming pool, and a restaurant. Location with full amenities and easy access to the city center by public transport (tram and bus stop situated just a 3-minute walk from the apartment). Nursery, primary and secondary schools, cafés, restaurants, University Sports Club Praha complex with tennis hall - all nearby.

Interior 83.72 m², terrace + garden 64.55 m², a cellar.



* Area of the unit according to the Civil Code. The area consists of the sum total area of the entire unit bounded by perimeter walls.

Apartment Two-bedroom (3+kk)

Sold

83 m², Prague 10, Vršovice, Vršovická

