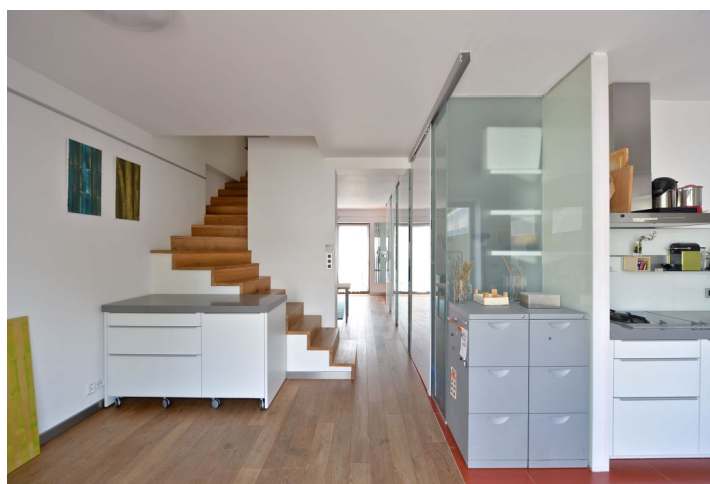


Apartment One-bedroom (2+kk)

Rented

90 m², Prague 4, Libuš, K novému sídlišti



Apartment One-bedroom (2+kk)

Rented

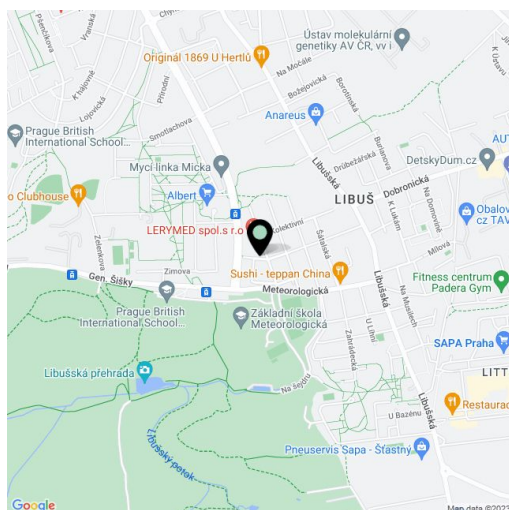
90 m², Prague 4, Libuš, K novému sídlišti

Total area	110 m ²
Floor area*	90 m ²
Terrace	20 m ²
Parking	Parking on the plot.
Cellar	-
PENB	G
Reference number	21103
Available from	Immediately

Fully refurbished furnished 1-bedroom 2-bathroom flat with a 20 m² terrace and a cozy bamboo garden. Located in a quiet and green residential neighborhood just a five minute walk from Modřanská rokle natural canyon with plenty of opportunities for walks, jogging and biking. Quick access to amenities, near the popular Little Hanoi (SAPA) market, and within walking distance of the EISP and PBS international schools.

The lower level features living room with dining area and a new fully fitted open kitchen, bathroom with tub, toilet, entry hall, walk-in closet and laundry area, French windows leading to the terrace and garden, and lots of built-in storage. The upper floor includes a large attic bedroom, walk-in closet, and shower bathroom with toilet.

Wooden floors, tiles, wooden staircase, security entry door, gas boiler, Gaggenau kitchen appliances. One parking space on the plot, easy parking on the street. Utilities are billed separately.



* Area of the unit according to the Civil Code. The area consists of the sum total area of the entire unit bounded by perimeter walls.