

House Three-bedroom (4+kk)

Sold

169 m², Kladno, Unhošť, Terasy V



House Three-bedroom (4+kk)

Sold169 m², Kladno, Unhošť, Terasy V

Plot	324 m ²
Foot print	104 m ²
Garden	220 m ²
Parking	Garage for two vehicles
Garage	Yes
Cellar	-
PENB	B
Reference number	21054

Modern Functionalist-style atrium house, part of the Unhošť Terraces residential project. The project neighbors on original urbanized town houses and villas on one side and naturally continues into an open landscape of meadows and nearby woods with an adjacent picturesque pond in its southwestern part.

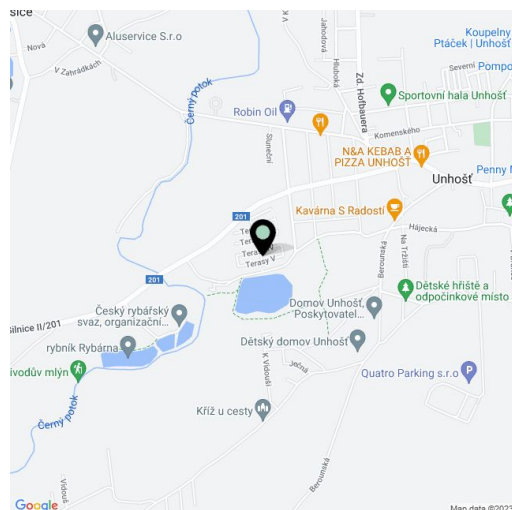
The symbolic connection of new housing with the Křivoklát forests is provided by a meandering stream flowing from the local Bulhar pond. The forests start literally behind the door of your house. The house offers an ideal family layout with the entrance and the living area separated from the private zone. The ground level features a spacious open-plan kitchen, dining and living area with direct access to the terrace and garden. A great benefit of the kitchen area is its large corner window providing an overview of the whole garden. The ground part is completed by a guest toilet, entry hall and a covered outside entrance area which enables convenient connection between the interior and the garage for two cars. Upstairs is a master bedroom with a private walk-in closet and an en suite bathroom, as well as two children's rooms, common (children's) bathroom, and a storage and utility room.

Unhošť is a nice, quiet town, located away from traffic. Apart from sports and recreational activities, Unhošť also offers a full spectrum of amenities - two primary schools, a kindergarten and art school, library, cultural facilities, pharmacy, nursing home, home nursing care, etc. There is also a post office, bank, gas station, fitness center, yoga center, sauna, new soccer playground, indoor sports hall, several groceries, restaurants, and cafes and bars. Unhošť has 4,350 permanent residents and is located 17 km away from Prague, 8 km from Kladno and 17 km from Beroun. It features a direct bus connection with all of these places. There are 20 bus connections a day, which take you to the Hradčanská or Zličín metro stations in 30 minutes, as well as to Kladno. A train ride to Zličín takes 20 minutes and to Prague's Masaryk Station it is approx. 40 minutes. During rush hour, trains leave every 20 minutes with the train station being 2 km away from the square. A car ride to Prague's western outskirts (Zličín, Vypich) via the newly built E48 highway takes 20 minutes, a ride to the Vaclav Havel airport takes 10 minutes.

This modern home offers an ideal balance between countryside and city living, and traditional family background and urban social life. The general cordial atmosphere among the people who live in this project adds to its value.

Interior of the house 169 m², garden 220 m², built-up area 104 m², plot 324 m².

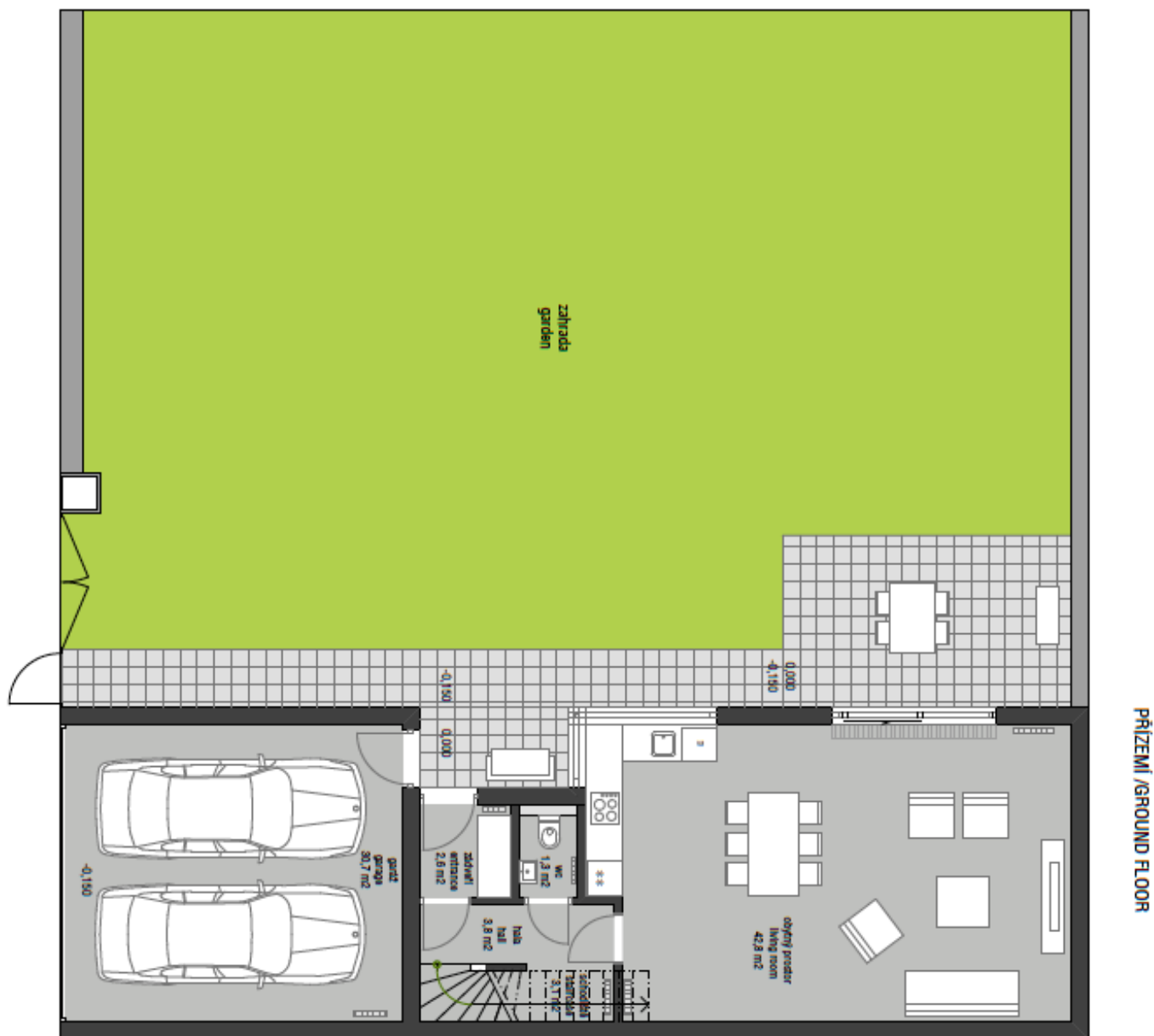
Urbanism - **Studio A-LT**, architecture - **atelier A69**, project design - **AED Project**, General contractor - **SKANSKA**.



House Three-bedroom (4+kk)

Sold

169 m², Kladno, Unhošť, Terasy V

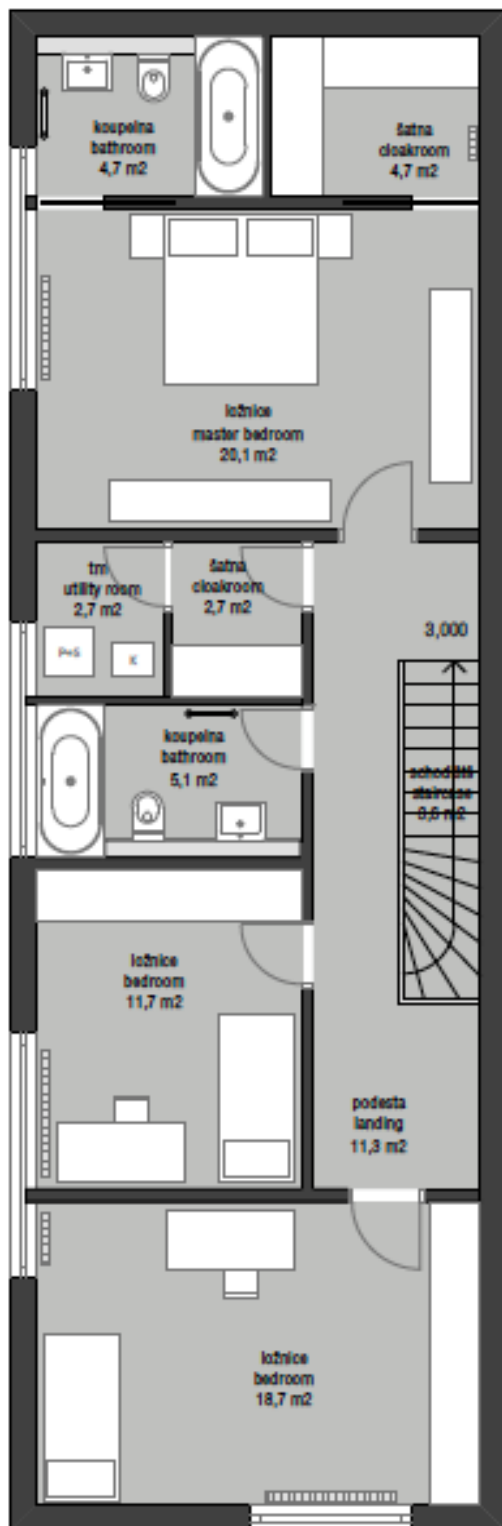


House Three-bedroom (4+kk)

Sold

169 m², Kladno, Unhošť, Terasy V

PATRO / FIRST FLOOR



typ A - L

BILANCE PLOCH

	m ²
GFA / HPP	169,5
UFA / ČPP	138,5
garáž / garage - ČPP	30,7