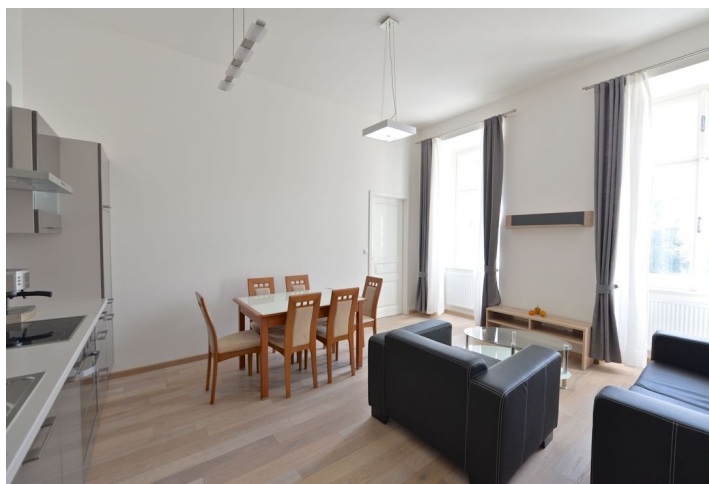




## Apartment One-bedroom (2+kk)

Rented

57 m<sup>2</sup>, Prague 5, Smíchov, Elišky Peškové





## Apartment One-bedroom (2+kk)

Rented

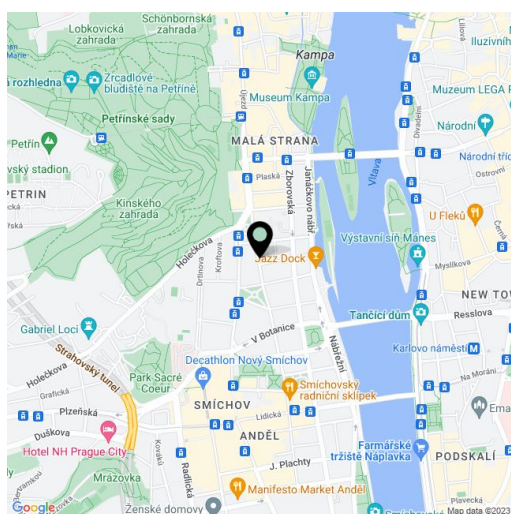
57 m<sup>2</sup>, Prague 5, Smíchov, Elišky Peškové

Total area	57 m <sup>2</sup>
Parking	-
Cellar	Yes
PENB	D
Reference number	21044
Available from	Immediately

Fully renovated furnished 1-bedroom flat on the first floor of a completely refurbished traditional building with lift and preserved original features. Located in a quiet street next to a park, just a few minute walk from Anděl commercial and entertainment center with a metro station and multiple tram links, a few blocks from the Vltava riverbank, just about ten minutes to the city center.

The interior includes living / dining room with a fully fitted open plan kitchen, one bedroom, shower bathroom with toilet, storage / laundry room, and a spacious entry hall.

Nice views of the adjacent green square, new kitchen, new furniture, high ceilings, large windows, storage, wooden floors, tiles, security entry door, washer, dryer, dishwasher, microwave oven, satellite TV, basement storage unit. South / East orientation. Shared courtyard with a small children's playground. Common building charges and deposit for utilities max. CZK 2,500/month.



\* Area of the unit according to the Civil Code. The area consists of the sum total area of the entire unit bounded by perimeter walls.



## Apartment One-bedroom (2+kk)

Rented

57 m<sup>2</sup>, Prague 5, Smíchov, Elišky Peškové

