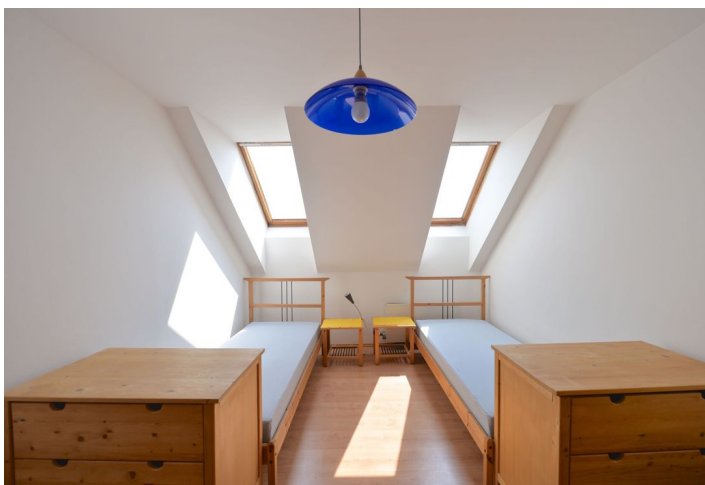


## Apartment Two-bedroom (3+1)

Rented

105 m<sup>2</sup>, Prague 10, Vršovice, Sevastopolská



# Apartment Two-bedroom (3+1)

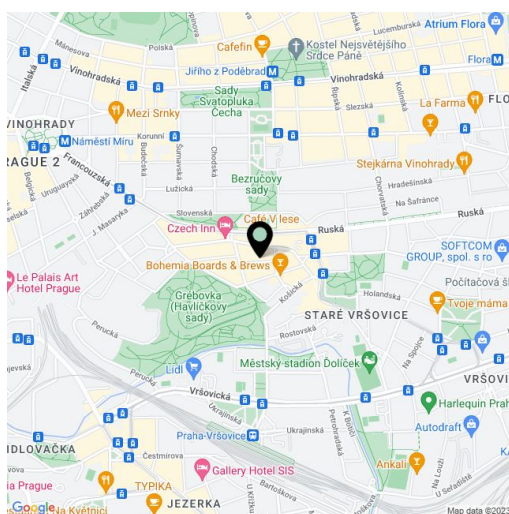
**Rented**105 m<sup>2</sup>, Prague 10, Vršovice, Sevastopolská

Total area	105 m <sup>2</sup>
Parking	-
Cellar	-
PENB	G
Reference number	20876
Available from	Immediately

Furnished 2-bedroom split-level attic flat situated on the fourth floor of a residential building with a lift. Located on the border of Vinohrady and Vršovice neighborhoods, just two minutes from the Havlíčkovy sady park, with easy connection to the city center, two short tram stops from Náměstí Míru metro station with full amenities in the area.

The lower level includes one bedroom, a fully fitted kitchen, living room, a windowed bathroom with bath tub, toilet, and entry hall. The upper floor is accessible from the living room and it features a partially open second bedroom.

Laminated floors, tiles, gas boiler, blinds, washing machine, basic kitchenware, Internet, audio entry phone. Common building charges and deposit for utilities around CZK 5000 per month. Ideal accomodation for four students.



\* Area of the unit according to the Civil Code. The area consists of the sum total area of the entire unit bounded by perimeter walls.