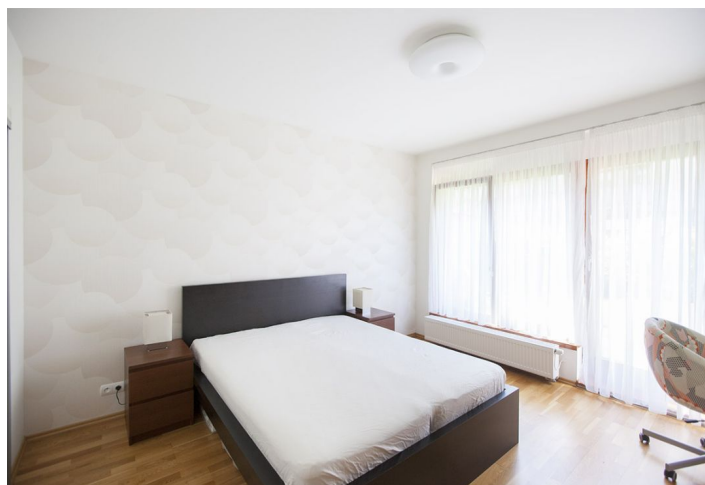


## Apartment One-bedroom (2+kk)

Sold

76 m<sup>2</sup>, Prague 5, Jinonice, U Panské zahrady



# Apartment One-bedroom (2+kk)

**Sold**76 m<sup>2</sup>, Prague 5, Jinonice, U Panské zahrady

<b>Total area</b>	76 m <sup>2</sup>
<b>Garden</b>	99 m <sup>2</sup>
<b>Parking</b>	350 000
<b>Garage</b>	Yes
<b>Cellar</b>	Yes
<b>Service price</b>	5 000 CZK monthly
<b>PENB</b>	C
<b>Reference number</b>	20741

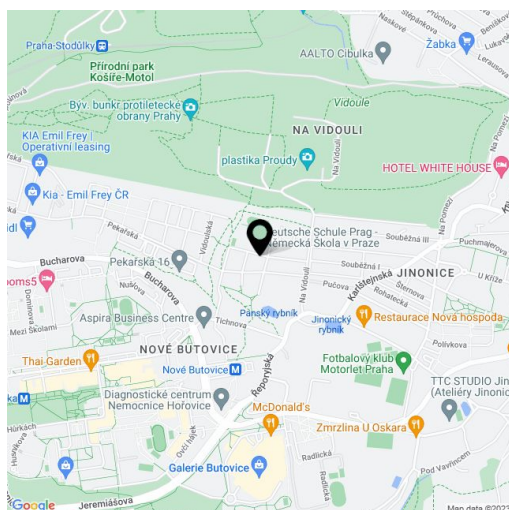
**West facing modern apartment with private garden and garage parking, located on the ground floor of a new building that is situated in the attractive residential complex of Botanica in Prague 5 - Jinonice, close to the Deutsche Schule, Cibulka Park and the Nové Butovice metro station.**

The interior consists of a living room with kitchen, pantry and French windows, a bedroom with walk-in closet and bathroom, separate toilet and 2 halls. Both rooms have access to the garden, which boasts ornamental greenery.

Fully equipped kitchen with Siemens and Bosch appliances, quality hardwood floors, ceramic tiles, wood French windows with electric operated roller shutters, heated floor in the bathroom, video intercom, Jablotron security system connected to the ARC, fire detector, NEXT security entrance door. Heating provided by boiler room in the house, with the possibility of electronic control in the apartment. Garden with massaranduba wood covered terrace, with automatically controlled awning; garden house and electricity / water connection. The purchase price includes a parking space in the underground garage and a cellar.

Residential area near the Vidoule natural monument, Jinonický zámek chateau, Butovice shopping mall and Golf Club Praha. Václav Havel Airport is a 15-minute drive from the house.

Interior 76 m<sup>2</sup>, garden 99 m<sup>2</sup>, cellar 3.2 m<sup>2</sup>.



\* Area of the unit according to the Civil Code. The area consists of the sum total area of the entire unit bounded by perimeter walls.