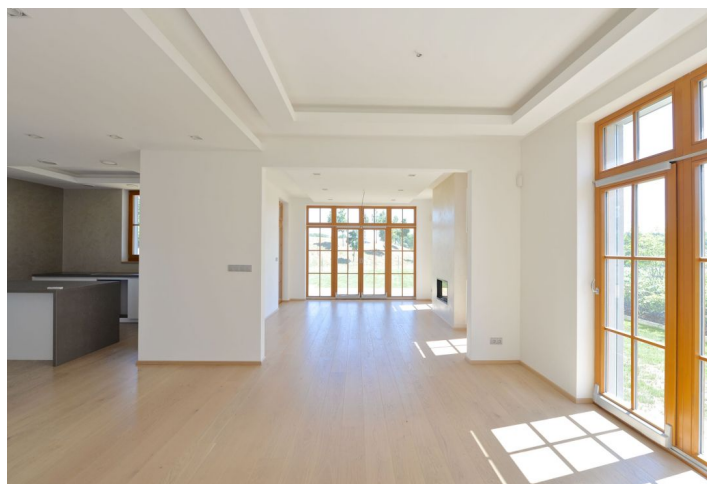


House Three-bedroom (4+kk)

Sold

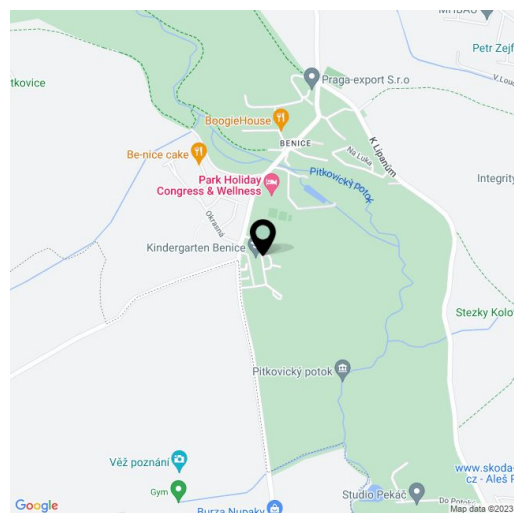
220 m², Prague 10, Benice, Žitavská



House Three-bedroom (4+kk)

Sold220 m², Prague 10, Benice, Žitavská

Plot	1 129 m ²
Foot print	162 m ²
Garden	967 m ²
Parking	Garage for 2 cars.
Garage	Yes
Cellar	-
PENB	B
Reference number	20715



Family house with garden and garage located in architecturally unified and impressive residential area in the outskirts of Prague. Easy connection to Prague by car (15 minutes via highway D1), within the reach of the Čestlice shopping area and all public amenities in Průhonice.

On the ground floor there is an entrance hall with cloakroom, a kitchen, dining room, home cinema, living room with terrace and **fireplace**, study room and garage for 2 cars with direct access to the interior. The first floor offers 3 bedrooms with balconies (master bedroom with en suite walk-in wardrobe and bathroom), main bathroom and a study.

Equipment includes **Kahrs quality hardwood floorboards** (heated on the ground floor) and large format ceramic wall tiles, wooden windows and wooden French windows with remote-controlled shutters, solid interior doors, fully equipped **Hanák kitchen**, Villeroy & Boch bathroom fixtures including **rain shower**, ceiling spot lights, preparation for built-in wine fridge, Buderus condensing boiler, fire and security system including connection to ARC (arrival within few minutes).

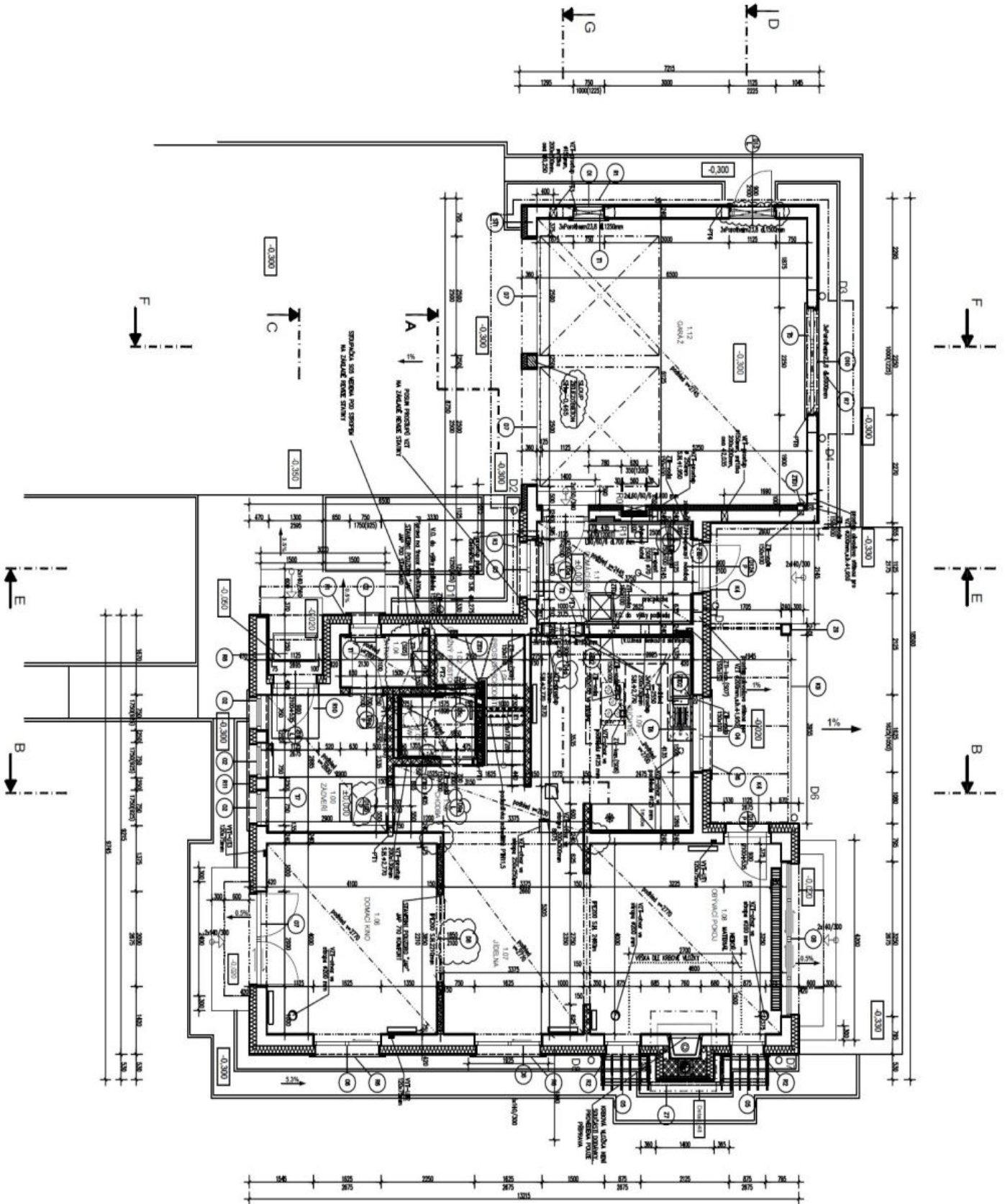
Quiet street in the vicinity of the Club Park Holiday sports and entertainment center with **squash hall, tennis courts, bowling lanes and a stylish restaurant**. Nearby there is a **swimming pool**, children's playground, football field, bus stop.

Interior 219.6 m², terrace/balcony 25.6 m², plot 1 129 m².

House Three-bedroom (4+kk)

Sold

220 m², Prague 10, Benice, Žitavská



House Three-bedroom (4+kk)

Sold

220 m², Prague 10, Benice, Žitavská

