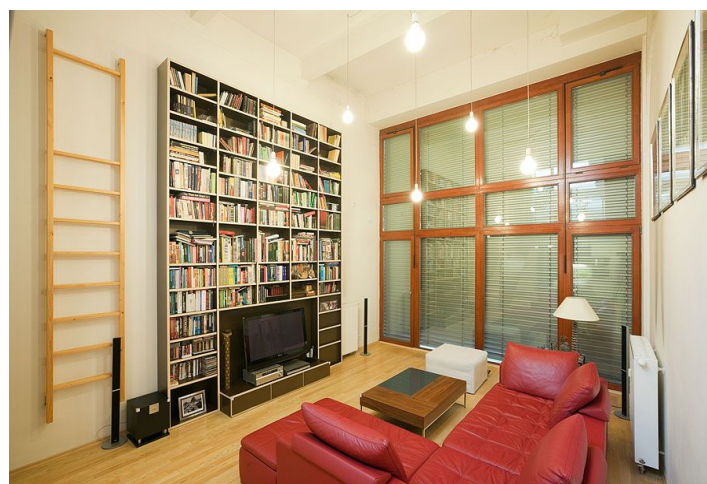


Apartment One-bedroom (2+kk)

Rented

110 m², Prague 8, Libeň, Novákových



Apartment One-bedroom (2+kk)

Rented110 m², Prague 8, Libeň, Novákových

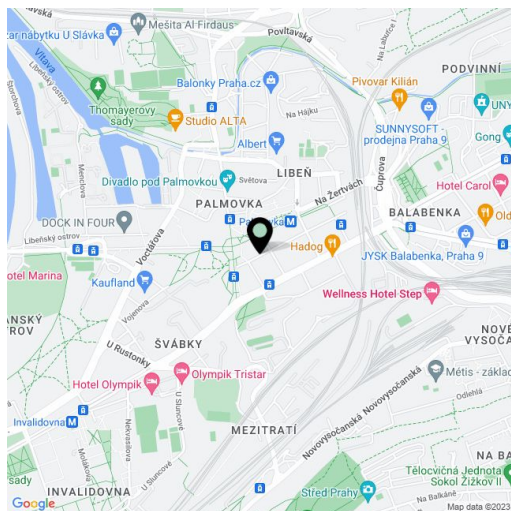
Total area	110 m ²
Garden	25 m ²
Parking	Garage parking.
Garage	Yes
Cellar	Yes
PENB	G
Reference number	20676
Available from	Immediately

Benefiting from a courtyard garden, this modern fully furnished 1-bedroom flat is designed in the style of New York lofts. Situated on the ground floor in a contemporary residential project just a two minute walk from Palmovka metro station and tram stops. Quickly developing location with full amenities within easy reach, and with quick access to the city center.

The interior features an entrance hall with large built-in wardrobes, bathroom with tub and a walk-in shower, a separate toilet, open kitchen area fully equipped with Siemens appliances, a large dining table and living room with floor-to-ceiling windows leading to the private garden. The upper floor features a stylish study with a large skylight and lots of storage space, and one bedroom with a walk-in closet.

Other features include custom designed furniture, ceiling high built-in library in the living room with a capacity of up to 900 books, a leather sofa, Pioneer audio and video equipment, remote control operated metal blinds and ash parquet floors. The flat is oriented to the West towards a quiet courtyard with a park and mature trees. Cellar and one garage parking space included. Common building charges, water, heating and garage approx. CZK 3,000/month. Electricity approx. CZK 1000/month. Available from September 2018.

Interior 110 m², garden 25 m².



* Area of the unit according to the Civil Code. The area consists of the sum total area of the entire unit bounded by perimeter walls.