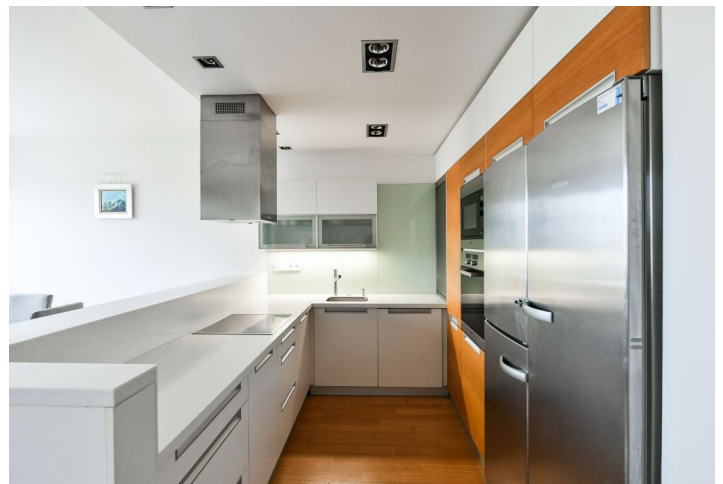


Apartment Two-bedroom (3+kk)

Rented

120 m², Prague 6, Břevnov, Rejchova



Apartment Two-bedroom (3+kk)

Rented

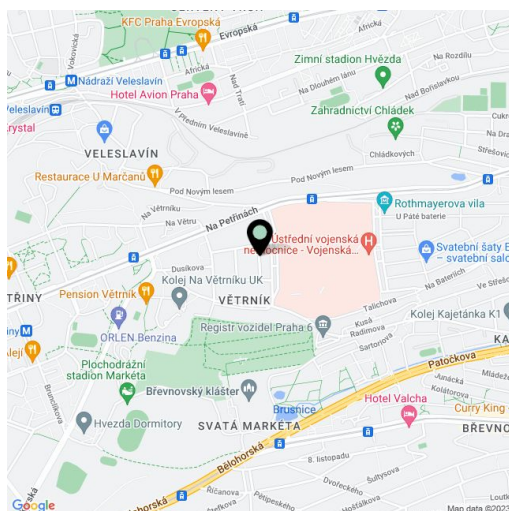
120 m², Prague 6, Břevnov, Rejchova

Total area	133 m ²
Floor area*	120 m ²
Terrace	13 m ²
Parking	Two garage parking spaces.
Garage	Yes
Cellar	-
Service price	Common building charges and deposit for utilities CZK 11,000 per month.
PENB	G
Reference number	20627
Available from	Immediately

This is a fully furnished air-conditioned 2-bedroom split-level apartment with a terrace and a balcony, situated on the second floor of a modern building with underground parking and a lift. Located in a quiet green residential neighborhood with full amenities within easy reach, quick connections to the airport and the city center. Convenient to the Petřiny metro station and international schools in Prague 6.

The lower level includes a living room with a fully fitted open plan kitchen and a **balcony**, a large fitted **walk-in closet**, a storage room, a guest toilet, and an entrance hall. The first floor offers two bedrooms with **terrace** access, and a full bathroom.

Floating floors, security entry door, blinds, **Miele** kitchen appliances, washer, dryer, TV, alarm. **Two garage parking spaces** are included.



* Size of the unit according to the Housing Act.

The area consists of the sum total of the internal area of every room.