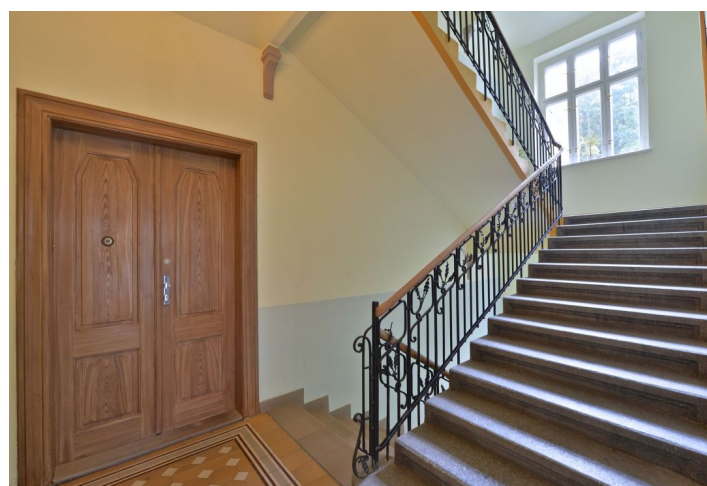


Office space

Rented

Prague 5, Smíchov, Bieblova



Office space

Rented

Prague 5, Smíchov, Bieblova

Service price	35 CZK monthly per m ²
Available area	69 m ²
Cellar	-
Parking	Yes
PENB	G
Reference number	20513

Office space for lease on the ground floor of a reconstructed early Art Nouveau building built at the beginning of the 20th century. Located in Prague 5, in close vicinity of two parks, suitable as an office, a doctor's office, etc.

Location:

The building is situated close to one of Prague's shopping centers and within walking distance of the Anděl metro station (line B). The offices are easily accessible by car and public transportation. A number of tram stops, and a bus and train station are nearby.

Features and services:

- security system connected to a PCO
- computer networks
- possibility of connecting to land lines
- possibility of office cleaning services
- parking

The rental price is **CZK 220/m²/month**. Rental and service charges listed without VAT. Lessee pays no commission.

