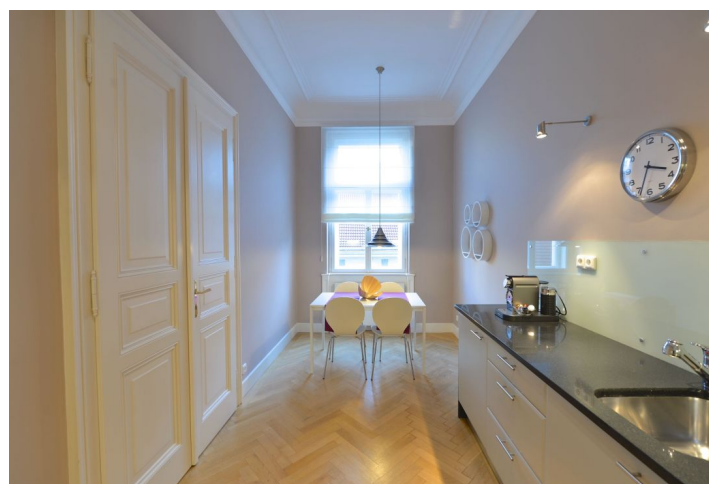


Apartment Two-bedroom (3+1)

Rented

117.8 m², Prague 1, Nové Město, Truhlářská



Apartment Two-bedroom (3+1)

Rented

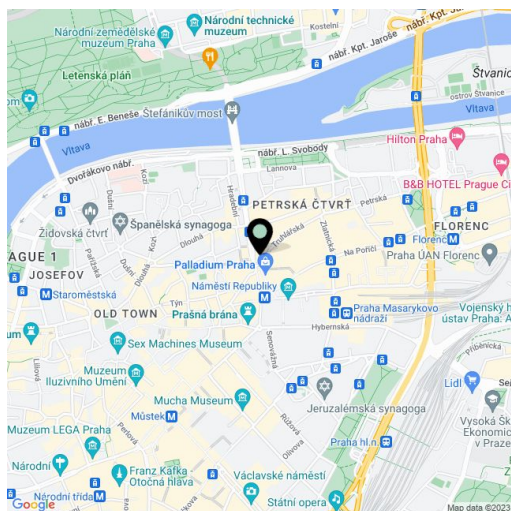
117.8 m², Prague 1, Nové Město, Truhlářská

Total area	120 m²
Floor area*	118 m²
Balcony	2 m²
Parking	-
Cellar	-
Service price	Deposit for common building charges and utilities CZK 7,000/month.
PENB	D
Reference number	20505
Available from	Immediately

Fully refurbished furnished apartment located on the 2nd floor of a classic late 19th century building, superbly renovated with attention to detail and retrofitted with an elevator. Offering modern living standards, high-quality finishings, and a lively central location, the unit is located on a quiet street just steps from Republic Square, within walking distance of Old Town as well as Wenceslas Square. The surroundings offer many restaurants, cafes, clubs, and cultural venues. Shopping centers with supermarkets, medical services, or even a swimming pool are nearby. Excellent connections are provided by tram stops located just a few meters away, and the Florenc subway transfer station or the Náměstí Republiky station are also within easy walking distance.

The apartment has a fully fitted eat-in kitchen, a living room with access to a balcony, two bedrooms, a large fitted walk-in closet and a windowed bathroom with tub, a separate toilet, and an entry hall.

Preserved original features, high ceilings, large windows, hardwood parquet floors and tiles, interior double doors, security entry door, dishwasher, toaster, kettle and Nespresso machine. TV with SAT reception, Wi-Fi Internet, washing machine, laptop-size safe.



* Area of the unit according to the Civil Code. The area consists of the sum total area of the entire unit bounded by perimeter walls.

Apartment Two-bedroom (3+1)

Rented

117.8 m², Prague 1, Nové Město, Truhlářská

