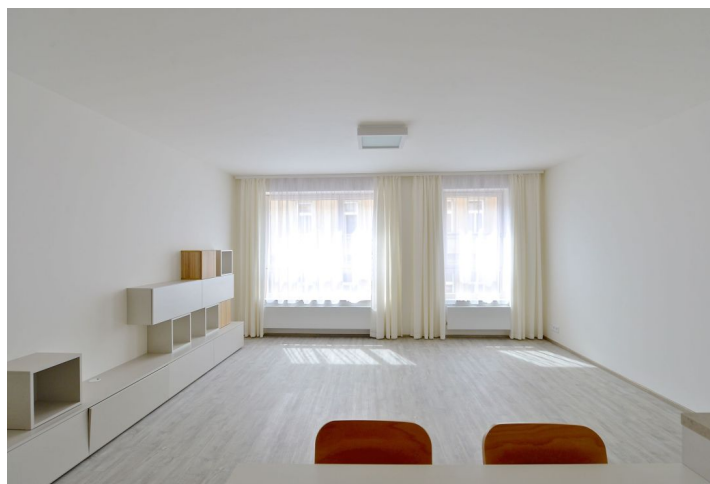


## Apartment One-bedroom (2+kk)

Rented

69 m<sup>2</sup>, Prague 10, Vršovice, Donská



## Apartment One-bedroom (2+kk)

Rented

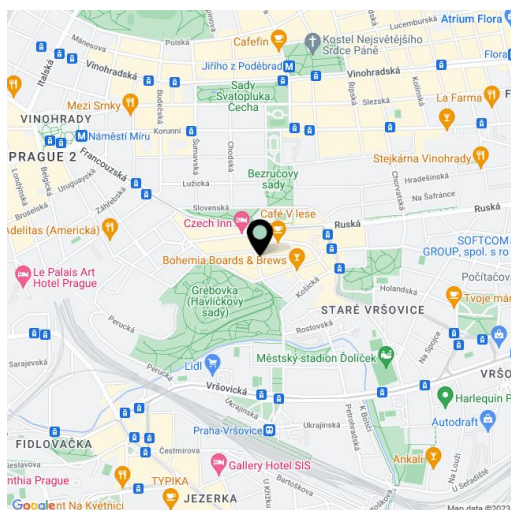
69 m<sup>2</sup>, Prague 10, Vršovice, Donská

Total area	69 m <sup>2</sup>
Parking	Garage parking.
Garage	Yes
Cellar	Yes
Service price	Common building charges CZK 4,220/month. Deposit for heating, water, electricity and Internet CZK 4,260/month.
PENB	B
Reference number	20322
Available from	Immediately

Partly furnished 1-bedroom flat on the fourth floor of a modern building with a lift and parking. Located on the border of Vinohrady and Vršovice neighborhoods, just two minutes from the Havlíčkovy sady park, with easy connection to the city center, two short tram stops from Náměstí Míru metro station with full amenities in the area.

The interior includes a spacious living room with a fully fitted open kitchen and dining area, one bedroom, bathroom with tub and toilet, and entry hall.

Vinyl and tile floors, security entry door, built-in wardrobes, wooden triple glazed windows, remote control operated outdoor blinds, washer, dryer, dishwasher, microwave oven, video entry phone, Internet, alarm, central switch, cellar. Chip operated entrance to the building and lift. One garage parking space at CZK 2,000/month.



\* Area of the unit according to the Civil Code. The area consists of the sum total area of the entire unit bounded by perimeter walls.

# Apartment One-bedroom (2+kk)

Rented

69 m², Prague 10, Vršovice, Donská

