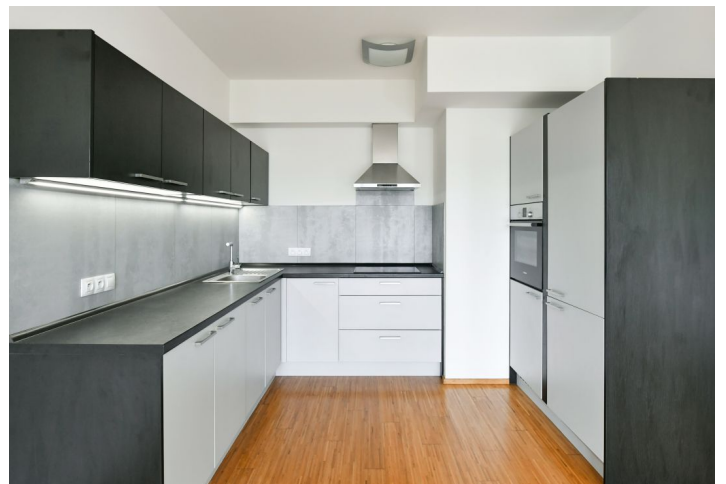


## Apartment Two-bedroom (3+kk)

Rented

92 m<sup>2</sup>, Prague 6, Břevnov, Na Petynce



# Apartment Two-bedroom (3+kk)

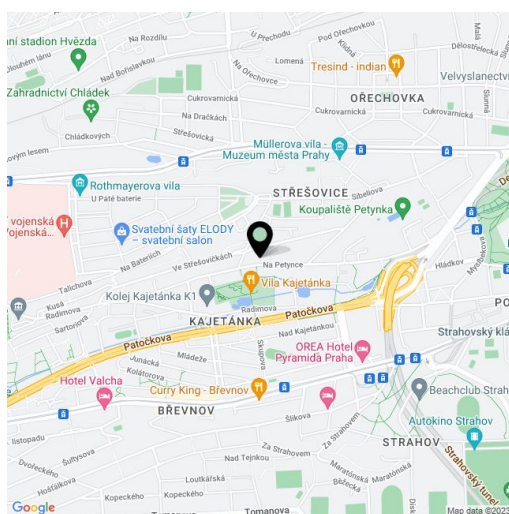
**Rented**92 m<sup>2</sup>, Prague 6, Břevnov, Na Petynce

<b>Total area</b>	109 m <sup>2</sup>
<b>Floor area*</b>	92 m <sup>2</sup>
<b>Terrace</b>	17 m <sup>2</sup>
<b>Parking</b>	Garage parking.
<b>Garage</b>	Yes
<b>Cellar</b>	Yes
<b>Service price</b>	Common building charges and heating CZK 5,000 per month. Electricity will be transferred to the tenant.
<b>PENB</b>	G
<b>Reference number</b>	20208
<b>Available from</b>	Immediately

**This air-conditioned apartment with 2 bathrooms and a 17 sq. m. terrace facing a green park is on the first floor of a building with an elevator that has been fully renovated and transformed into a modern residence with a camera system and underground parking. Located in a quiet residential area just a 15-minute walk to Prague Castle, with quick access to Ladronka Park, international schools, the city center, and the airport.**

The interior includes a living room with a dining area and a fully fitted open plan kitchen, a master bedroom with an en-suite shower bathroom, a second bathroom with a bathtub, a guest toilet, and an entrance hall. The terrace is accessible from both bedrooms and the living room.

Hardwood parquet floors, French windows, security entry door, video entry phone, basement storage unit, elevator. One garage parking space included.



\* Area of the unit according to the Civil Code. The area consists of the sum total area of the entire unit bounded by perimeter walls.