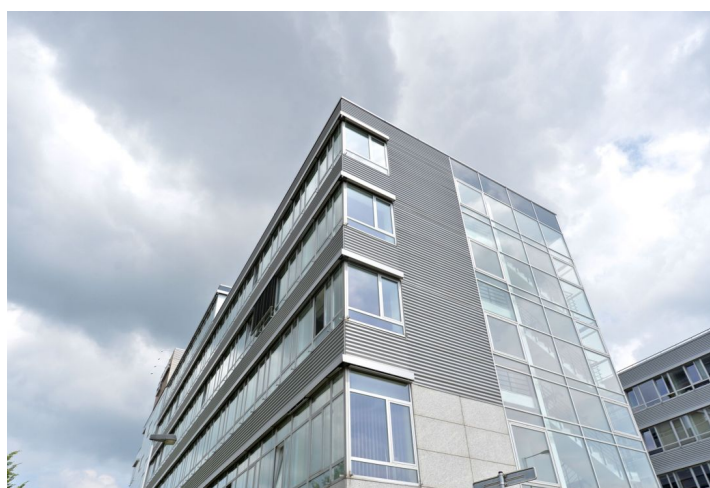
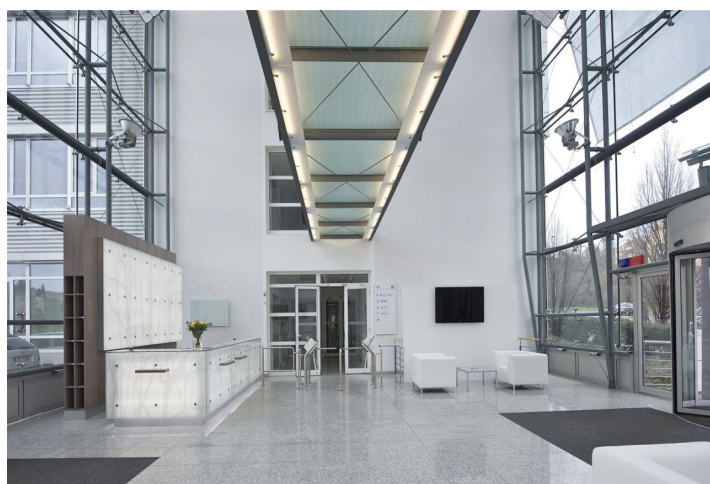


## Office space

€ 15.25 / m<sup>2</sup> | CZK 381 / m<sup>2</sup>

Prague 6, Dejvice, Evropská



## Office space

€ 15.25 / m<sup>2</sup> | CZK 381 / m<sup>2</sup>

Prague 6, Dejvice, Evropská

Service price	165 CZK monthly per m <sup>2</sup>
Available area	422 m <sup>2</sup>
Cellar	-
Parking	EUR 90 / ps / month
PENB	G
Reference number	20167

**Office space for lease on the ground floor in an office complex in Prague 6. This class A/B office building with a total leasable area of 24,900 sq. m is located in a prestigious district on Evropská Street.**

For tenants is available a shared terrace for relaxation. Underground garages provide comfortable parking with an excellent ratio of parking spaces to leasable area. In addition, the building has been awarded a BREEAM Very Good rating, which underlines its high standard and the quality of the facilities provided.

**Location:**

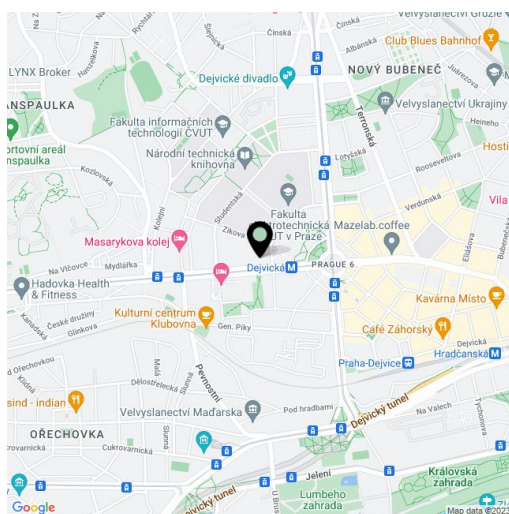
The complex is located on Evropská Street in Prague 6 and is very easy accessible by car and public transport – the Dejvická metro station (line A) is only two tram stops away. There is a tram stop directly outside the building. Easy access to Vaclav Havel Airport Prague and to the city center.

**Features and Services:**

- Main reception lobby with a coffee shop
- 24-hour security/CCTV
- Full-time on-site property management team
- Air conditioning
- Openable windows
- Raised floors/floor boxes
- Suspended ceilings
- Kitchenette and toilets
- Restaurant
- Common garden terrace adjacent to food services
- Full service fitness center (sauna, personal training, group exercise classes, corporate challenge programs)
- Underground parking and parking for visitors

**Available from 1st May, 2025.**

Rental and service charges listed without VAT. Lessee pays no commission.



Office space

Prague 6, Dejvice, Evropská

€ 15.25 / m<sup>2</sup> | CZK 381 / m<sup>2</sup>

