

## House Four-bedroom (5+1)

Sold

234 m<sup>2</sup>, Prague 6, Nebušice, V Oblouku



## House Four-bedroom (5+1)

**Sold**234 m<sup>2</sup>, Prague 6, Nebušice, V Oblouku

Plot	379 m <sup>2</sup>
Foot print	130 m <sup>2</sup>
Garden	249 m <sup>2</sup>
Parking	Garage with remote control.
Garage	Yes
Cellar	Yes
PENB	G
Reference number	20149

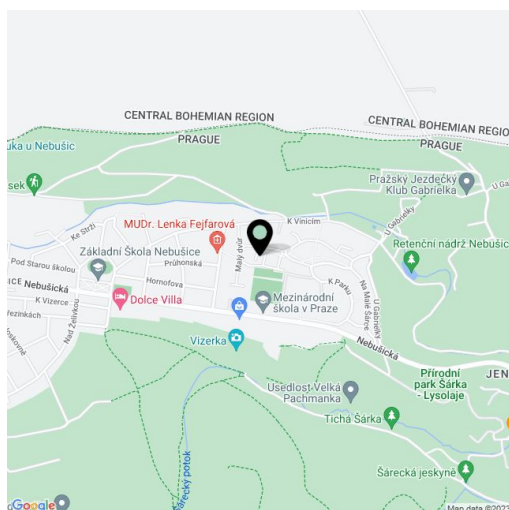
**Four-bedroom two-bathroom family house with a full basement and garden set in the very pleasant Malá Šárka subdivision of 140 houses built around the International School of Prague (ISP). Convenient to the city center and to the Prague international airport.**

This is a "B" model house. The ground floor offers a living / dining room with terrace and garden access, a fully equipped separate kitchen, guest toilet, and entry hall. The upper floor includes a master bedroom with en-suite bathroom with a bathtub, three more bedrooms, shower bathroom, and a guest toilet. The basement floor is a large open space with storage and laundry area.

Other features include **parquet floors** and tiles, carpets, gas boiler, **alarm**. The house has direct access to the garage. Connection to **24-hour security service** on the premises serviced by private company.

Very pleasant setting, ideal for families. Attractive residential location in Prague 6 **surrounded by a forest**, close to all amenities and within easy reach of the city center. There is a bus stop near the house. The photos are of a similar house in the subdivision.

Interior 234 m<sup>2</sup>, built-up area 130 m<sup>2</sup>, garden 249 m<sup>2</sup>, plot 379 m<sup>2</sup>.

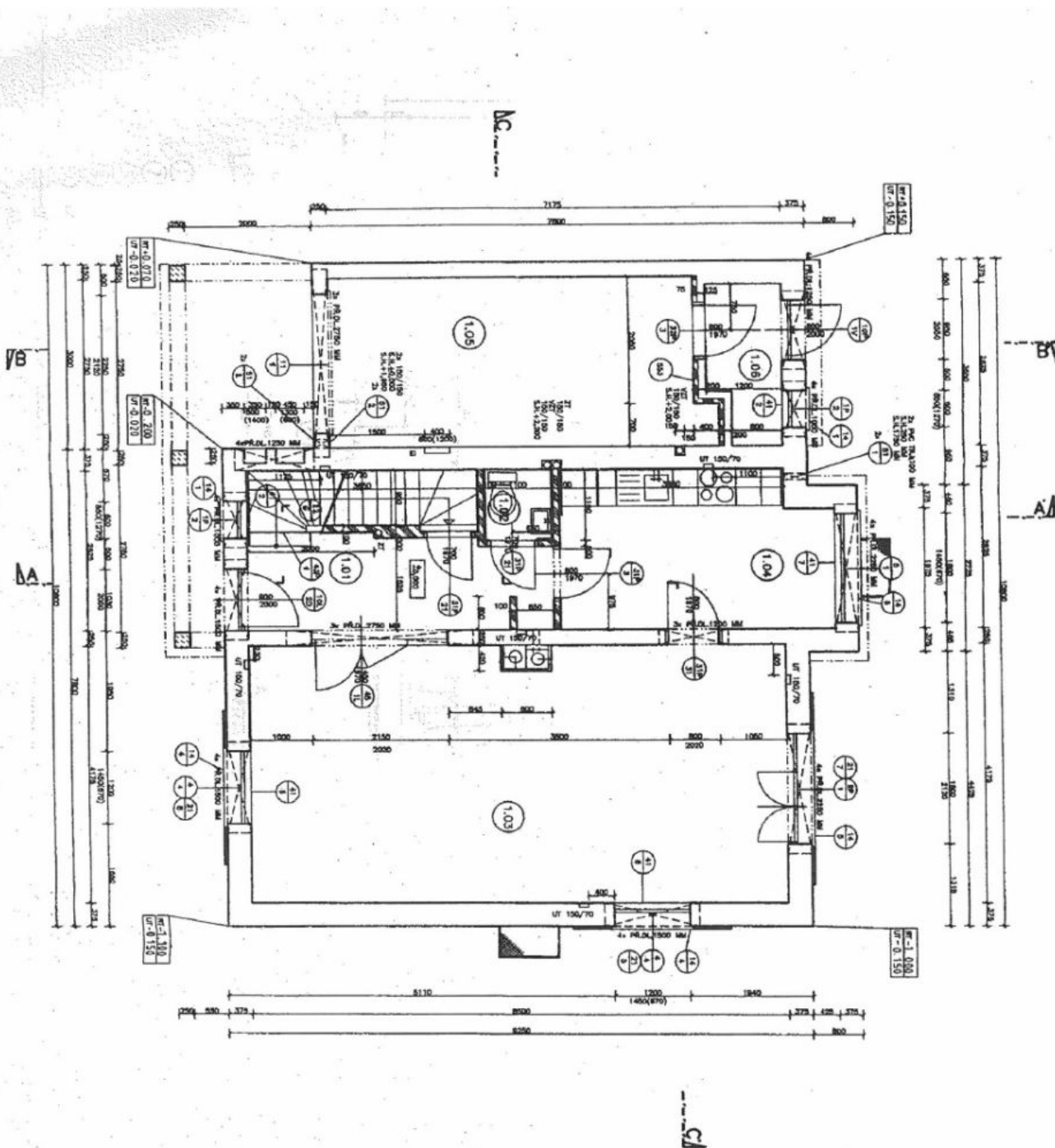




# House Four-bedroom (5+1)

Sold

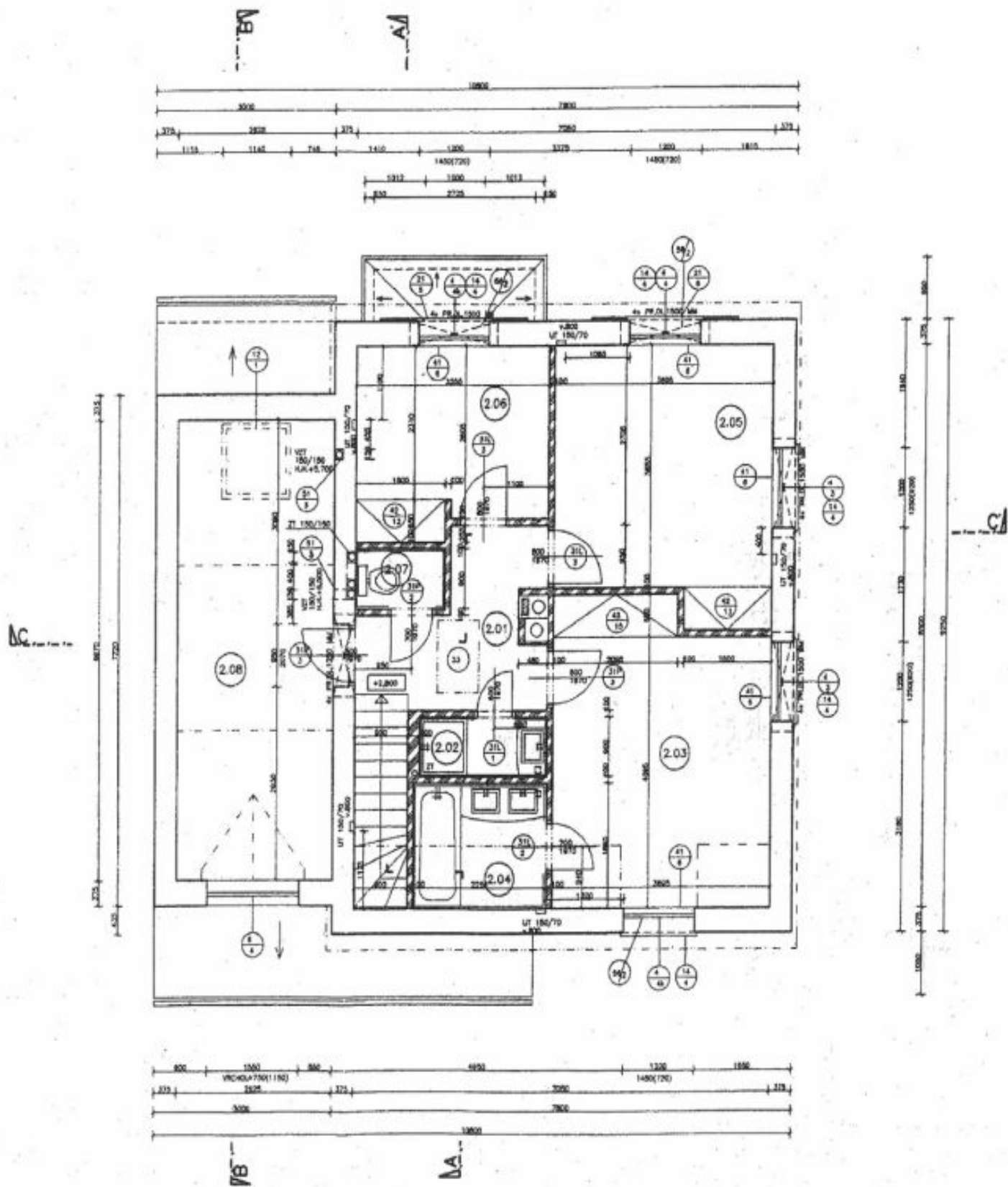
234 m<sup>2</sup>, Prague 6, Nebušice, V Oblouku



# House Four-bedroom (5+1)

Sold

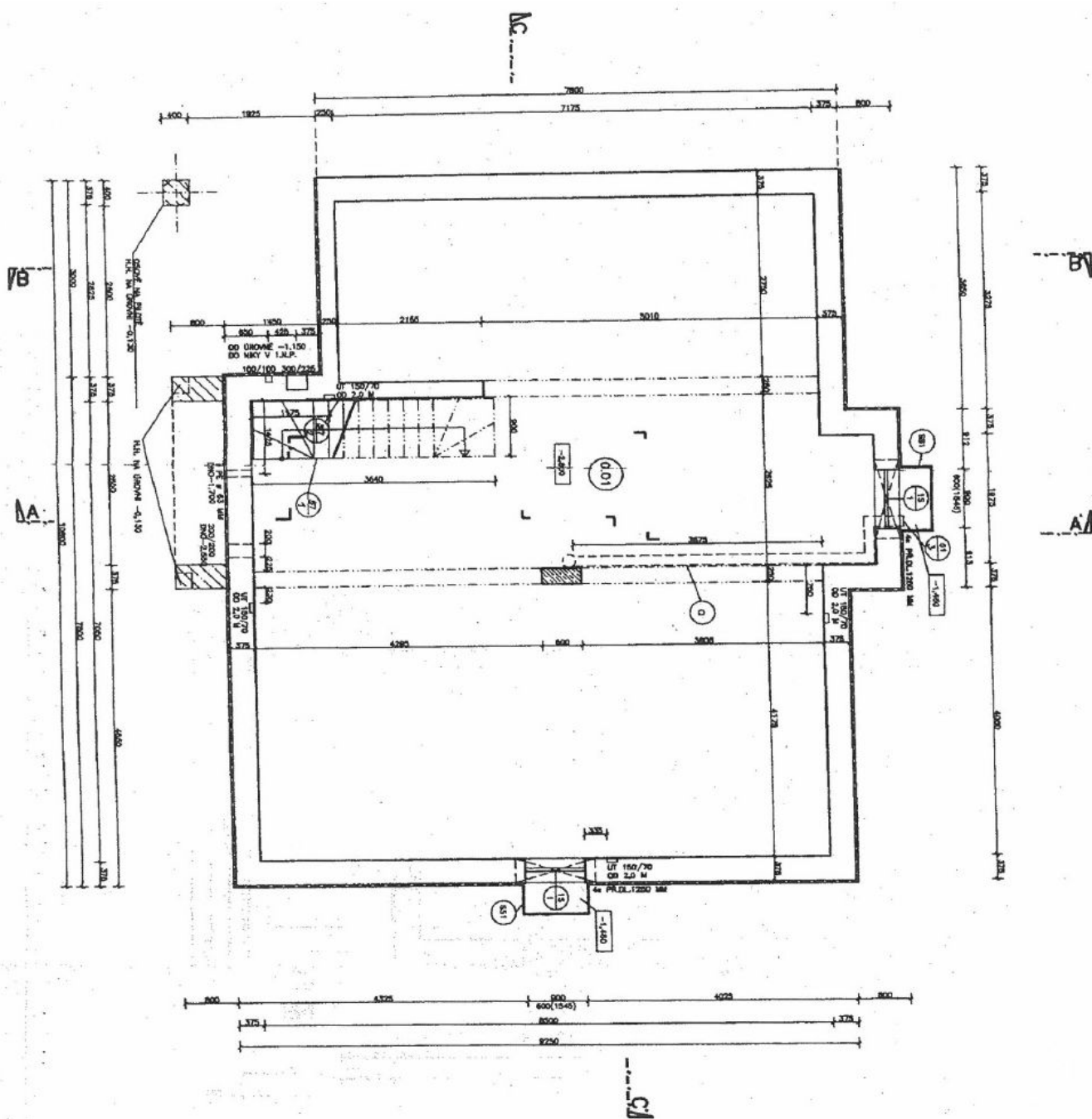
234 m<sup>2</sup>, Prague 6, Nebušice, V Oblouku



# House Four-bedroom (5+1)

Sold

234 m<sup>2</sup>, Prague 6, Nebušice, V Oblouku



## House Four-bedroom (5+1)

Sold

234 m<sup>2</sup>, Prague 6, Nebušice, V Oblouku

