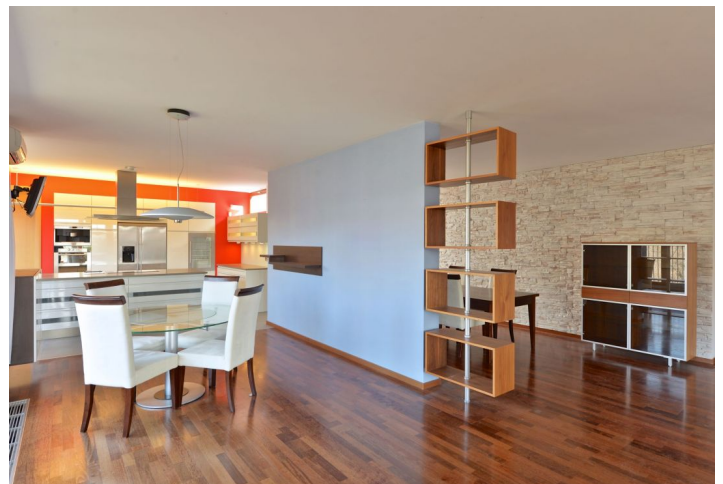


Apartment Four-bedroom (5+kk)

Rented

336 m², Prague 10, Vršovice, Vršovická

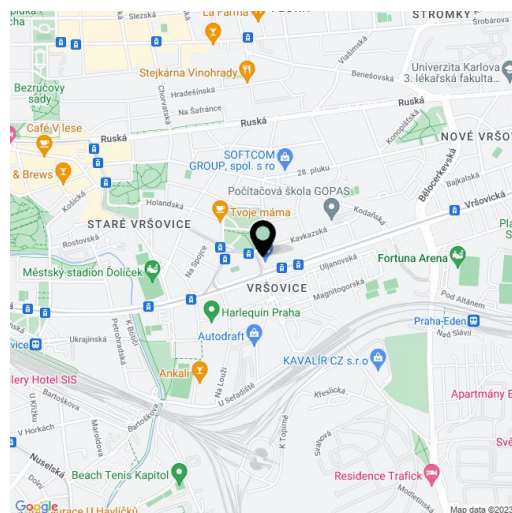


Apartment Four-bedroom (5+kk)

Rented

336 m², Prague 10, Vršovice, Vršovická

Total area	411 m ²
Floor area*	336 m ²
Terrace	75 m ²
Parking	Double garage.
Garage	Yes
Cellar	Yes
PENB	G
Reference number	20097
Available from	Immediately



* Area of the unit according to the Civil Code. The area consists of the sum total area of the entire unit bounded by perimeter walls.

Spacious high standard fully air-conditioned 4-bedroom 3-bathroom flat with 75 m² of terraces and green views, on the seventh floor with lift in a modern development on the Vinohrady and Vršovice divide. Conveniently located in the immediate vicinity of the Havlíčkovy sady park, with the Botič stream, children's playground and tennis court round the corner.

The interior features a huge open space (77 m²) incl. living room, dining area, a fully fitted and equipped kitchen, inner roofless patio, and access to the terrace offering views of the park and vineyards. There are three separate bedrooms, an office (or fourth bedroom), four fitted walk-in closets, two en-suite bathrooms (bath tub, walk-in shower, toilet), full bathroom, and hall. The entrance area includes a lift directly to the flat, a fitted walk-in closet, built-in wardrobes, guest toilet, and laundry room.

Pantry, solid wood parquet floors, bamboo floors, French windows, security entry door, blinds, central switch, TVs, Internet, satellite connection, alarm, audio entry phone, cellar, storage room off the terrace. Can be partly furnished or unfurnished. Lock-up garage for two cars included. The building amenities include security and camera surveillance system, there is fitness center, swimming pool, sauna, supermarket, and a quality restaurant. Common building charges, utilities, security and parking approximately CZK 15,000 per month. Interior: 336 m². Terraces: 75 m².