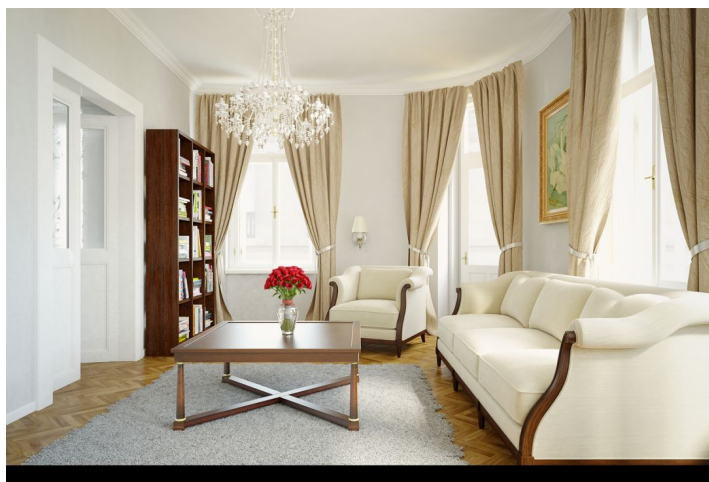
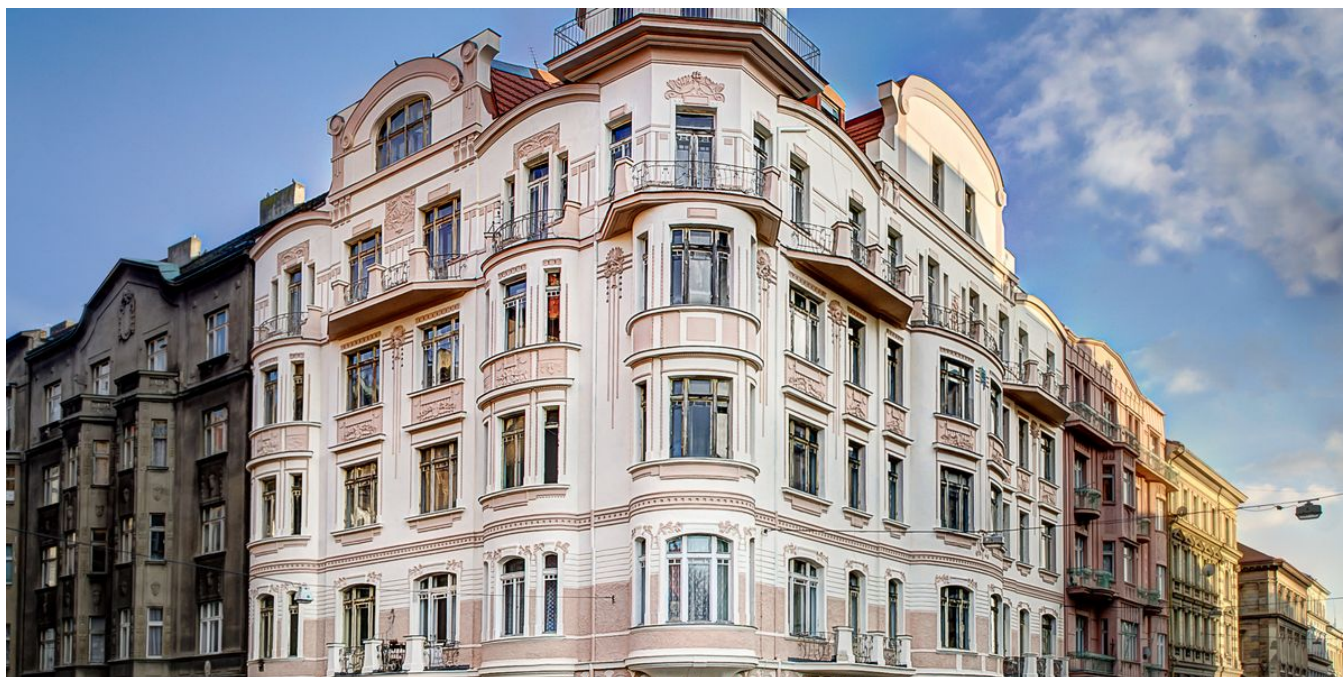


## Apartment One-bedroom (2+1)

Sold

50 m<sup>2</sup>, Prague 5, Smíchov, Zborovská



## Apartment One-bedroom (2+1)

Sold

50 m<sup>2</sup>, Prague 5, Smíchov, Zborovská

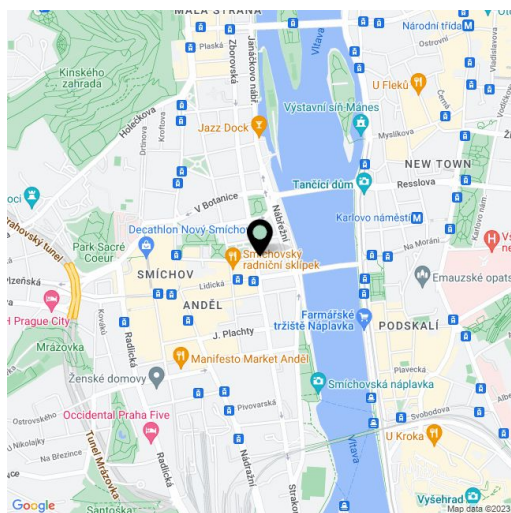
Total area	53 m <sup>2</sup>
Floor area*	50 m <sup>2</sup>
Balcony	3 m <sup>2</sup>
Parking	-
Cellar	Yes
PENB	G
Reference number	20074

Newly renovated one-bedroom apartment with balcony and bay windows boasting pleasant views of the park in the adjacent square. Located on the 2nd floor of a lovely apartment building after a complete reconstruction on the corner of Zborovská and Pecháčkova streets, in an attractive residential area of Smíchov just a few minutes walk from Anděl and the Vltava riverbank. Completion is scheduled for winter 2015.

The layout consists of an entrance hall, living room, separate kitchen with dining area, bedroom with balcony, and double access bathroom with tub and toilet. **Quality equipment** will feature **oak parquet flooring**, Hermes Aurelia and Pamesa Ceramica tiles, new casement windows with double insulation glass, preserved original features such as **stucco ceilings**, floor heating in all rooms, Riho, Laufen or Hansgrohe bathroom fittings, wood interior doors and security entry door. The purchase price includes a **cellar**, there is also storage space and a room for bicycles available in the house.

Location benefits from full amenities, tram stop and metro B station within walking distance. Nearby you will find a number of cafes and restaurants, a gym, and the Nový Smíchov shopping center with cinema.

Interior 50.1 m<sup>2</sup>, balcony 2.5 m<sup>2</sup>, cellar 2 m<sup>2</sup>.

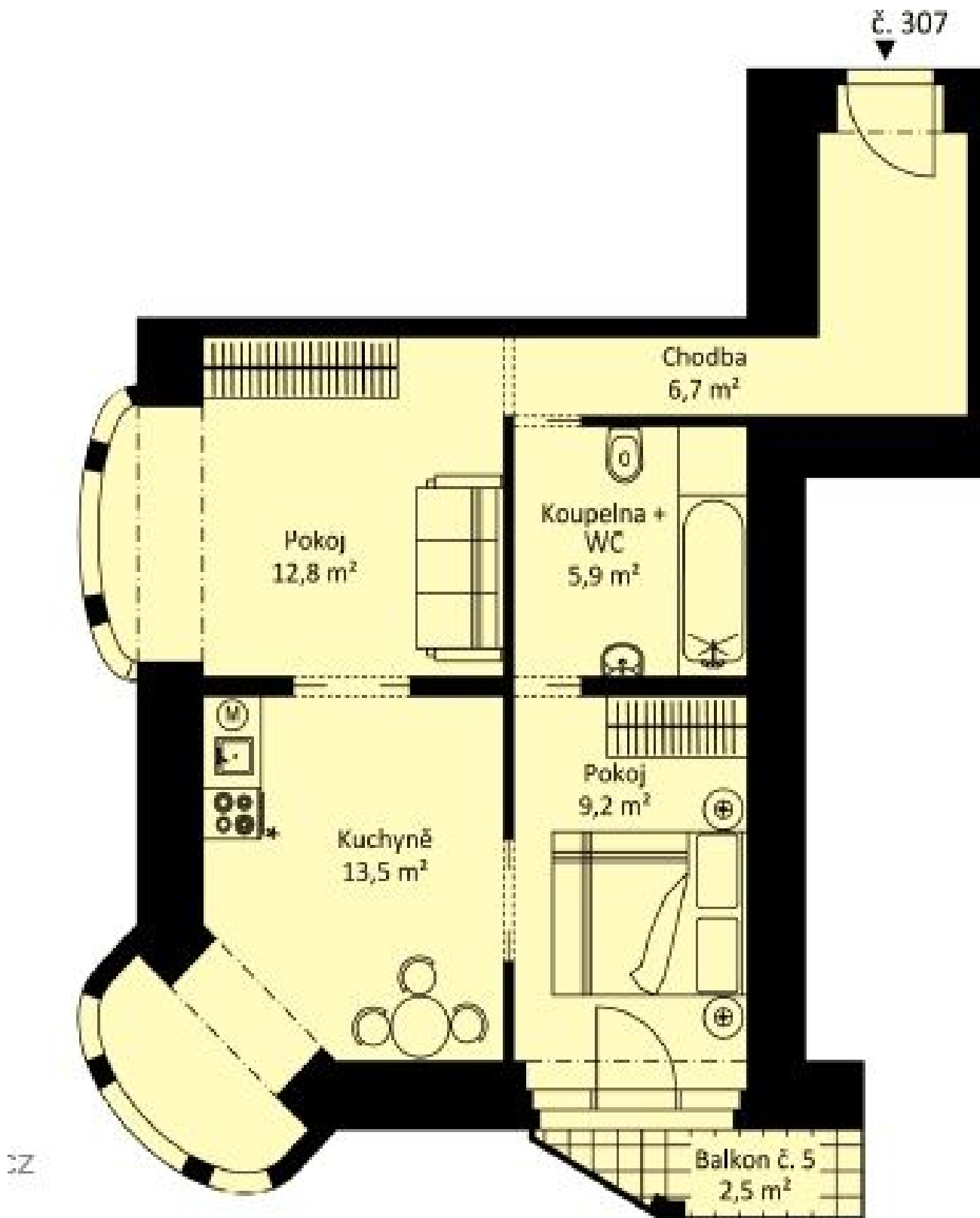


\* Area of the unit according to the Civil Code. The area consists of the sum total area of the entire unit bounded by perimeter walls.

## Apartment One-bedroom (2+1)

Sold

50 m<sup>2</sup>, Prague 5, Smíchov, Zborovská



32