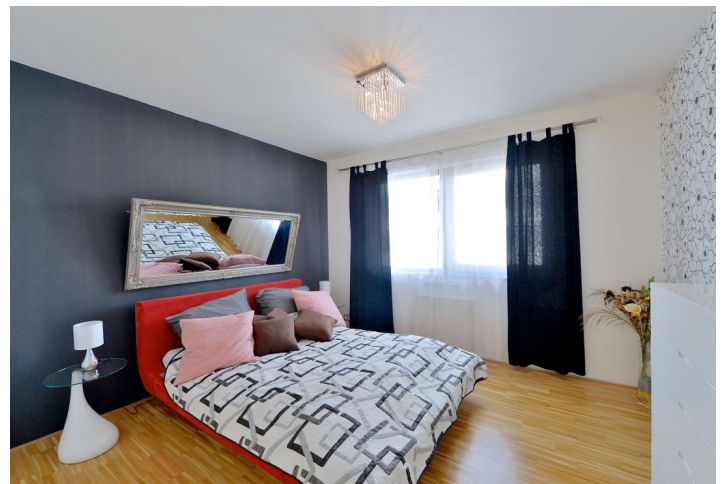


Apartment Two-bedroom (3+kk)

Ask for price

119 m², Prague 8, Karlín, Rohanské nábřeží



Apartment Two-bedroom (3+kk)

Ask for price

119 m², Prague 8, Karlín, Rohanské nábřeží

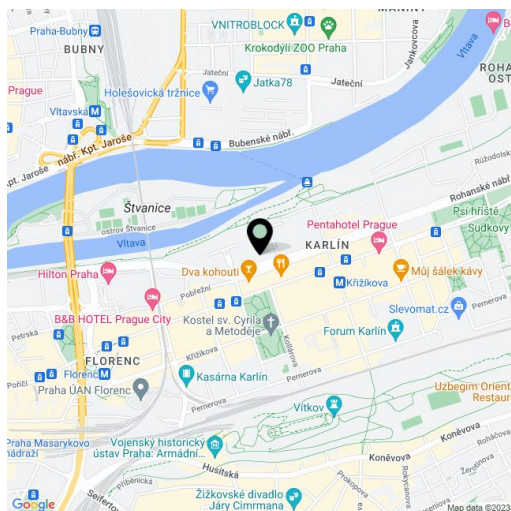
| | |
|------------------|--------------------|
| Total area | 119 m ² |
| Parking | 900 000 |
| Garage | Yes |
| Cellar | Yes |
| PENB | G |
| Reference number | 20071 |

Quality equipped and designed by renowned architect Barbora Škorpilová, this 2-bedroom, 2-bathroom apartment on the 3rd floor of a modern residential complex by Safer Hájek Architects benefits from an on-site parking garage and services such as 24-hour reception, shops, café and a Japanese garden. Convenient location near the Vltava riverbank, in the middle of a swiftly developing area of Prague 8 – Karlín, just a stone's throw away from the Křižíkova metro station and main bus station.

The apartment consists of a living room with an open-plan kitchen, dining zone and French windows, 2 bedrooms (1 bedroom with en-suite bathroom), 2nd bathroom, additional WC and storage room. The stylish interior features wood flooring and tiles, wood windows, designer elements including lighting, bathroom equipment and a custom made kitchen. **2 garage parking spaces** and a cellar included in the purchase price.

Situated within easy reach of the center, with full amenities, just a few minutes walk from the Karlínské náměstí Square or Vítkov Hill. Tennis courts, number of fitness clubs, squash and restaurants nearby.

Interior 118.5 m², cellar 5.5 m².

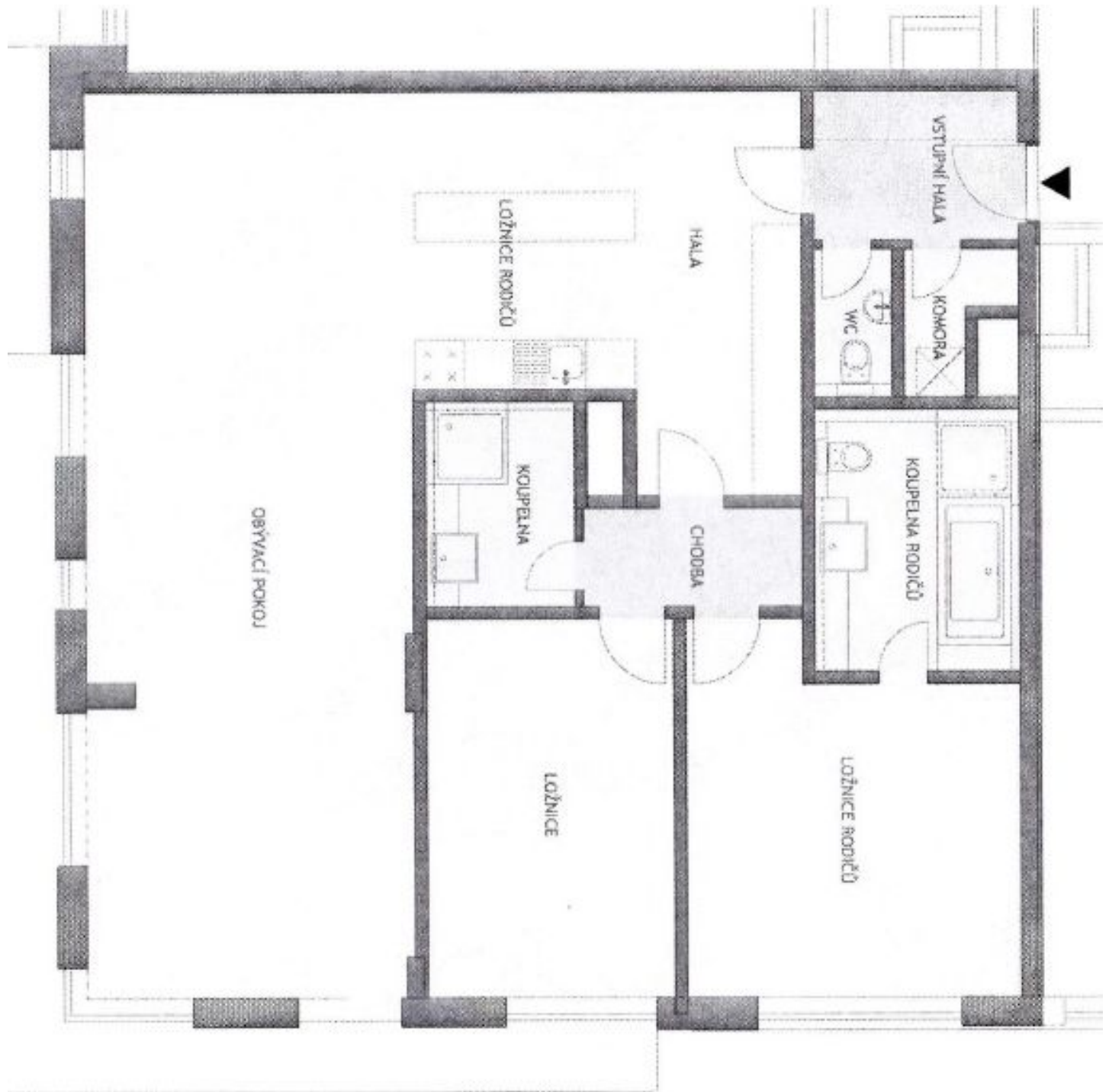


* Area of the unit according to the Civil Code. The area consists of the sum total area of the entire unit bounded by perimeter walls.

Apartment Two-bedroom (3+kk)

Ask for price

119 m², Prague 8, Karlín, Rohanské nábřeží



Apartment Two-bedroom (3+kk)

Ask for price

119 m², Prague 8, Karlín, Rohanské nábřeží

| | |
|--------------------------|---------------------------|
| YSTUPNÍ HALA | 4,9m ² |
| HALA | 9,9m ² |
| CHODBA | 3,6m ² |
| WC | 1,5m ² |
| KOUPELNA | 4,1m ² |
| KOMORA | 1,8m ² |
| KOUPELNA RODIČŮ | 6,9m ² |
| LOŽNICE | 13,9m ² |
| LOŽNICE RODIČŮ | 16,8m ² |
| KUCHYŇSKÝ KOUT | 6,4m ² |
| OBÝVACÍ POKOJ | 48,7m ² |
| ČISTÁ PLOCHA BYTU | 118,5m² |
| SKLEP č.69 | 5,5m ² |
| CELKEM | 124,0m² |