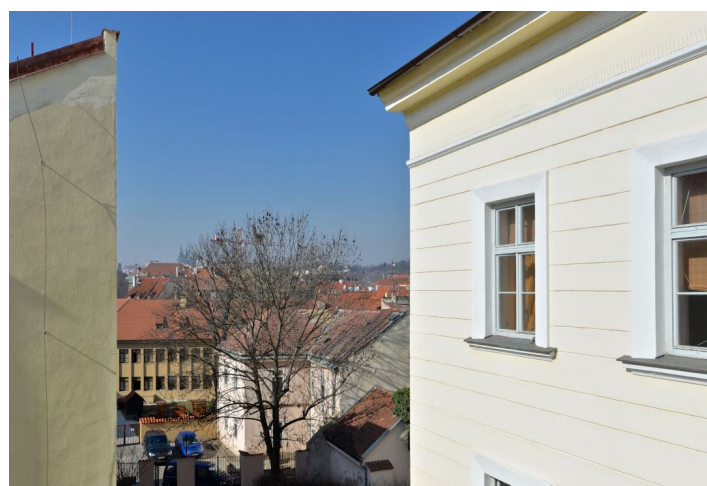
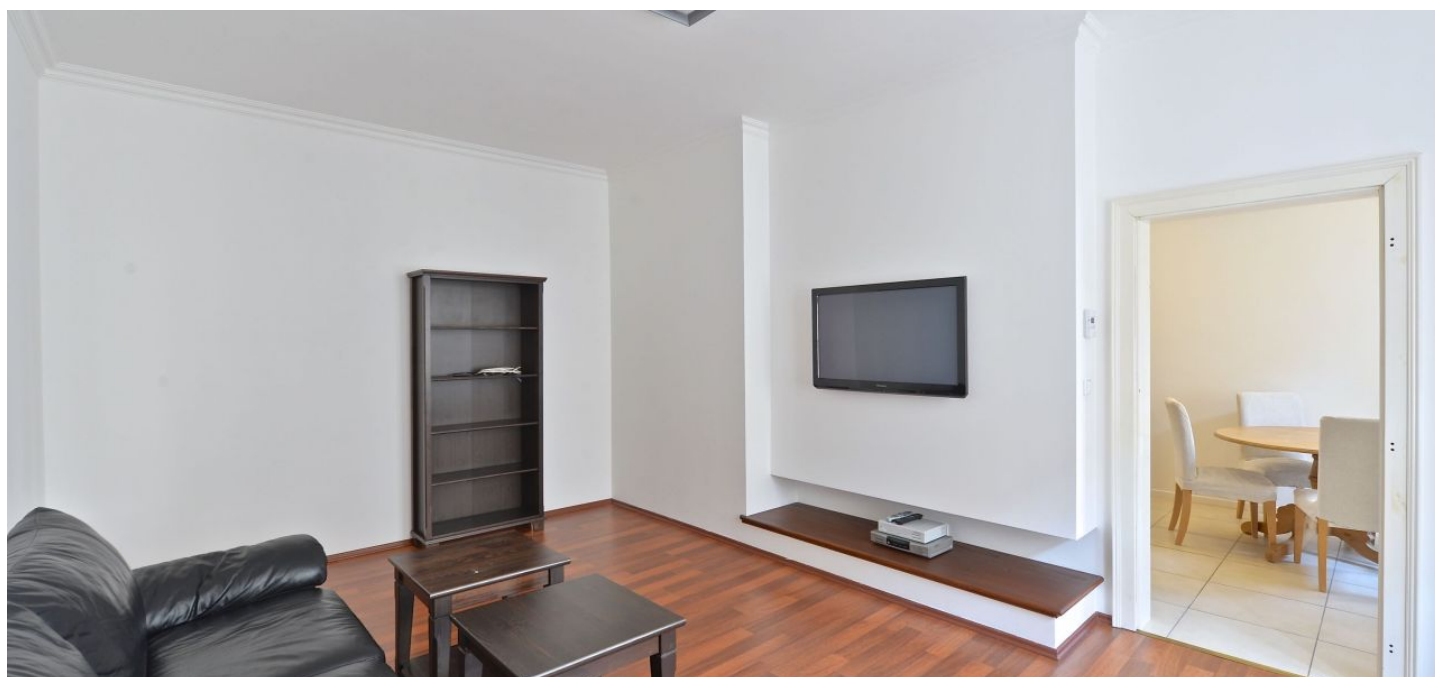


## Apartment One-bedroom (2+1)

Rented

70 m<sup>2</sup>, Prague 1, Staré Město, Haštalská



## Apartment One-bedroom (2+1)

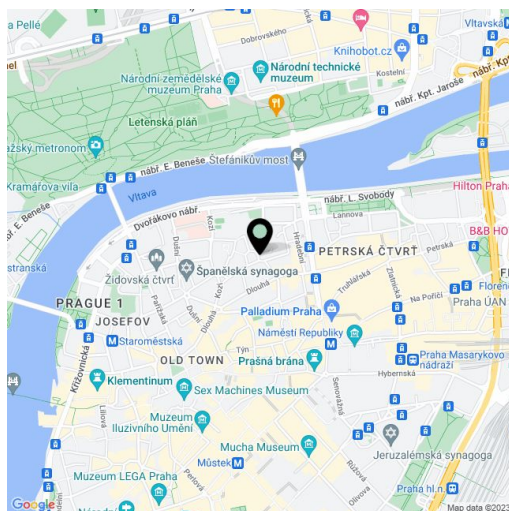
**Rented**70 m<sup>2</sup>, Prague 1, Staré Město, Haštalská

Total area	70 m <sup>2</sup>
Parking	-
Cellar	-
PENB	G
Reference number	19903
Available from	Immediately

Fully refurbished furnished 1-bedroom flat on the third floor of a renovated residential building with a lift just minutes from the Vltava riverbank. Conveniently centrally located in a quiet street a short walk from the Old Town Square and Náměstí Republiky metro station, with full amenities in the area.

The interior includes one bedroom with built-in storage, a fully fitted walk-through kitchen with dining area, living room, shower bathroom with toilet, a guest toilet, and a spacious entry hall.

View of the Prague Castle, preserved original features, large windows, built-in wardrobes, floating floors and tiles, security entry door, gas boiler, washing machine, dishwasher, combination oven, coffee machine, vacuum cleaner, iron and board, bed linen, dishes and kitchenware, TV, audio entry phone. Common building charges and water CZK 500/person/month. Internet connection, gas and electricity approximately CZK 3500 per month. Available from July 2016.



\* Area of the unit according to the Civil Code. The area consists of the sum total area of the entire unit bounded by perimeter walls.