

## Apartment Three-bedroom (4+kk)

Rented

132 m<sup>2</sup>, Prague 10, Malešice, Prorektorská



## Apartment Three-bedroom (4+kk)

Rented

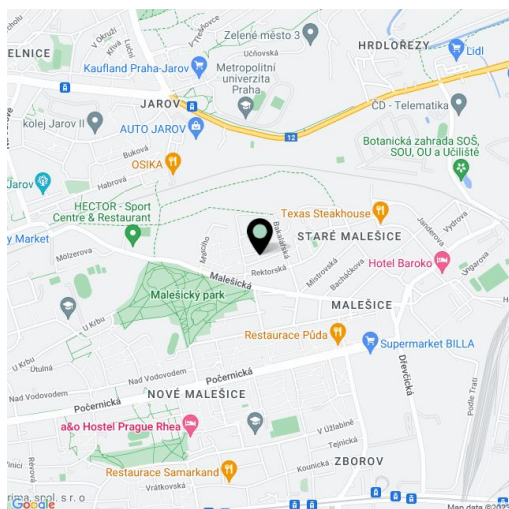
132 m<sup>2</sup>, Prague 10, Malešice, Prorektorská

Total area	206 m <sup>2</sup>
Floor area*	132 m <sup>2</sup>
Terrace	74 m <sup>2</sup>
Parking	Garage.
Garage	Yes
Cellar	-
PENB	G
Reference number	19882
Available from	Immediately

Boasting far reaching panoramic views from a 37 m<sup>2</sup> roof terrace, this unfurnished 3-bedroom 2-bathroom flat with two more terraces is on the third floor of a modern building with a lift and parking. Located in a quiet residential area of Malešice, within easy reach of full amenities and with quick access to the city center.

The flat includes a spacious air-conditioned living room with dining area, a fully fitted open kitchen and access to both terraces, air-conditioned master bedroom with an en-suite bathroom (walk-in shower, toilet) and terrace access, two more bedrooms, walk-in closet, family bathroom (tub, walk-in shower), toilet, and storage room.

Wooden floors, tiles, security entry door, built-in wardrobes and storage, dishwasher, microwave oven, alarm, audio entry phone. Garage included. Common building charges and utilities CZK 7000 per month. Electricity will be transferred to the tenant (approximate monthly amount: CZK 1600).

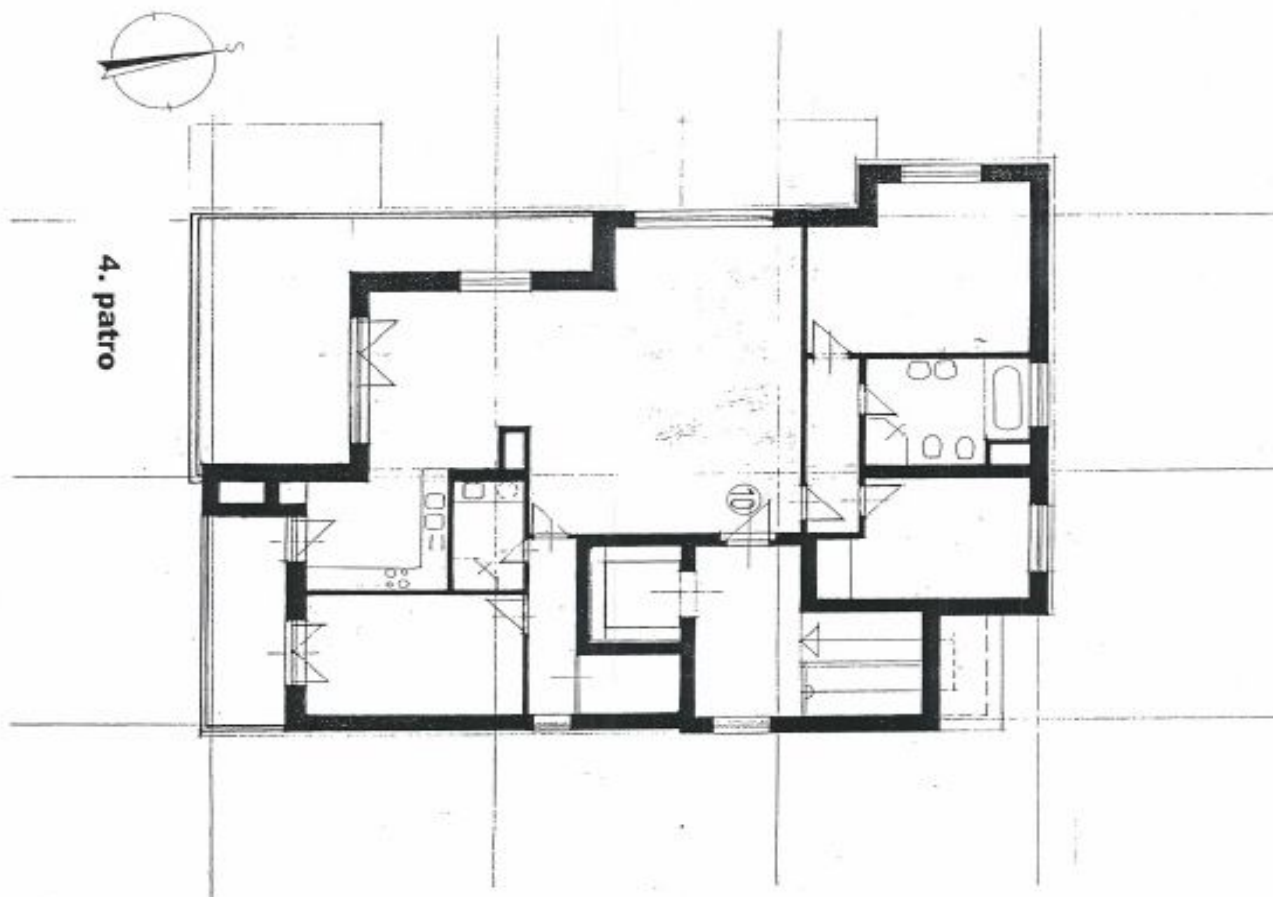


\* Area of the unit according to the Civil Code. The area consists of the sum total area of the entire unit bounded by perimeter walls.

# Apartment Three-bedroom (4+kk)

Rented

132 m², Prague 10, Malešice, Prorektorská



Byt č. 10		
průhlední	5,36	
Obý.v.,pokoj	53,60	
pokoj	18,20	
koupelna	8,17	
ložnice	11,52	
šatna	3,59	
předstín	8,02	
koupelna	4,56	
pokoj	13,58	
kuchyně	8,90	
celkem	9,40	132,52
balkon	26,01	
terasa		