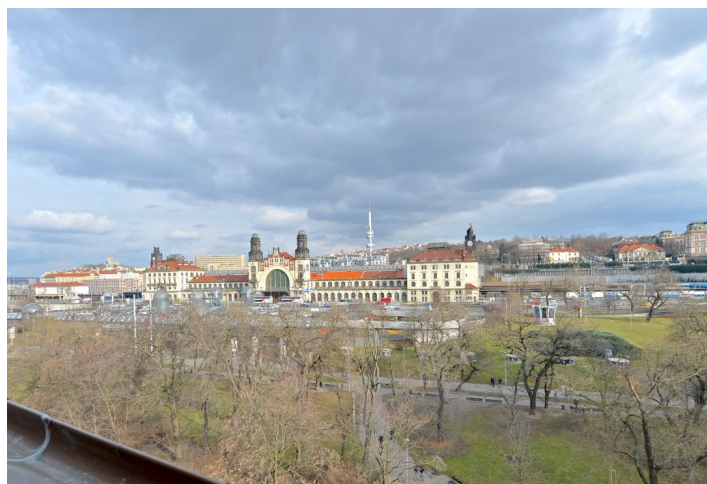
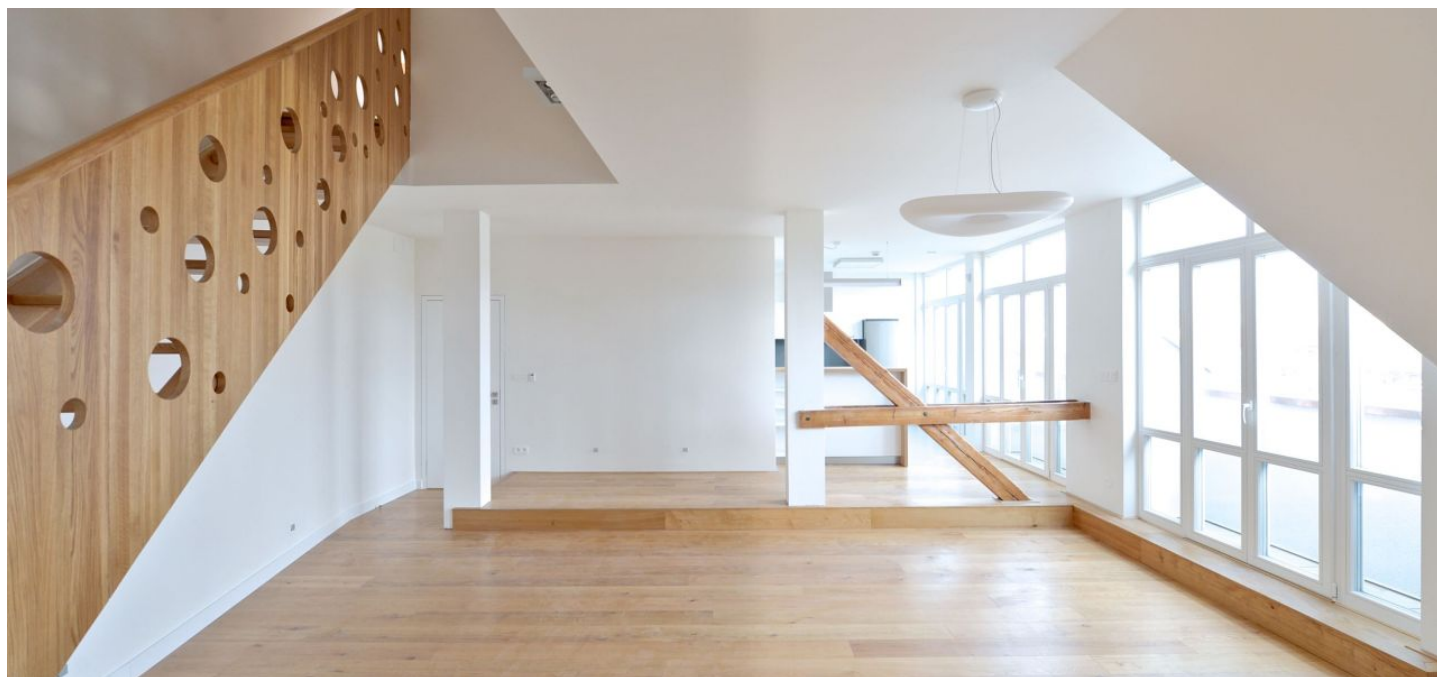


## Apartment One-bedroom (2+kk)

Rented

124 m<sup>2</sup>, Prague 1, Nové Město, Opletalova



# Apartment One-bedroom (2+kk)

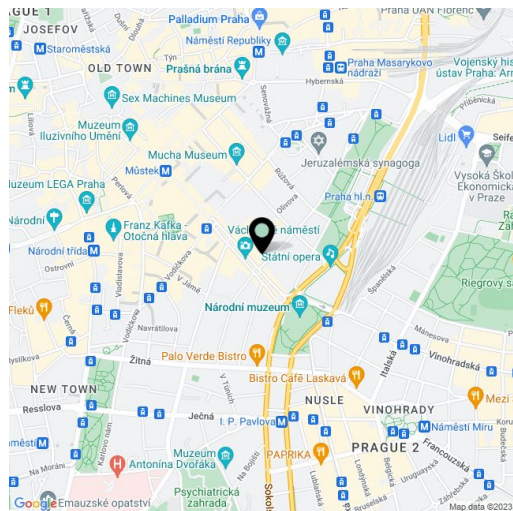
**Rented**124 m<sup>2</sup>, Prague 1, Nové Město, Opletalova

<b>Total area</b>	126 m <sup>2</sup>
<b>Floor area*</b>	124 m <sup>2</sup>
<b>Balcony</b>	2 m <sup>2</sup>
<b>Parking</b>	Courtyard parking.
<b>Cellar</b>	-
<b>PENB</b>	G
<b>Reference number</b>	19836
<b>Available from</b>	Immediately

**Brand new attractive 1-bedroom split-level attic flat with views of the Prague Castle and the Old Town on one side, and Vrchlického sady Park and the historic building of the Main Railway Station on the other. Situated on the top fifth floor of a renovated Functionalist building with a lift, reception and parking. Well located in the very center of Prague just a minute walk from Wenceslas Square with immediate access to all three Prague metro lines.**

The lower level features a spacious living room with dining area and a fully fitted open kitchen, a walk-in closet, toilet, and entry hall. The upper floor includes one bedroom with atelier windows, a walk-in closet, and bathroom with tub and toilet.

High standard materials, air-conditioning, solid wood floors and staircase, tiles, floor heating, security entry door, French windows with narrow balconies, dishwasher, bidet showers, alarm that can be connected to a security agency. Courtyard parking can be arranged at an additional fee. Common building charges and utilities are billed separately.



\* Area of the unit according to the Civil Code. The area consists of the sum total area of the entire unit bounded by perimeter walls.