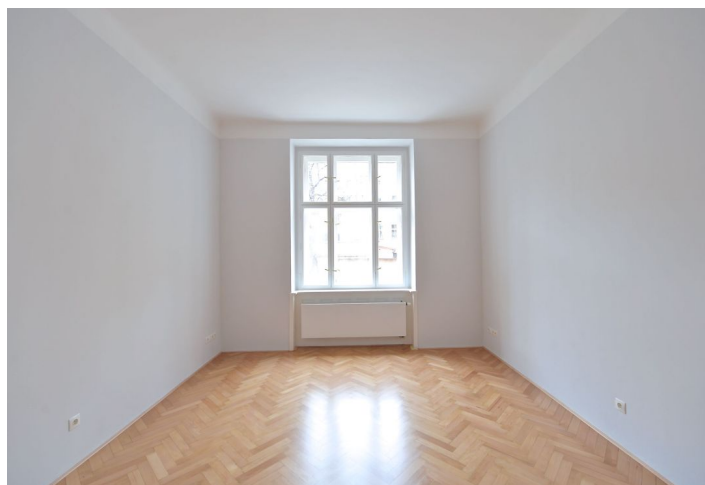


Apartment Two-bedroom (3+1)

Rented

104 m², Prague 7, Holešovice, Letohradská



Apartment Two-bedroom (3+1)

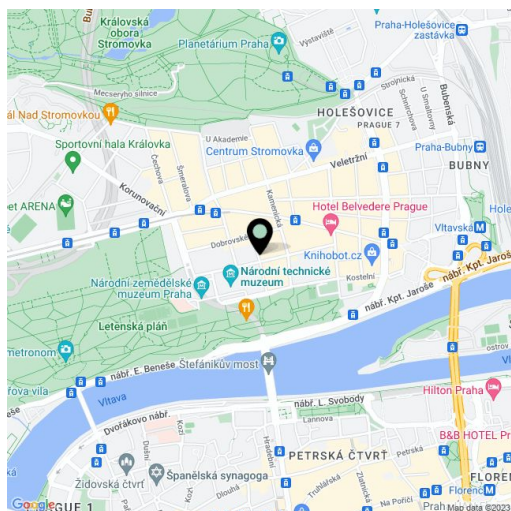
Rented104 m², Prague 7, Holešovice, Letohradská

| | |
|------------------|--------------------|
| Total area | 104 m ² |
| Parking | - |
| Cellar | - |
| PENB | G |
| Reference number | 19712 |
| Available from | Immediately |

Completely newly reconstructed unfurnished 2-bedroom flat situated on the upper ground floor of a traditional building with a lift. Located in a quiet street just steps from the Letná park and within walking distance of the Stromovka park, the Prague Castle and the city center. Prime location with quick transportation connections (trams to Vltavská and Hradčanská metro stations), convenient to the Prague 6 international schools and the airport.

The interior includes living room, a fully fitted eat-in kitchen, two bedrooms facing the courtyard, bathroom with tub and toilet, a guest toilet, a spacious walk-in closet, utility room, and a large central entry hall.

Preserved original details, high ceilings, large windows, new and renovated solid wood parquet floors, tiles, security entry door, new kitchen, gas boiler, decorative tile stove, dishwasher, UPC connection, telephone line, audio entry phone. The flat is situated high above the street level. Deposit for common building charges and water CZK 600/person/month. Gas and electricity will be transferred to the tenant.

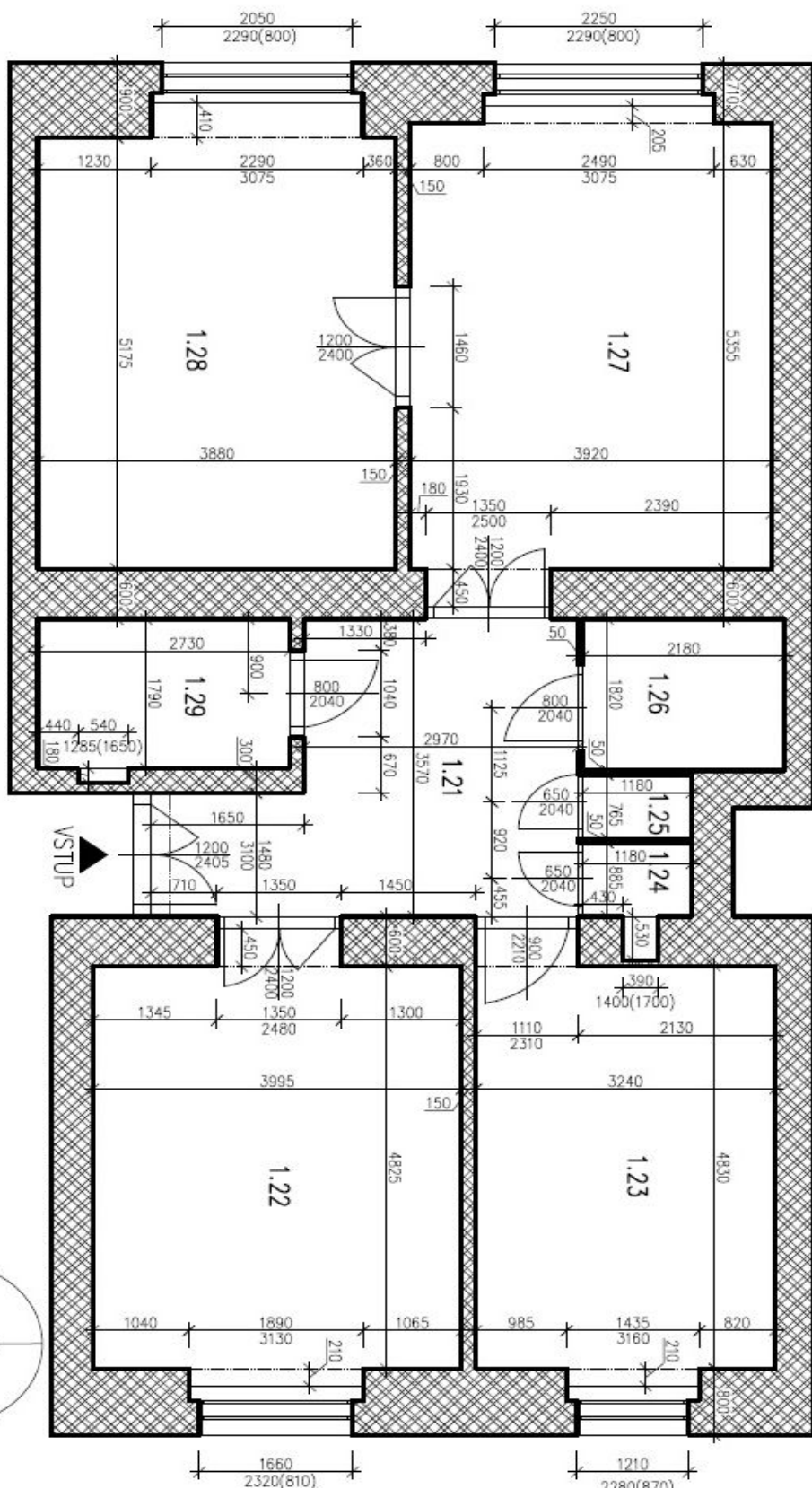


* Area of the unit according to the Civil Code. The area consists of the sum total area of the entire unit bounded by perimeter walls.

Apartment Two-bedroom (3+1)

Rented

104 m², Prague 7, Holešovice, Letohradská



TABULKA MÍSTNOSTI

| OZNACENÍ | ÚČEL MÍSTNOSTI | PLOCHA [m ²] |
|----------|--------------------|--------------------------|
| 1.21 | CHODBA | 13,05 |
| 1.22 | POKOUJ | 20,28 |
| 1.23 | POKOUJ | 16,45 |
| 1.24 | WC | 1,05 |
| 1.25 | TECHNICKÁ MÍSTNOST | 0,90 |
| 1.26 | KOUPELNA | 3,97 |
| 1.27 | OBÝVAČÍ POKOUJ | 22,11 |
| 1.28 | KUCHYŇ | 21,02 |
| 1.29 | ŠATNA | 4,89 |

UŽITKOVÁ PLOCHA CELKEM: 103,72 m²