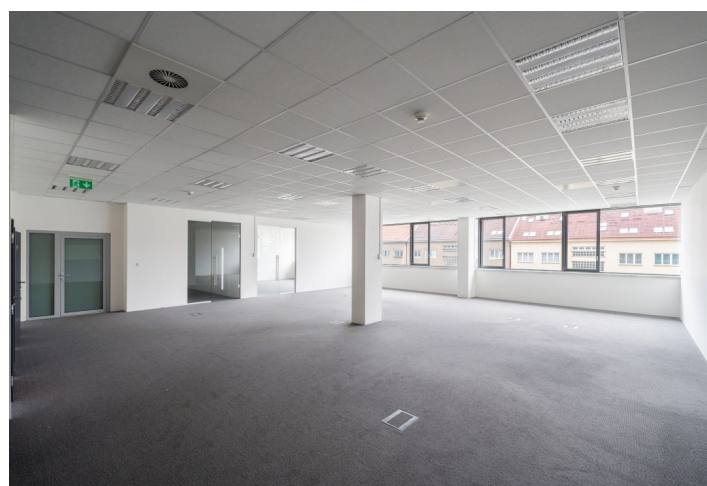
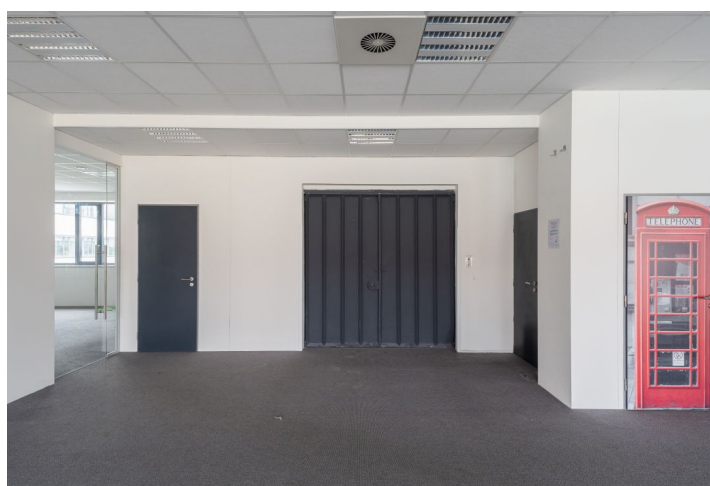
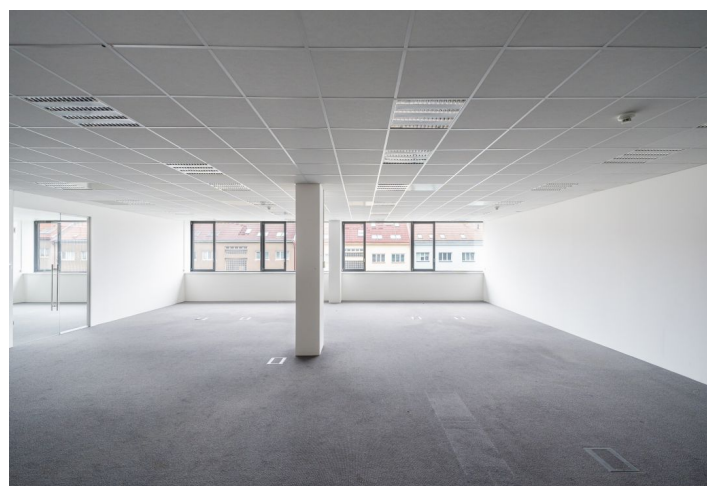


Office space

€ 13.50 / m<sup>2</sup> | CZK 338 / m<sup>2</sup>

Prague 4, Michle, Budějovická



## Office space

€ 13.50 / m<sup>2</sup> | CZK 338 / m<sup>2</sup>

Prague 4, Michle, Budějovická

Service price	130 CZK monthly per m <sup>2</sup>
Available area	242 m <sup>2</sup>
Cellar	-
Parking	EUR 95 / ps / month
PENB	G
Reference number	19699

Office space for lease on the 3rd floor in a complex of office buildings located in the administrative and business area of Prague 4 and consists of two wings with a green atrium in between with an area of 1000 m<sup>2</sup>, suitable for relaxation. In close proximity is one of the newest shopping centers - Arcade Pankrac and other services such as restaurants, hotels, conference centers, banks, post office, school and sports.

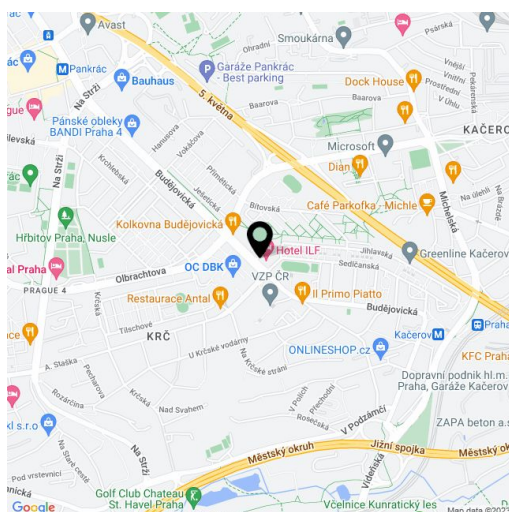
**Location:**

Outstanding accessibility by car and public transportation - within walking distance of metro station Pankrác (line C) a Budějovická (line C), right on exit of the North-South Highway.

**Features and Services:**

- Ventilation and air-conditioning to regulate temperature
- Raised floors with floor boxes (1 box per 10 m<sup>2</sup> of office space)
- 3 m ceiling clear height
- Suspended ceilings with lighting
- 24/7 security and reception service
- Magnetic card access system
- Preparation for the kitchen (water supply and waste)
- Openable windows
- Exterior window electric
- Blinds on the southwest façade of the building
- Possibility of placing tenant logos

Rental and service charges listed without VAT. Lessee pays no commission.



Office space

Prague 4, Michle, Budějovická

€ 13.50 / m<sup>2</sup> | CZK 338 / m<sup>2</sup>

