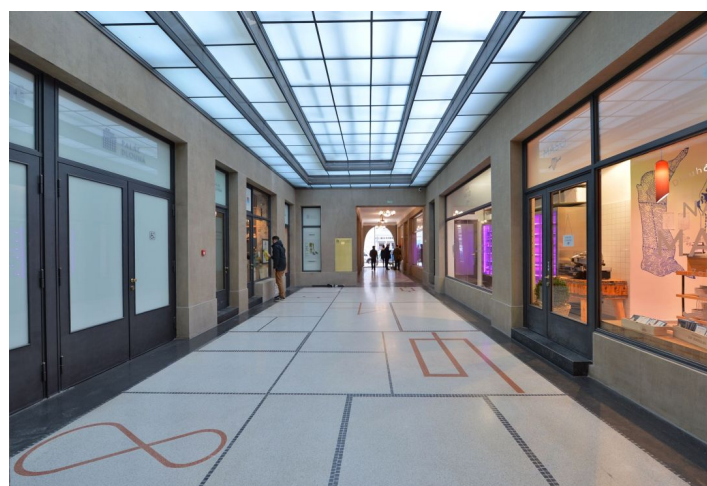
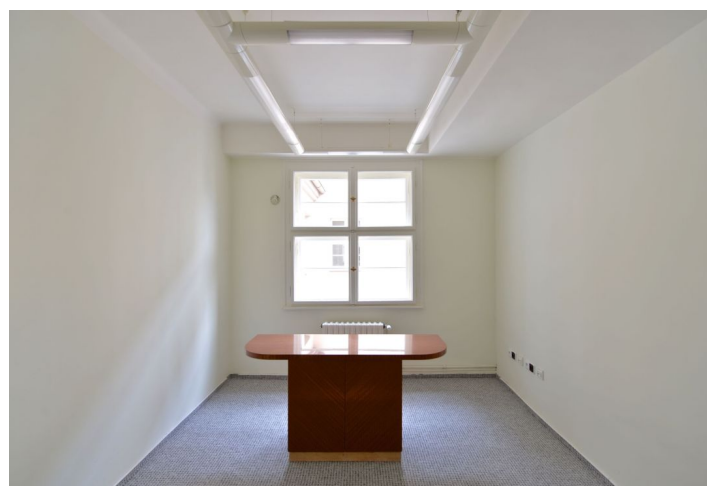


## Office space

Rented

Prague 1, Staré Město, Dlouhá



## Office space

Rented

Prague 1, Staré Město, Dlouhá

Available area	95 m <sup>2</sup>
Cellar	-
Terrace	14 m <sup>2</sup>
Parking	-
PENB	G
Reference number	19634

Office premises with two terraces on the 6th floor of a newly reconstructed multifunctional building with commercial, office and residential spaces, located in the heart of Old Town.

**Location:**

Good accessibility by all means of transport – tram, bus stops and metro station Náměstí Republiky (line B) just a few minutes walk away. The area is served by a number of financial and business institutions, shops and restaurants.

**Features and Services:**

The office space is bright, with wiring and alarm system available. 2 entrances halls, kitchenette, storage room, bathroom with WC, and 2 toilets. There are 2 entrances into the premises (by stairs or by lift).

Rental and service charges listed without VAT. Lessee pays no commission.

