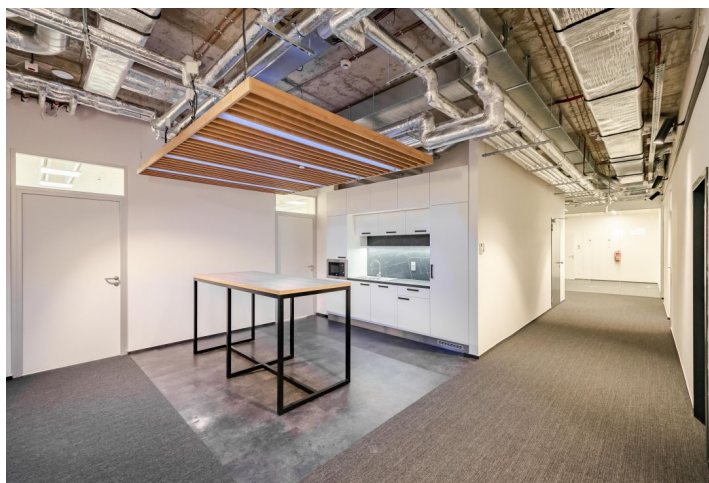


## Office building

Ask for price

Prague 7, Holešovice, Argentinská



## Office building

**Ask for price**

Prague 7, Holešovice, Argentinská

Total building area	6 014 m <sup>2</sup>
Tenant consumption	—
Parking	2 700 CZK
Parking service charges	—
Parking ratio	—
Certification	—
PENB	B
Reference number	19307

**New office building located on the corner of busy Argentinská Street. The project offers a fully flexible floor space of approximately 500 to 1,000 sq. m. with offices on each of the six above-ground floors.**

**Location:**

Very good connections to arterial roads, the Prague Ring Road, the Blanka tunnel, including access to the D1 and D8 highways. Close to the building there are multiple bus and tram stops as well as the Nádraží Holešovice metro station (line C), train station & bus stop.

**Facilities and services:**

24/7 central reception  
Magnetic card access to the building  
CCTV system monitoring the building and its surroundings  
Flexible office space  
Retail space on the ground floor  
Storage areas (limited capacity)  
Guest parking  
Ground source heat pump  
Interior blinds  
Openable windows  
Central air conditioning  
Own copy centrum

Rental and service charges listed without VAT. Lessee pays no commission.



