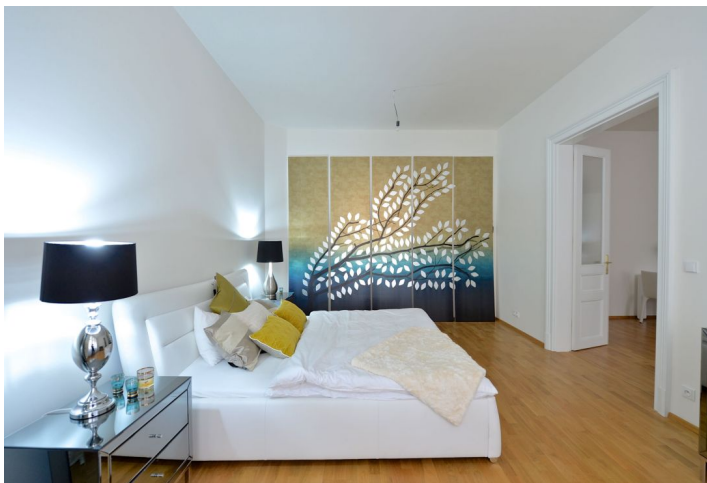


## Apartment Two-bedroom (3+1)

Sold

108 m<sup>2</sup>, Brno-město, Brno - střed, Biskupská

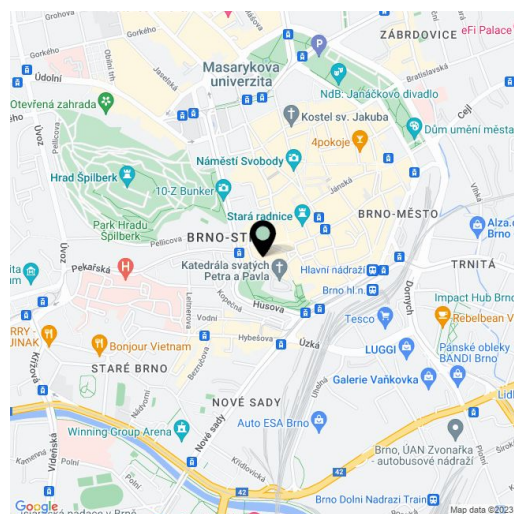


## Apartment Two-bedroom (3+1)

Sold

108 m<sup>2</sup>, Brno-město, Brno - střed, Biskupská

Total area	108 m <sup>2</sup>
Parking	Yes
Cellar	Yes
PENB	G
Reference number	19234



\* Area of the unit according to the Civil Code. The area consists of the sum total area of the entire unit bounded by perimeter walls.

Unique opportunity to live in an Art Nouveau residence in the heart of Brno with views of the Katedrála sv. Petra a Pavla cathedral and Spilberk Castle. A complete and sensitive reconstruction, which took place in 2013 under strict supervision of the Heritage Institute, created 24 residential units that retain the elegance of the historic house.

The interior of this apartment on the first floor offers a living room, from which we can access both of the 2 bedrooms, central hall with preparation for kitchen, bathroom with bathtub, separate toilet, storage room and entrance hall.

The residence, where actor, writer and director **Hugo Haas** previously lived, offers the opportunity to purchase apartments on different floors and of different layouts from one-bedroom to two-bedroom.

One of the biggest advantages of the building is its exclusive location that boasts the unique atmosphere of **old Brno**. Next to the Cathedral and Spilberk Castle, you can find the best Brno cafes and restaurants, the Reduta and Husa na provázku theaters, and a cinema in the Velky Spalicek shopping center. A tram stop with connections to major public transport nodes is just around the corner.

**For a complete list of available units please contact our office.**

The purchase price includes VAT.

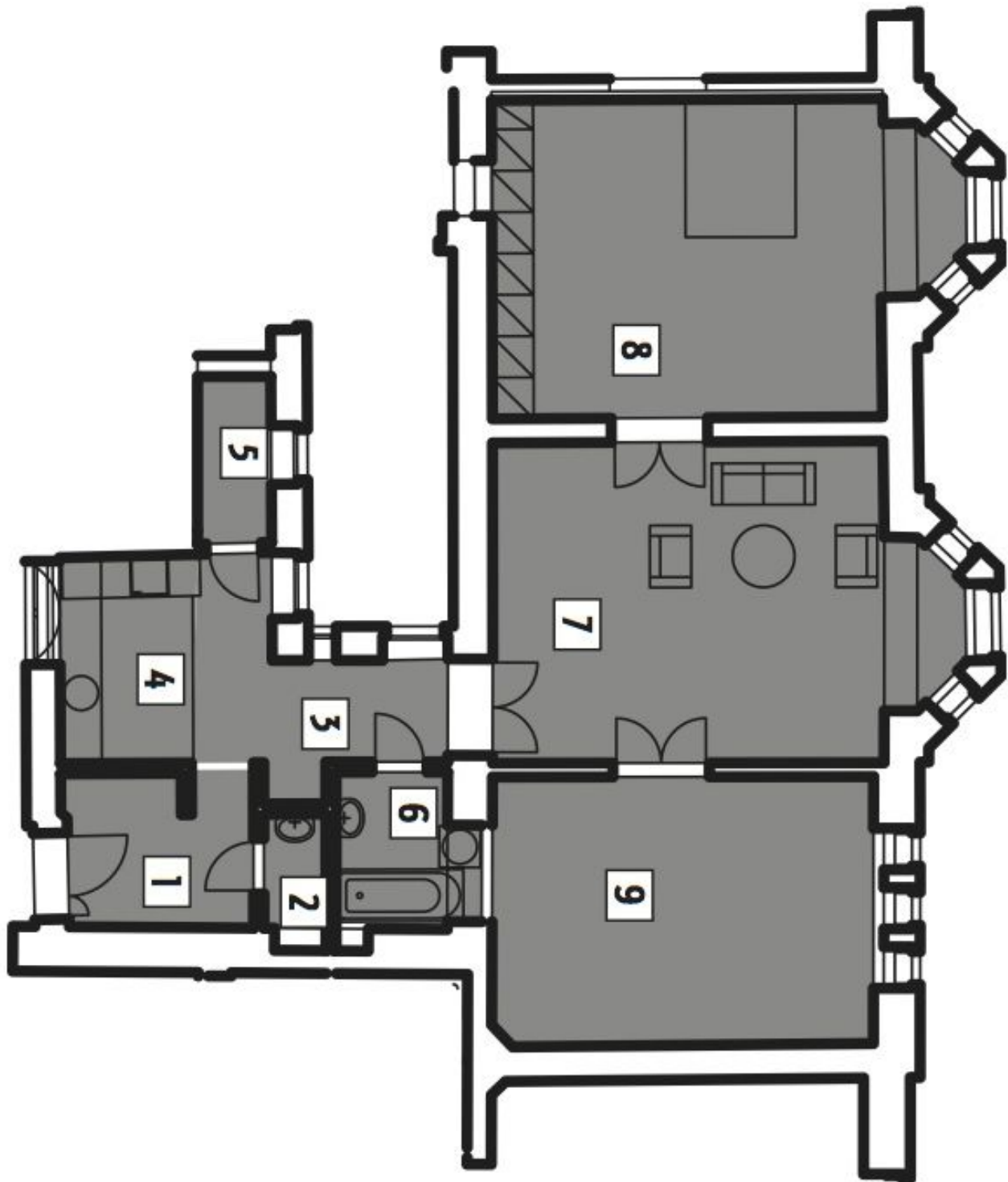
Interior 107,87 m<sup>2</sup> + cellar.

Possibility to rent a parking place in a garage situated two minutes away from the building.

## Apartment Two-bedroom (3+1)

Sold

108 m<sup>2</sup>, Brno-město, Brno - střed, Biskupská



## Apartment Two-bedroom (3+1)

Sold

108 m<sup>2</sup>, Brno-město, Brno - střed, Biskupská

