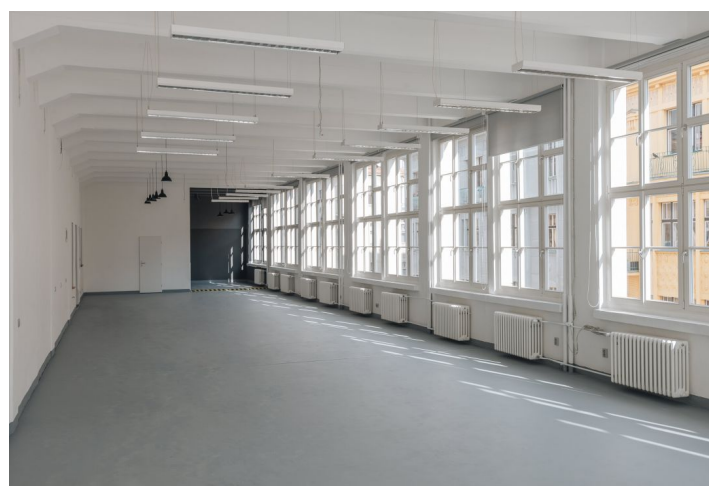


## Office space

Rented

Prague 7, Holešovice, Františka Křížka



## Office space

Rented

Prague 7, Holešovice, Františka Křížka

<b>Service price</b>	90 CZK monthly per m <sup>2</sup>
<b>Available area</b>	314 m <sup>2</sup>
<b>Cellar</b>	-
<b>Parking</b>	CZK 3 000 / ps / month
<b>PENB</b>	G
<b>Reference number</b>	19201

Unconventional office space for lease on the 1st floor of an industrial building in a location characterized by excellent civic amenities, rich cultural life and a wide range of opportunities for active recreation in the nearby Letenské sady or Stromovka Park. The space is divided into 3 rooms, a large hall, a fully equipped kitchen and smaller separate rooms. There is also a small storage room. Own sanitary facilities including shower.

**Location:**

Good transport accessibility - the Vltavská metro station (line C) is nearby and the Strossmayerovo náměstí tram stop is just a few minutes' walk from the building.

**Features and Services:**

- Central reception
- 24-hour security
- Parking in the courtyard
- Social facilities
- Kitchenette
- Elevator

Rental and service charges listed without VAT. Lessee pays no commission.

