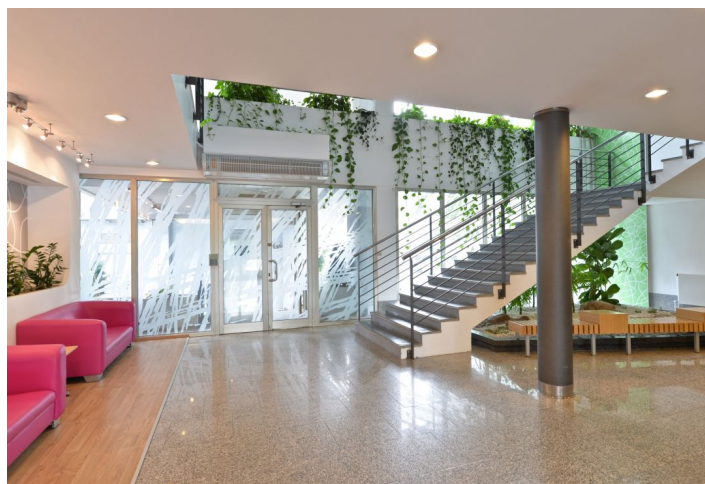
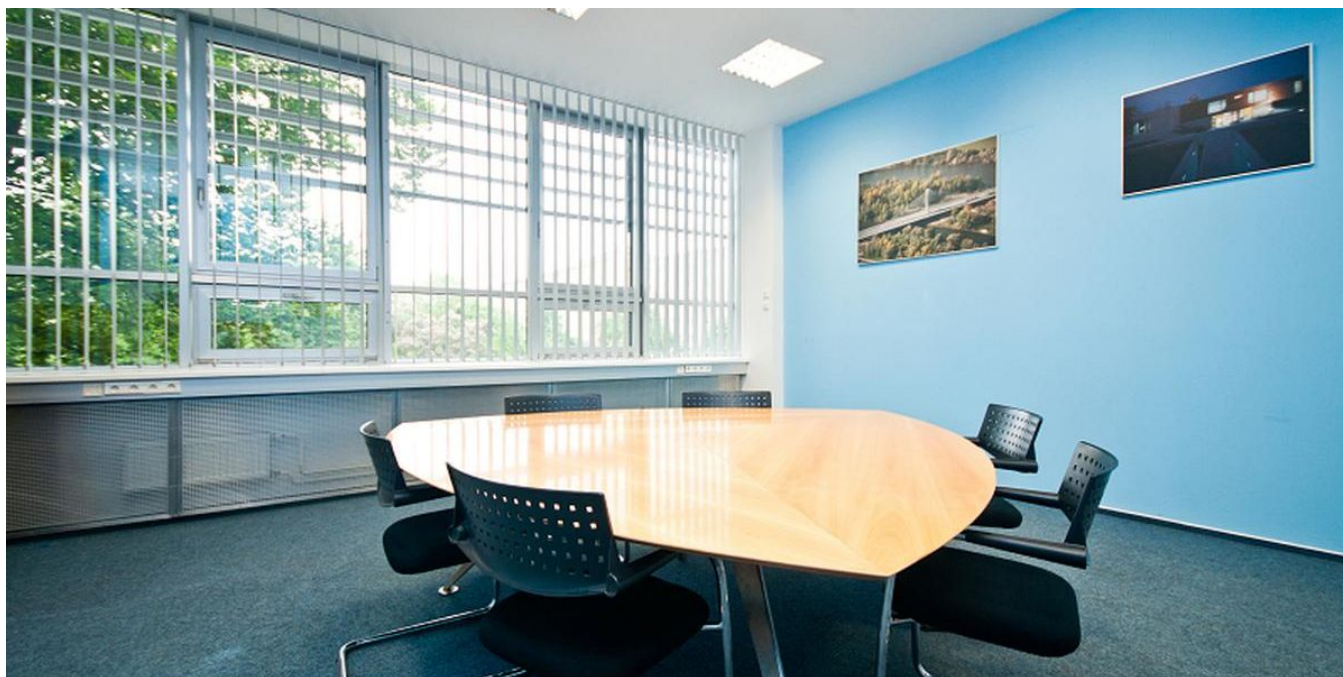


## Office space

Rented

Prague 10, Vršovice, Kubánské náměstí



## Office space

Rented

Prague 10, Vršovice, Kubánské náměstí

Service price	174 CZK monthly per m <sup>2</sup>
Available area	230 m <sup>2</sup>
Cellar	-
Parking	EUR 90 / pp / month
PENB	B
Reference number	19098

Office premises on the 2nd floor of a seven-story administrative building, with excellent parking opportunity, located on Prague 10.

**Location:**

Good accessibility by car and public transportation – in a close vicinity of tram stations, within walking distance (ca. 10 minutes) of metro station Strašnická (line A), good connection to the southern arterial road (Jižní spojka), D1 and D11 motorways.

**Features and Services:**

24/7 Access  
Air Conditioning  
Lifts  
Monitoring  
Openable Windows  
Parking  
Parking Ratio  
Reception  
Security  
Suspended Ceiling

Rental and service charges listed without VAT. Lessee pays no commission.

