

## Apartment Three-bedroom (4+kk)

Sold

124 m<sup>2</sup>, Prague 5, Smíchov, Pecháčkova



## Apartment Three-bedroom (4+kk)

Sold

124 m<sup>2</sup>, Prague 5, Smíchov, Pecháčkova

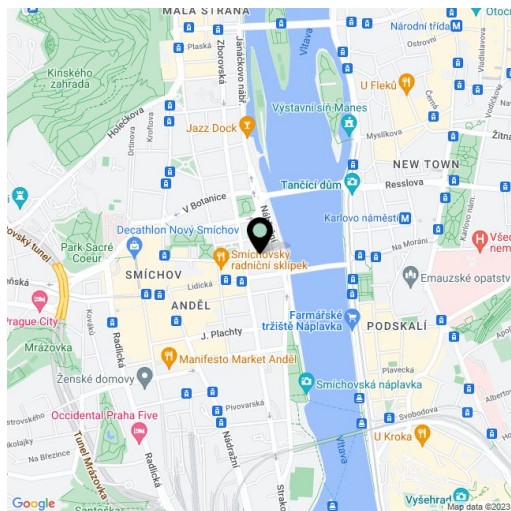
Total area	125 m <sup>2</sup>
Floor area*	124 m <sup>2</sup>
Balcony	1 m <sup>2</sup>
Parking	890 000
Garage	Yes
Cellar	Yes
PENB	G
Reference number	18918

**Bright new apartment with balcony and 2 bathrooms, undergoing along with the whole building a complete renovation, in which emphasis will be placed on preserving original features - just a few steps from the Vltava riverbank, Kinského zahrady gardens and the Nový Smíchov shopping center. Completion date set for October 2015.**

This 2nd floor apartment will be completed using high quality materials, with preparation for a kitchen. The layout will offer a central hall with separate toilet and utility room, 3 bedrooms (one with en-suite bathroom, another with balcony), an open-plan living room with space for kitchen corner and dining room, and main bathroom. **The purchase price includes a garage parking space and a cellar.**

The location offers all amenities, tram and metro B within walking distance. Nearby you will find numerous cafes and restaurants, the BestFit Studio Smíchov fitness center, and a park at 14. října square.

Interior 124.03 m<sup>2</sup>, balcony 1.80 m<sup>2</sup>.



\* Area of the unit according to the Civil Code. The area consists of the sum total area of the entire unit bounded by perimeter walls.

# Apartment Three-bedroom (4+kk)

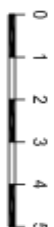
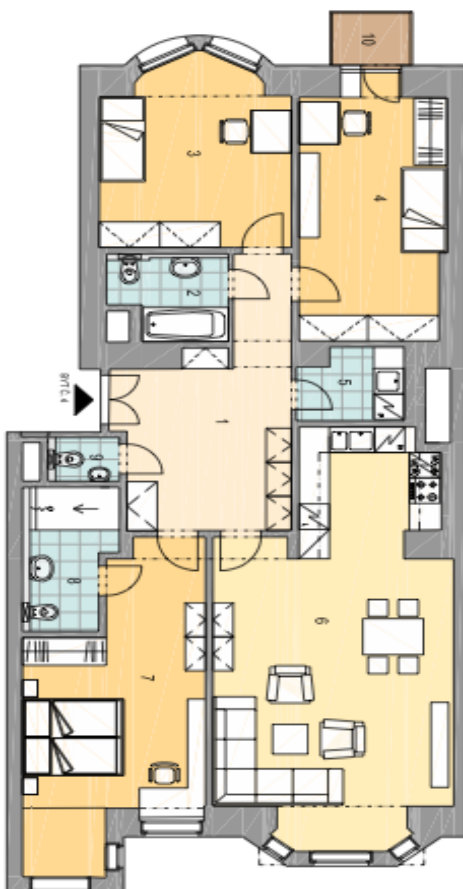
Sold

124 m<sup>2</sup>, Prague 5, Smíchov, Pecháčkova

**3.NP**  
**BYT Č. 4 / 4+KK**  
**124,03 m<sup>2</sup>**

01	CHODBA	16,48
02	WC	4,38
03	POKOJ	15,56
04	POKOJ	16,47
05	PRÁDELNA	3,38
06	OBÝV. POKOJ+KUCH.	39,18
07	POKOJ	21,89
08	KOUPELNA	5,24
09	WC	1,45
CELKOVÁ PLOCHA BYTU		124,03

## DISPOZICE BYTU



## POLOHA BYTU V DOMĚ

PŮDORYS 3.NP



POHLED ULIČNÍ



POHLED DVORNÍ

