

Apartment Two-bedroom (3+kk)

Sold

121 m², Prague 5, Smíchov, Pecháčkova



Apartment Two-bedroom (3+kk)

Sold

121 m², Prague 5, Smíchov, Pecháčkova

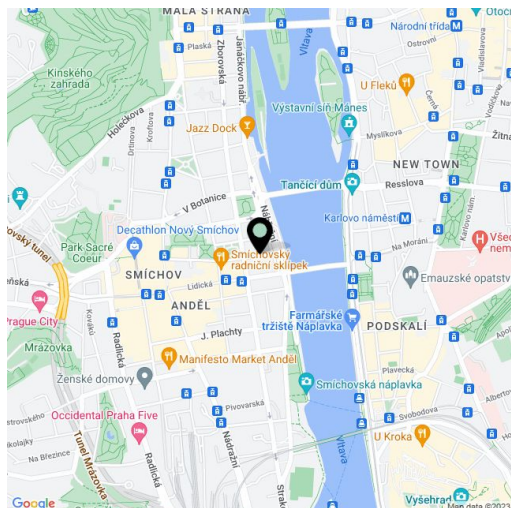
Total area	122 m ²
Floor area*	121 m ²
Balcony	1 m ²
Parking	890 000
Garage	Yes
Cellar	Yes
PENB	G
Reference number	18917

Bright new apartment with balcony and 2 bathrooms, undergoing along with the whole building a complete renovation, in which emphasis will be placed on preserving original features - just a few steps from the Vltava riverbank, Kinského zahrady gardens and the Novy Smichov shopping center. Completion date set for October 2015.

This 2nd floor apartment will be completed using high quality materials, with preparation for a kitchen. The layout will offer a central hall with space for built-in wardrobes, separate toilet and utility room, an open-plan living room with space for kitchen corner and dining room, 2 bedrooms (one with en-suite bathroom, another with balcony) and a master bathroom. **The purchase price includes a garage parking space and a cellar.**

The location offers all amenities, tram and metro B within walking distance. Nearby you will find numerous cafes and restaurants, the BestFit Studio Smíchov fitness center, and a park at 14. října square.

Interior 120.44 m², balcony 1.8 m².



* Area of the unit according to the Civil Code. The area consists of the sum total area of the entire unit bounded by perimeter walls.

Apartment Two-bedroom (3+kk)

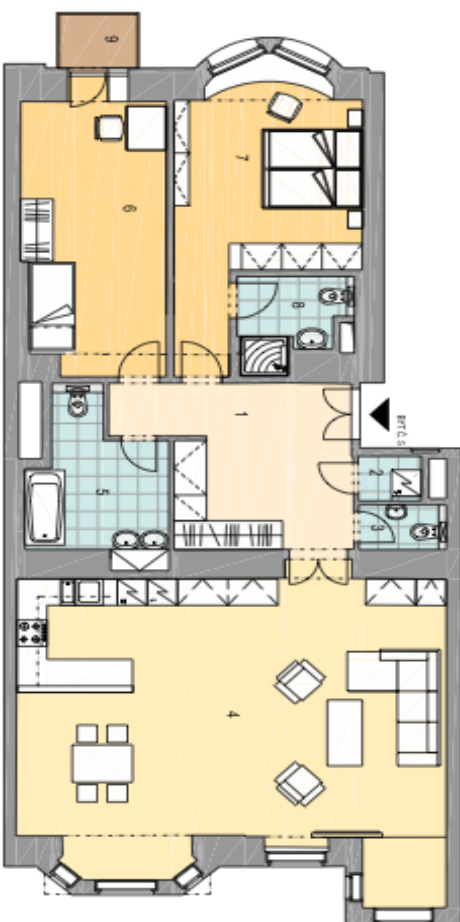
121 m², Prague 5, Smíchov, Pecháčkova

Sold

3.NP BYT Č. 5 / 3+KK 120,44 m²

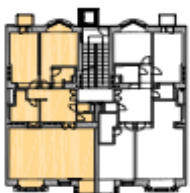
01	CHODBA	14,93
02	PRÁDELNA	1,27
03	WC	1,76
04	OBÝV. POKOJ+KUCH.	53,39
05	KOUPELNA	8,45
06	POKOJ	17,40
07	POKOJ	19,17
08	KOUPELNA	4,07
CELKOVÁ PLOCHA BYTU		120,44
09	BALKON	1,80

DISPOZICE BYTU



POLOHA BYTU V DOMĚ

PŮDORYS 3.NP



POHLED ULIČNÍ



POHLED DVORNÍ

