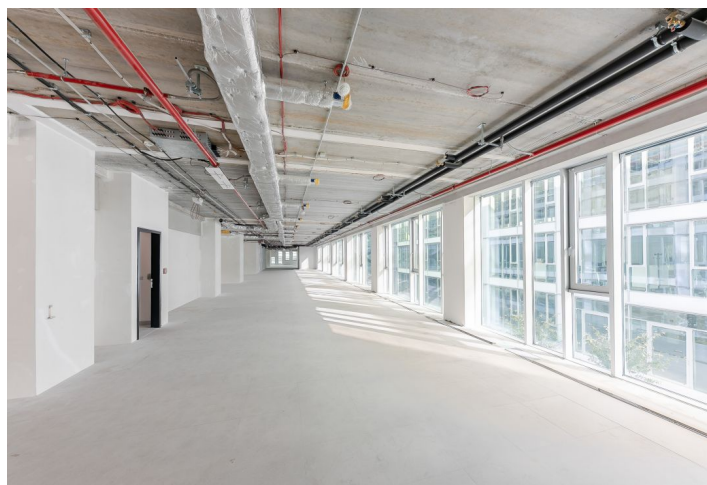


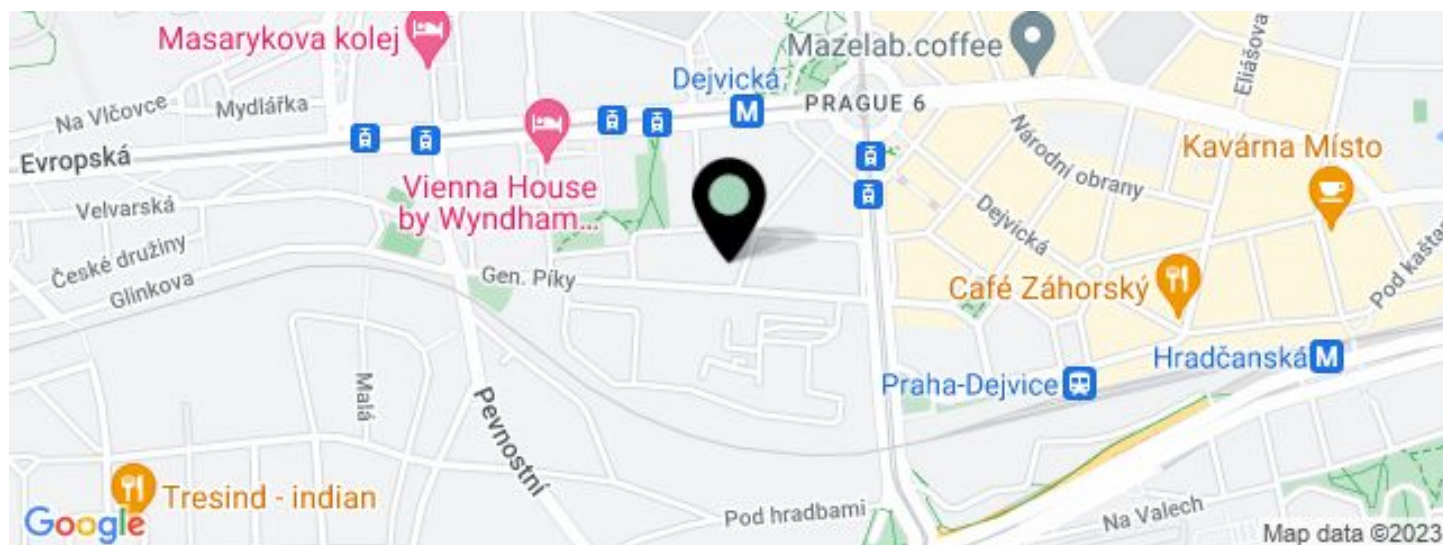
Office building

€ 17.50 / m² | CZK 437 / m²

3 013 m², Prague 6, Dejvice, Generála Píky



Office building

€ 17.50 / m² | CZK 437 / m²3 013 m², Prague 6, Dejvice, Generála Píky

UNIT	AVAILABLE AREA	SERVICES	PARKING	MONTHLY RENT
Office space, 2nd floor	380 m ²	95 CZK monthly per m ²	EUR 110 / pp / month	€ 17.50 / m ²
Office space, 2nd floor	1264 m ²	95 CZK monthly per m ²	EUR 110 / pp / month	€ 17.50 / m ²
Office space, 1st floor + terraces	203 - 681 m ²	95 CZK monthly per m ²	EUR 110 / pp / month	€ 17.50 / m ²
Retail space, -1st floor	763 m ²	95 CZK monthly per m ²	EUR 110 / pp / month	€ 23 - 25 / m ²
Retail space, -1st floor	211 m ²	95 CZK monthly per m ²	EUR 110 / pp / month	€ 23 - 25 / m ²

Office building

€ 17.50 / m² | CZK 437 / m²3 013 m², Prague 6, Dejvice, Generála Píky

Service price	95 CZK monthly per m ²
Total building area	25 300 m ²
Tenant consumption	—
Parking	110 EUR
Parking service charges	—
Parking ratio	—
Certification	—
PENB	A
Reference number	18883

New office building from the Schindler Seko Architects offers quality office and retail space for lease in Dejvice. Building has received international BREEAM certification at the In-Use Very Good level. All civic amenities in the area.

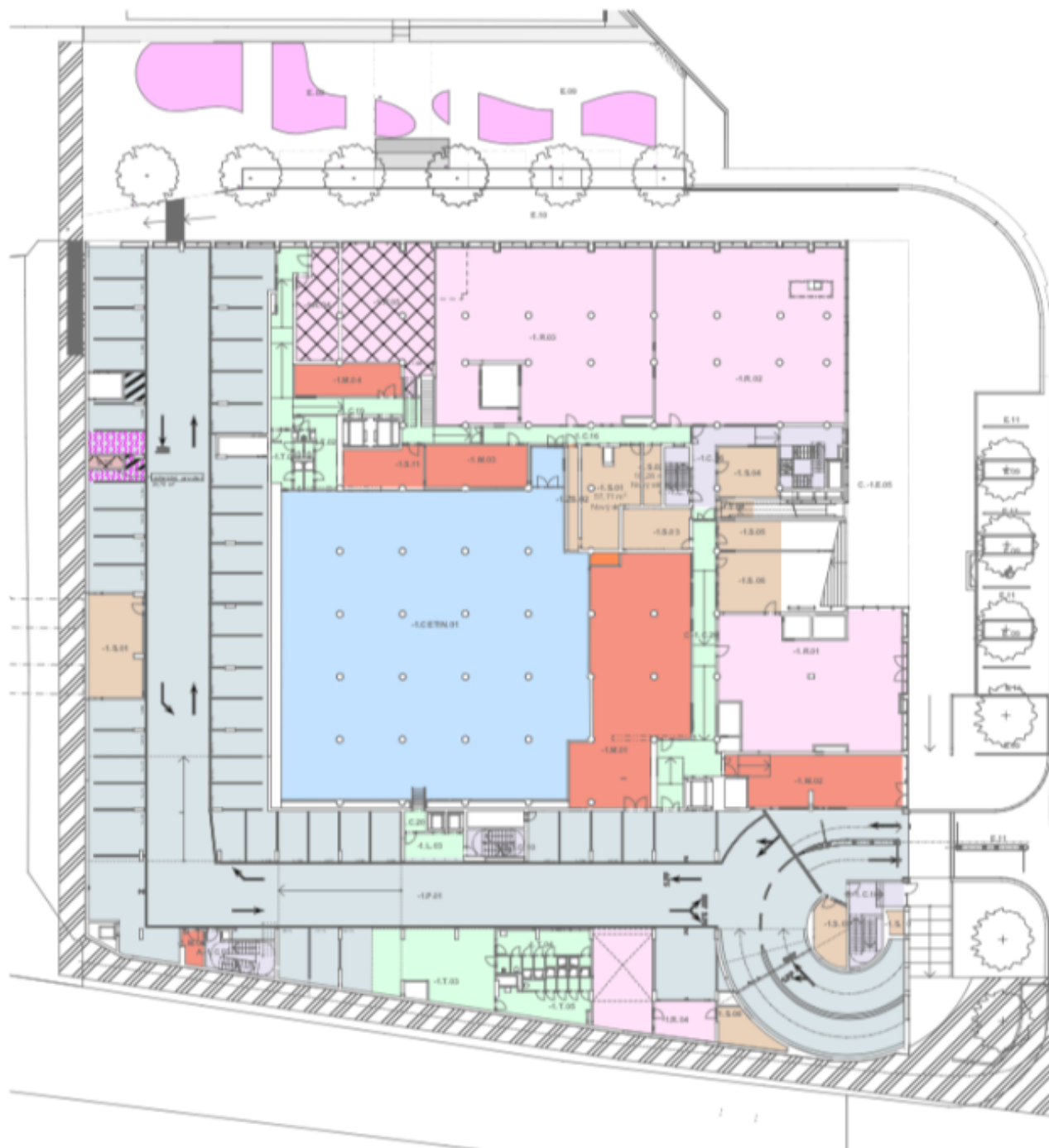
Location:

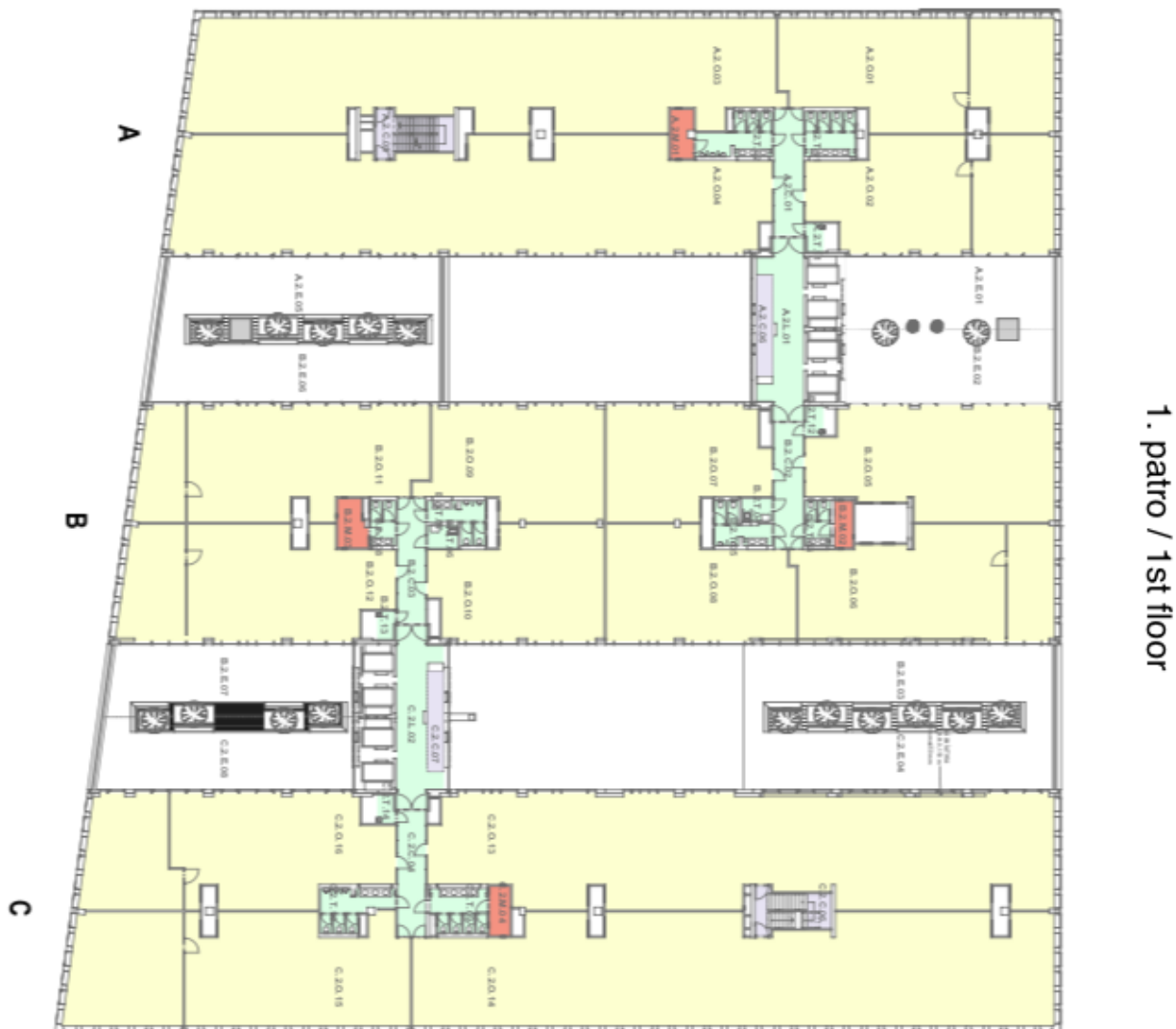
Good access by car and public transport - right next to the tram and bus stop, close to Nádraží Veleslavín metro station (line A). Easy access to the Václav Havel Airport and the city center.

Facilities and services:

Highly flexible layout
Internet connection
Air conditioning
Suspended ceilings with illumination
Openable windows
Central reception with 24h. security and access to the property
Outdoor and garage parking

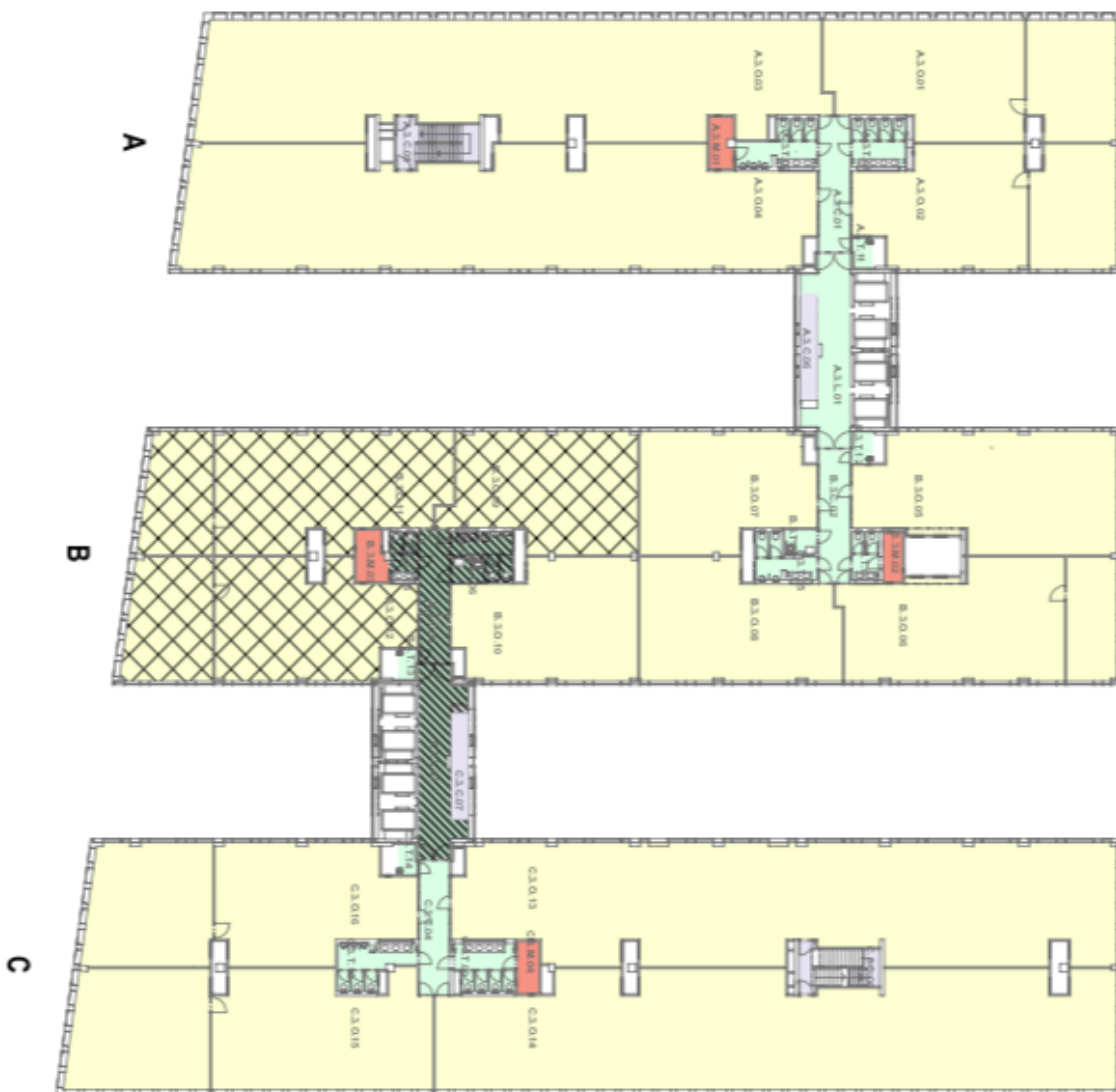
Rental and service charges listed without VAT. Lessee pays no commission.



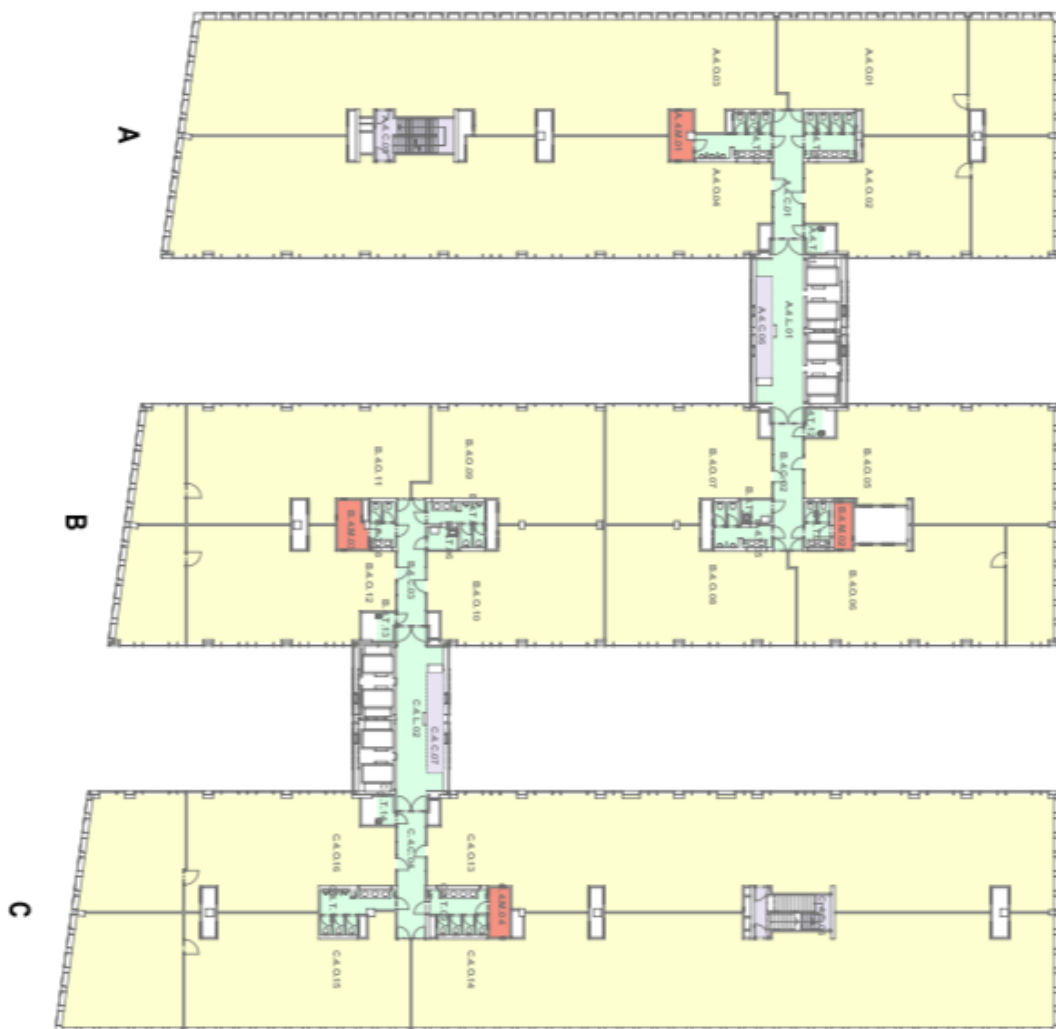


1. patro / 1st floor

2. patro / 2nd floor



3. patro / 3rd floor



4. patro / 4th floor

