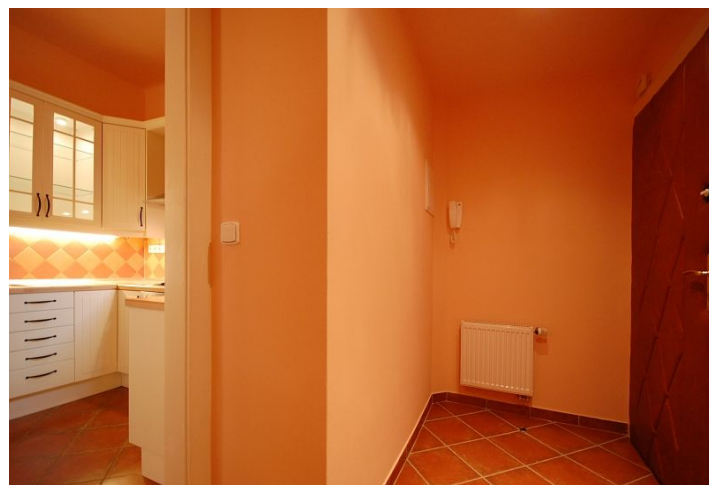


## Apartment One-bedroom (2+kk)

Sold

48 m<sup>2</sup>, Prague 4, Nusle, Pod Lázní



## Apartment One-bedroom (2+kk)

**Sold**

48 m<sup>2</sup>, Prague 4, Nusle, Pod Lázní

Total area	48 m <sup>2</sup>
Parking	-
Cellar	Yes
PENB	G
Reference number	18876

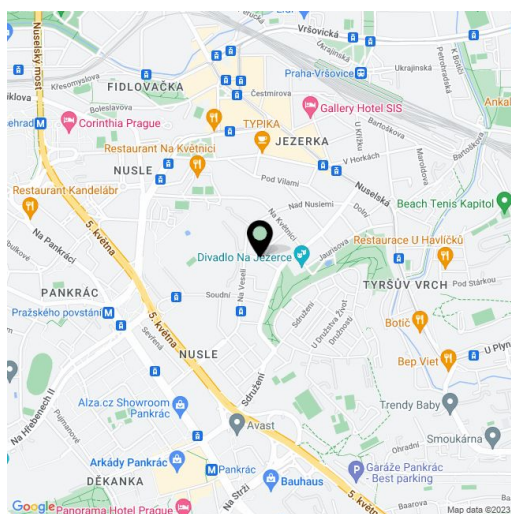
**Renovated one-bedroom apartment on the 2nd floor of a repaired building in Prague 4, in the vicinity of Jezerka Park and a 2 minute walk from bus and tram stops.**

The layout features a living room, 1 bedroom, hall, fully equipped kitchen, bathroom with shower and separate toilet. Facilities include plastic windows, security doors, built-in wardrobe, gas boiler for heating and hot water. **The purchase price includes cellar with security bars**, there is also an opportunity to buy a garage parking space, situated 100 m from the house.

Possible to connect the apartment with the neighboring residential unit.

Location with full amenities and within quick reach of the city. There are nursery, primary and secondary schools in the area, parks, restaurants, shops (5 minutes by bus from the shopping center Arkády Pankrác).

Interior 48,2 m<sup>2</sup>.



\* Area of the unit according to the Civil Code. The area consists of the sum total area of the entire unit bounded by perimeter walls.