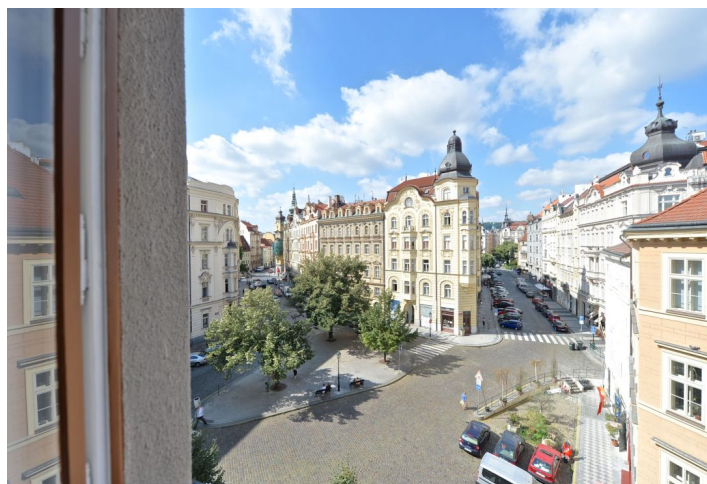




Apartment Three-bedroom (4+kk)

Sold

130 m², Prague 1, Staré Město, U Obecního dvora





Apartment Three-bedroom (4+kk)

Sold130 m², Prague 1, Staré Město, U Obecního dvora

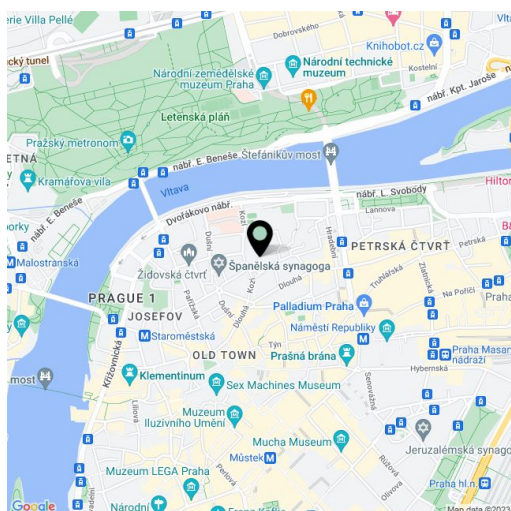
Total area	130 m ²
Parking	-
Cellar	Yes
PENB	G
Reference number	18831

Bright apartment with panoramic views on the 3rd floor of a historic building dating back to 1928, with a newly renovated facade, in a quiet residential area of Prague's Old Town. The flat is offered in the state "white walls", providing its future owner with a unique opportunity to finish the interior according to their own taste.

Developed by an interior design firm, the architectonic project offers a three-bedroom layout - central entrance hall, large living room with kitchen and dining area, 3 bedrooms, 2 bathrooms (one en-suite) and a separate toilet. Except for the main bedroom, which is facing a quiet courtyard, all rooms have a view over the rooftops of the surrounding buildings, landscaped square and onto **Pařížská Street**. Height of ceilings is 3.4 m.

The building, which went through a complete refurbishment of common premises including installation of a glass elevator (barrier free access), is situated in the **heart of the historic center** and is surrounded by cafés, restaurants and luxury shops. Attractive and sought after location offering full amenities; just a 3 minute walk from a tram stop and 5 minutes from the Náměstí Republiky and Staroměstská subway stations.

Interior 129.8 m².



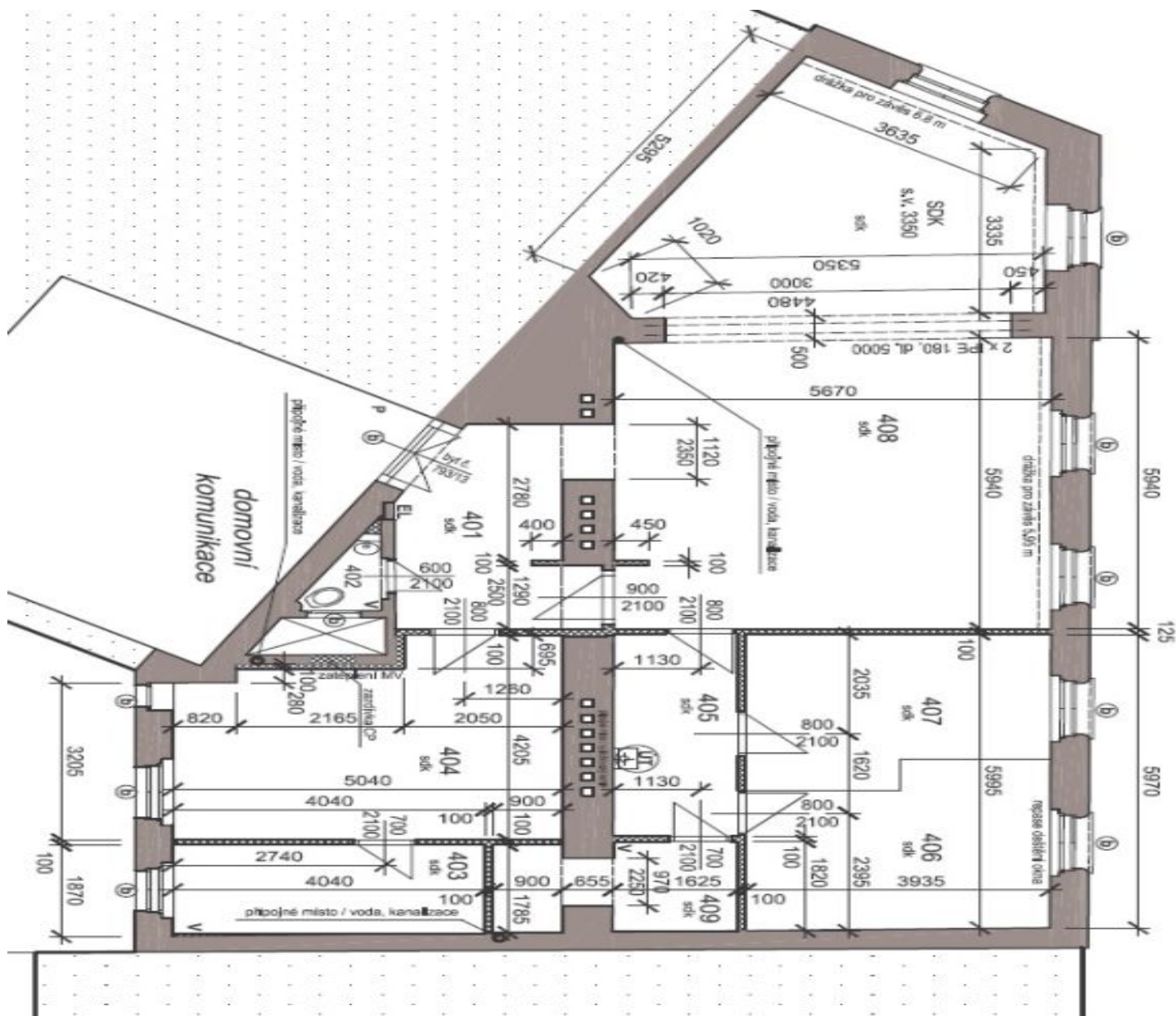
* Area of the unit according to the Civil Code. The area consists of the sum total area of the entire unit bounded by perimeter walls.



Apartment Three-bedroom (4+kk)

Sold

130 m², Prague 1, Staré Město, U Obecního dvora



celkem	129,8 m ²
401 ZÁDVEŘÍ	/keramická dlažba 10,0 m ²
402 WC	/keramická dlažba 1,2 m ²
403 KOUPELNA	/keramická dlažba 7,3 m ²
404 RODIČOVSKÁ LOŽ.	/dřevěná Misy 18,8 m ²
405 ŠATNA, CHODBA	/dřevěná Misy 6,6 m ²
406 POKOJ	/dřevěná Misy 12,3 m ²
407 POKOJ	/dřevěná Misy 11,1 m ²
408 OBYTNÁ ČÁST	/dřevěná Misy 57,3 m ²
409 KOUPELNA	/keramická dlažba 5,2 m ²
celkem	129,8 m²