

## Office space

Rented

Prague 1, Staré Město, Na Příkopě



Prague 1, Staré Město, Na Příkopě

<b>Service price</b>	7 EUR monthly per m <sup>2</sup>
<b>Available area</b>	241 m <sup>2</sup>
<b>Cellar</b>	-
<b>Terrace</b>	43 m <sup>2</sup>
<b>Parking</b>	EUR 180 / ps / month
<b>PENB</b>	D
<b>Reference number</b>	18546

Office space for lease on the top 3rd floor are located in one of the first city constructivist palaces in the functionalist style in the financial and business center of Prague. Significant elements of the building included, for example, the ground floor of the building with shop windows and the entrance to the passage or an advertising sign on the corner.

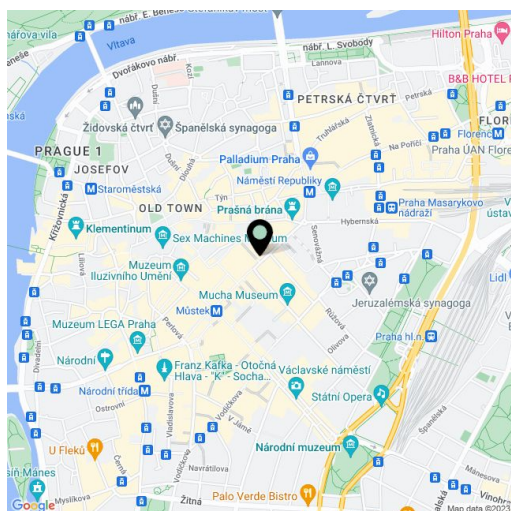
**Location:**

Outstanding accessibility by car and public transportation – within walking distance of the Můstek (lines A, B), Náměstí Republiky (line B) and Muzeum (line C) metro stations, moments from tram stop and close to the city highway with direct connection to the D1 highway. Train stations Masarykovo Nádraží and Hlavní Nádraží less than 5 minutes walking distance.

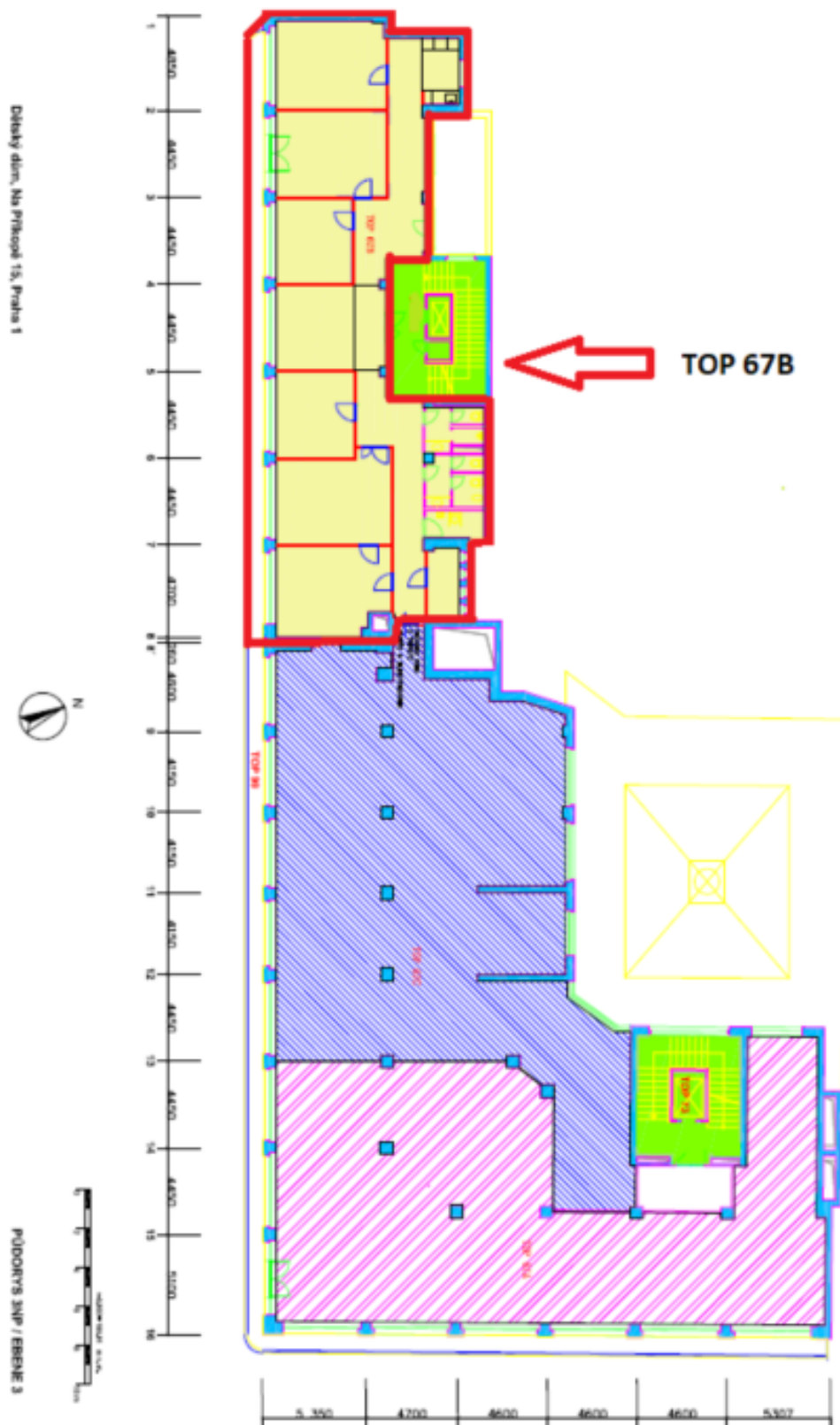
**Features and Services:**

- Floor coverings
- Renovated toilets
- Glass partitions in part of the premises
- Cooling and heating system with individual controls
- Kitchenette with dishwasher
- Openable windows, blinds
- Terrace

Rental and service charges listed without VAT. Lessee pays no commission.



PŮDORYS



## Office space

Rented

Prague 1, Staré Město, Na Příkopě

