

Apartment Two-bedroom (3+1)

Sold

128 m², Prague 1, Nové Město, Navrátilova

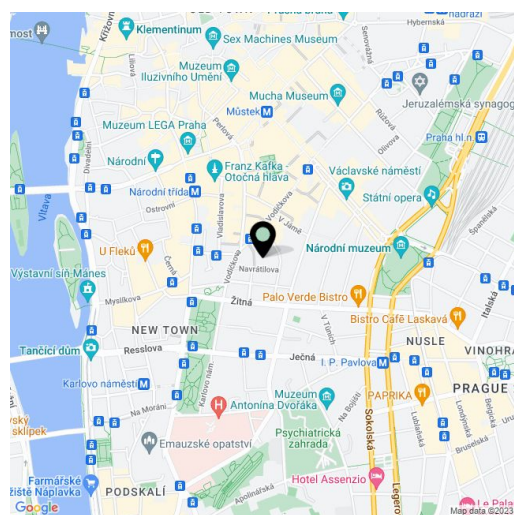


Apartment Two-bedroom (3+1)

Sold

128 m², Prague 1, Nové Město, Navrátilova

Total area	142 m ²
Floor area*	128 m ²
Terrace	14 m ²
Parking	-
Cellar	-
PENB	G
Reference number	18329



Air-conditioned apartment with a large terrace offering beautiful views of Petřín Hill and Hradčany situated on the 6th and 7th floors of a traditional apartment building with a lift, in a quiet street in one of the most attractive locations in the city center. Just a few minutes walk from Wenceslas Square and Charles Square with metro stations and numerous tram connections.

The interior of the lower floor consists of an entrance hall, spacious living room with panoramic views of the city, fully fitted kitchen with integrated appliances, **built-in wine fridge** and access to the terrace. There is also a bathroom with a **whirlpool tub**, shower and utility room, large walk-in closet with built-in wardrobes and a separate toilet. Upstairs we can find 2 spacious and bright bedrooms and a hallway with built-in wardrobes. Amenities include **heated floor tiles** in the bathroom, electric water boiler, roof windows. The apartment is for sale together with all equipment. The entire floor is separated from the other floors of the building (barred entrance by stairs, elevator to the 5th floor using a key), which provides a higher security level.

The apartment is located in a popular central area of Prague's New Town with all amenities, and with an abundance of restaurants and cafes. Excellent accessibility thanks to Charles Square metro station and tram connections.

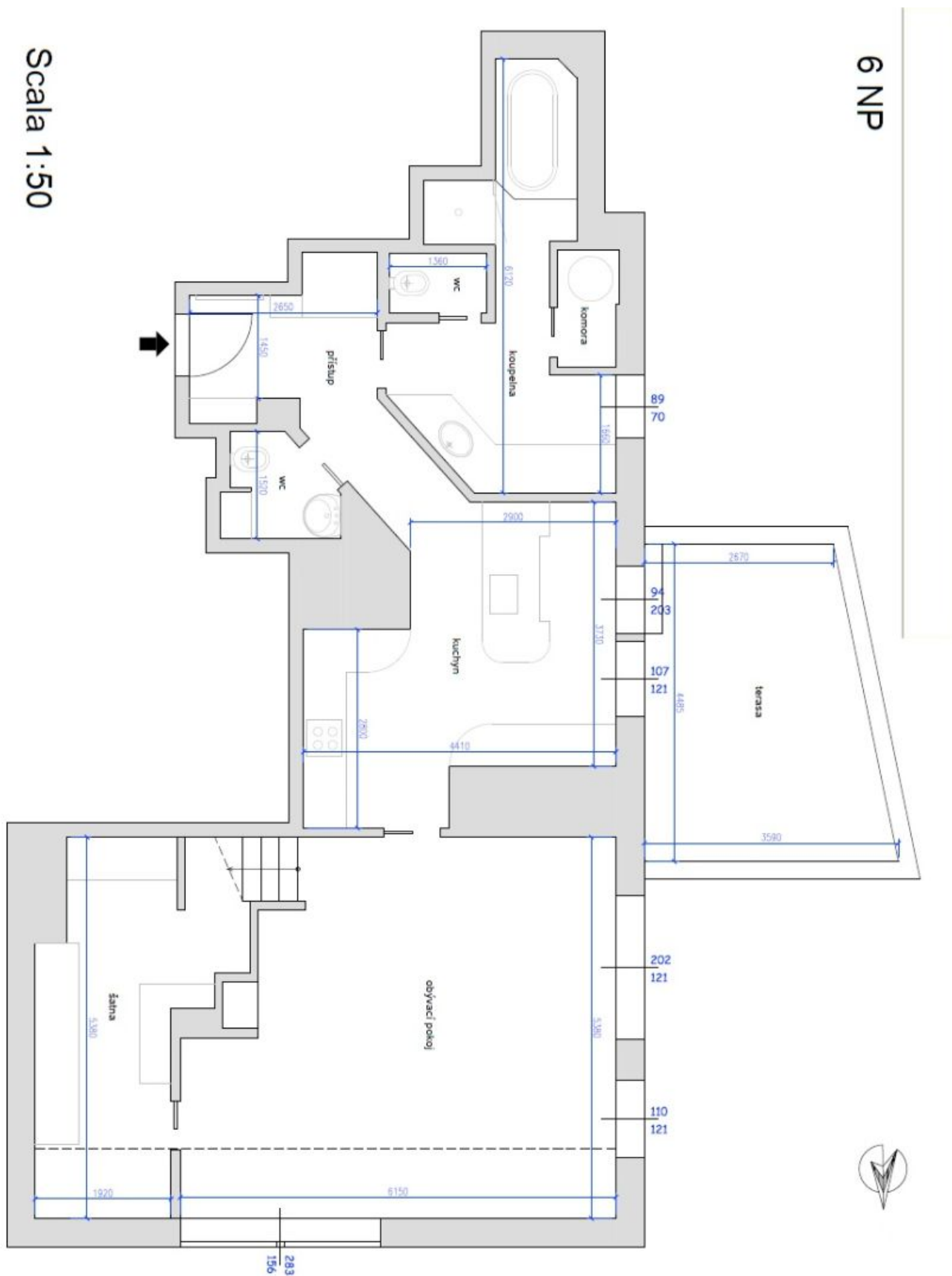
Interior 128 m², terrace 14 m².

* Area of the unit according to the Civil Code. The area consists of the sum total area of the entire unit bounded by perimeter walls.

Apartment Two-bedroom (3+1)

Sold

128 m², Prague 1, Nové Město, Navrátilova



Apartment Two-bedroom (3+1)

Sold

128 m², Prague 1, Nové Město, Navrátilova

7 NP

Scala 1:50

