

Apartment Four-bedroom (5+kk)

Rented

220 m², Prague 6, Liboc, Pelikánova



Apartment Four-bedroom (5+kk)

Rented

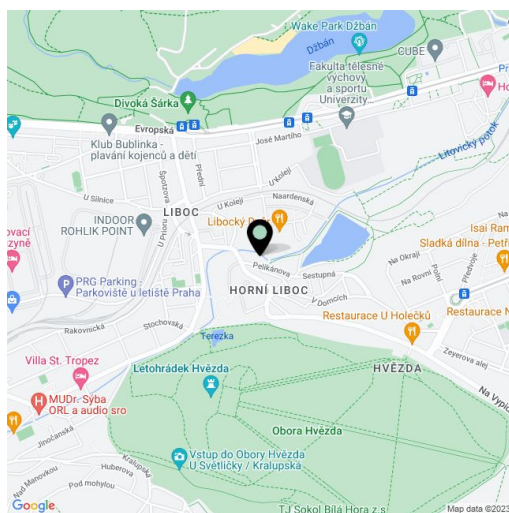
220 m², Prague 6, Liboc, Pelikánova

Total area	220 m ²
Parking	Garage.
Garage	Yes
Cellar	-
PENB	G
Reference number	18248
Available from	Immediately

Unfurnished 4-bedroom 2 bathroom split-level flat on the 1st and 2nd floor in renovated free standing house in a quiet Prague 6 residential neighborhood mere steps from the Liboc pond, and within easy reach of forest parks Hvězda and Divoká Šárka. Convenient to international schools and the airport, bus stop is just a short walk away, and it is about a 15 minute drive to the city center.

On the first floor there is a large living room with a fully fitted open kitchen and terrace, 1 bedroom, shower bathroom, toilet. Second floor includes 3 bedrooms, large hall (gallery) with terrace access, bathroom (massage tub, shower, double sink, bidet), and a separate toilet.

Parquet floors and tiles, roller blinds, dishwasher, washer, dryer, alarm, video entry phone. Garage available. Monthly deposit for utilities CZK 7000. Available from mid of September 2021.



* Area of the unit according to the Civil Code. The area consists of the sum total area of the entire unit bounded by perimeter walls.

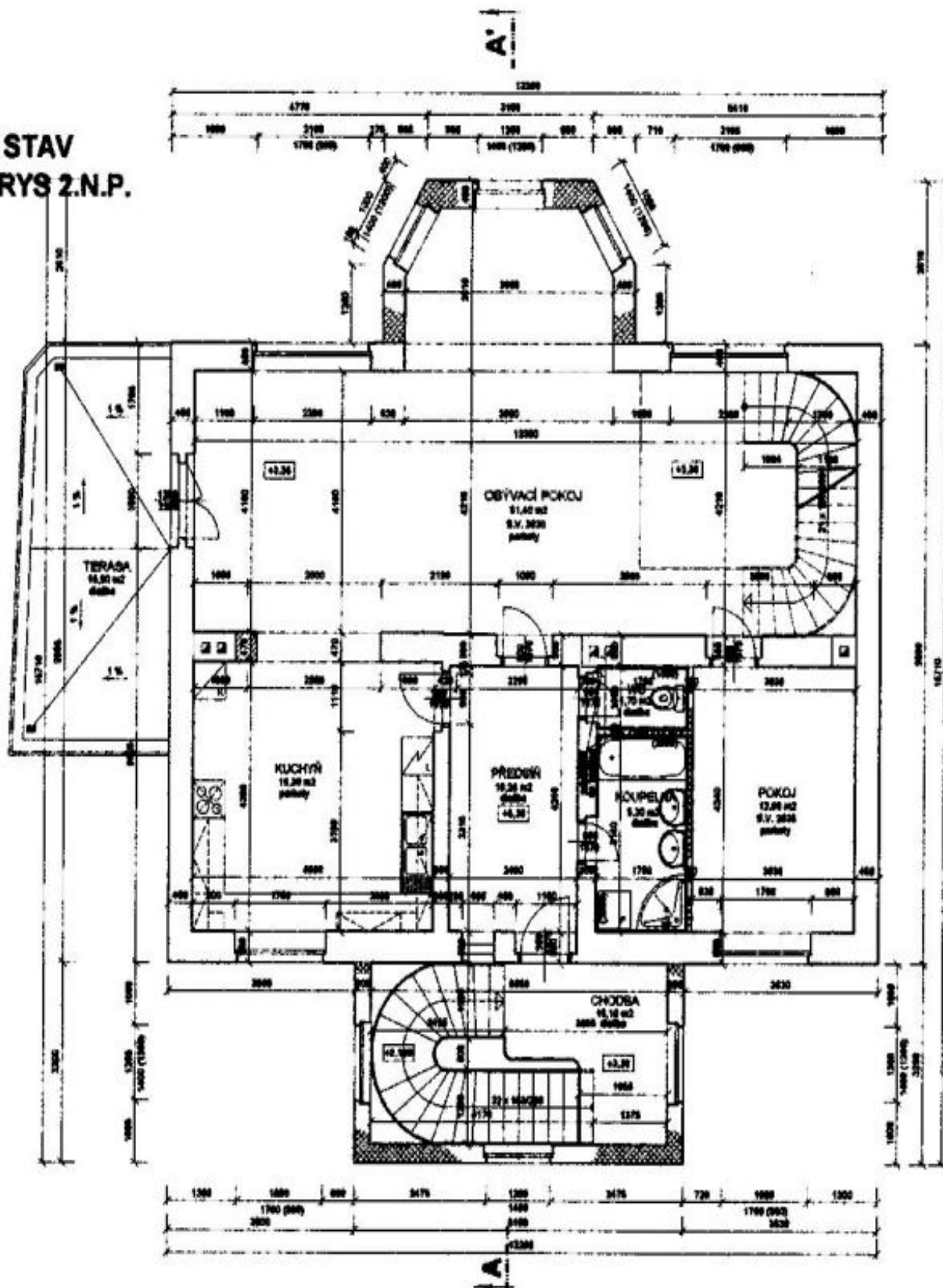
Apartment Four-bedroom (5+kk)

Rented

220 m², Prague 6, Liboc, Pelikánova

NOVÝ STAV PŮDORYS 2.N.P.

M 1 : 50



Apartment Four-bedroom (5+kk)

Rented

220 m², Prague 6, Liboc, Pelikánova

**NOVÝ STAV
PŮDORYS 3.N.P.**
M 1:50

